



State Board for Community and Technical Colleges
 Walla Walla Community College • Conference Center
 Room 185 • 500 Tausick Way
 Walla Walla, WA

Study Session: Wednesday, May 5, 2010
 1:30 p.m. – 5:30 p.m.
 Regular Meeting: Thursday, May 6, 2010
 8:30 a.m. – 11:30 a.m.

May 5 Study Session Agenda

- 1:30 p.m. Call to Order and Welcome**
 Jim Bricker, Chair
- 1:35 p.m. 2011-13 Operating Budget Development and Framework** **Discuss** **Tab 1**
 Chris Reykdal/Denise Graham
- 4:15 p.m. Break**
- 4:25 p.m. Legislative Wrap-Up and Budget Briefing** **Discuss** **Tab 2**
 Chris Reykdal
- 2010-11 Tuition Rates – Denise Graham **[Tab 4]**
 - 2010-11 Operating Budget Allocations – Denise Graham **[Tab 5]**
 - 2010-11 Capital Budget Allocations – Wayne Doty **[Tab 6]**
- 5:30 p.m. Adjournment**
- 5:45 p.m. Reception/Dinner**
Walla Walla Community College, Center for Enology and Viticulture

May 6 Regular Business Meeting Agenda

- 8:00 a.m. Continental Breakfast**
- 8:30 a.m. Call to Order and Adoption of Agenda** **Action**
 Jim Bricker, Chair
- 8:35 a.m. Approval of Consent Agenda** **Action** **Tab 3**
- a. SBCTC Meeting Minutes, February 4, 2010
 - b. 2010-11 State Board Meeting Schedule
 - Resolution 10-05-11**
 - c. South Puget Sound CC Deed Restriction
 - Resolution 10-05-12**
 - d. Centralia College Property Acquisitions
 - Resolution 10-05-13**
 - e. Highline CC Renovation Project
 - Resolution 10-05-14**
 - f. Everett CC Boundary Line Adjustment
 - Resolution 10-05-15**
 - g. Everett CC Addition and Renovation Project
 - Resolution 10-05-16**
- 8:40 a.m. Host College Presentation: Walla Walla Community College** **Discuss**
 President Steve VanAusdle
- 9:10 a.m. Executive Director's Report** **Discuss**
 Charlie Earl

9:40 a.m.	2010-11 Tuition Rates Resolution 10-05-17 Chris Reykdal/Denise Graham	Action	Tab 4
10:00 a.m.	2010-2011 Operating Budget Allocations Resolution 10-05-18 Denise Graham	Action	Tab 5
10:20 a.m.	Break		
10:30 a.m.	2010-11 Capital Budget Allocations Resolution 10-05-19 Wayne Doty	Action	Tab 6
10:50 a.m.	Chair's Report Jim Bricker, Chair <ul style="list-style-type: none">• Nominating Committee Appointment for Election of State Board Officers• Executive Director Evaluation Process Update• April 29 Mission Study Implementation Summit• Student Voice Task Force• Trustees' Association Report Debra Lisser, TACTC President• Presidents' Association Report Pamela Transue, WACTC President• State Board "Parking Lot" Update/New Items Charlie Earl, SBCTC Executive Director	Discuss	
11:20 a.m.	Board Member Notes	Discuss	
11:30 a.m.	Adjournment Next Meeting: June 16-17, 2010 ~ Peninsula College, Port Angeles		

4-28-10

EXECUTIVE SESSION: Under RCW 42.30.110, an Executive Session may be held. Action from the Executive Session may be taken, if necessary, as a result of items discussed in the Executive Session.

PLEASE NOTE: Times above are estimates only. The Board reserves the right to alter the order of the agenda. Reasonable accommodations will be made for persons with disabilities if requests are made at least seven days in advance. Efforts will be made to accommodate late requests. Please contact the Executive Director's Office at (360) 704-4309.

Jim Bricker, Chair • Sharon Fairchild, Vice Chair
Jim Garrison • Shaunta Hyde • Jeff Johnson
Tom Koeninger • Erin Munding • Beth Willis • Elizabeth Chen
Charles N. Earl, Executive Director • DelRae Oderman, Executive Assistant
(360) 704-4400 • FAX (360) 704-4415 • www.sbctc.edu
1300 Quince Street SE • PO Box 42495 • Olympia, WA 98504-2495



STUDY SESSION AGENDA ITEM

May 5, 2010

TAB 1

Topic

2011-13 Operating Budget Development and Framework

Description

Representatives from the presidents, local trustees, faculty, and students will meet with the Board to continue the discussion on the development of the 2011-13 operating budget request for the community and technical colleges.

Key Questions

- What items should be included in the 2011-03 operating budget request?

Analysis

Discussions on the development of the 2011-13 budget over the last few months have focused on identifying the goals, values and principles that should inform the budget request. At this meeting, the discussion will begin to focus on the content of the budget request: What should the budget request include that would best reflect the goals, values and principles of the system for the 2011-13 biennium and beyond?

Over \$100 million per year in state funding has been cut from the community and technical college budget over three years. At the same time, full-time equivalent student (FTES) enrollment increased from 137,000 in FY 2008 to a projected 161,500 this year and next year (FY 2010 and FY 2011). Enrollment is 16% over the 139,000 enrollment target set by the Legislature. As unemployment begins to decline next biennium, enrollments are projected to fall to about 151,150, still well above the current legislative target.

Although increases in tuition revenues have mitigated the impacts of the budget cuts, the decline in funding per student has been significant: Total funding per student FTES has declined by almost 19% from FY 2008 to FY 2011 (based on actual enrollments and adjusted for inflation). If no additional funding is received next biennium, the total funding per student will be 13% below FY 2008 levels.

Colleges have been serving more students with less, and they have done that by reducing staff, cutting programs, decreasing services to students, and increasing class sizes. The resulting strain on students, staff, and facilities cannot be sustained without deterioration in the quality of education provided on our campuses.

The 2011-13 budget process provides an opportunity to request additional funding to restore funding and service levels across the community and technical college system. At the same time, the state budget outlook for next biennium remains bleak: Very early and unofficial projections estimate a new budget shortfall ranging from \$2 billion to \$5 billion. The demands on scarce resources will be intense.

The 2009-11 budget request for the community and technical college system totaled almost \$300 million. (See Attachment A.) Of that amount, \$105 million, about 35%, was for enrollments, another \$105 million was for faculty and staff compensation adjustments consistent with the recommendations of the 2007-08 compensation taskforce. The Legislature did not fund any of the requested items, although they did provide one-time new funding for Worker Retraining enrollments (\$17.6 million). The 2010 Mission Study identified many of the same needs as were expressed in the 2009-11 budget request (See Attachment B.)

The discussion will focus on identifying the items to include in the 2011-13 budget request.

Background Information

Attachment A: 2009-11 SBCTC Operating Budget Request Items

Attachment B: Budget Items identified in the Mission Study Implementation Plan

March 2010 Agenda Item: http://www.sbctc.ctc.edu/general/admin/Tab_1_2011-13_Operating_Budget_Development_and_Framework.pdf

February 2010 Agenda Item:

http://www.sbctc.ctc.edu/general/admin/Tab_3_2011to13_Operating_Budget_Development_Framework.pdf

Outcomes

A preliminary list of items to be included in the 2011-13 system budget request will be identified.

Prepared by: Denise Graham, 360-704-4350, dgraham@sbctc.edu

2009-11 SBCTC Operating Budget Request Items
 (\$s in Thousands--State Dollars Only. Excludes Tuition)

Workforce and Economic Demand		<u>\$105,032</u>
1	High Demand Enrollments	25,400
2	ABE Growth Enrollments	22,700
3	General Growth Enrollments	14,400
4	Applied Bac Enrollments	2,532
5	Increased Adult Basic Education Funding Per Student	20,000
6	Increase Worker Retraining Financial Aid	16,000
7	Incumbent Worker Training	4,000
Student Achievement		<u>\$80,844</u>
8	Opportunity Grants - Allow ABE and Increase Funding	15,000
9	Fund the Student Achievement Initiative	7,000
10	Affordable Tuition	8,024
11	Expand Funding for Child Care Centers	3,000
12	Disabilities Accommodation Funding	2,000
13	Transitions Math Project Continuation	1,000
14	Running Start Increased Funding	15,000
15	21st Century Learning Environments	<u>29,820</u>
	a. Instructional Equipment	11,300
	b. Technology for Student Achievement	18,520
Recruit and Retain the Best People		<u>\$107,800</u>
16	Recruit and Retain the Best People	99,700
17	Part-Time Faculty Conversions	5,100
18	Staff Development - Cultural Competency & Technology	3,000
Campus Climate and Infrastructure		<u>\$3,000</u>
19	Campus Security	3,000
Total Policy Level Request		<u>\$296,676</u>

Budget Request Items Identified in the Mission Study

1. Serve More People: Grow capacity
2. Close Skills gap for technically trained workers:
 - a. Expand capacity in workforce programs
 - b. Expand high demand and IBEST through targeted funds
3. Increase funding for ABE
4. Strengthen role in bachelor's degrees
 - a. Expand university center partnerships
 - b. Grow capacity for applied bachelor's degrees
5. Use performance measures and funding to increase student achievement - Build rewards for Student Achievement
6. Invest in Faculty and Staff - Pursue compensation study recommendations



STUDY SESSION AGENDA ITEM

May 5, 2010

TAB 2

Topic

Legislative Wrap-Up and Budget Briefing

Description

The 2010 special legislative session came to a close on April 12, 2010, following agreement on a \$31 billion supplemental budget. The budget includes tax increases and budget cuts to close a \$2.8 billion budget shortfall. The overall budget relies on nearly \$800 million in new revenue. Taxes are added to items like candy, gum, bottled water and certain services. In addition, it includes \$618 million in additional federal funds. To balance the budget, a total of \$755 million was cut across state agencies, including higher education, and nearly \$700 million was identified through one-time budget savings, fund transfers and use of reserves. The final budget assumes an ending balance of nearly \$500 million to cover any emergencies or any further downturns in the economy.

The Community and Technical College System's budget includes:

Operating Budget (Attachment A)

- A total of \$44.8 million in cuts to the system, with \$7 million of that amount described as "temporary layoffs" (furloughs).
- A one-time increase of \$17.6 million for the Worker Retraining Program to fund 3,784 more slots in 2011.
- \$1 million in additional funding for Opportunity Grants.
- \$18 million in new state funds to cover higher employee health insurance costs.
- Language in the bill allows colleges to use turnover savings to fund faculty salary increments.
- As proposed last year, the tuition increase is limited to 7 percent.

Additional budget items of interest to colleges

- The State Work Study program is cut by 30 percent. This is achieved by lowering the state's wage subsidy rather than the number of participants. Non-resident students will no longer qualify for the program.
- An Opportunity Express Account is created (E2SHB 2630) and will house the one-time Worker Retraining funding and the ongoing addition to Opportunity Grants mentioned above.

Capital Budget (Attachment B)

- There is an overall \$42 million reduction to the community and technical college system's capital budget, but \$22.8 million of that is shifted to the operating budget to fund maintenance and operations.
- \$4.4 million is added for "minor works," such as roof repairs and HVAC fixes.

- A contingency pool of \$3.3 million is added exclusively for the community and technical college system to address unforeseen problems that may arise due to major project reductions.
- \$6.6 million is added for Cascade Core at Pierce-Ft. Steilacoom and \$6.3 million added for debt service at Green River Community College and Bellingham Technical College.

In addition to enacting the 2010-11 supplemental operating and capital budgets, the Legislature passed several policy bills that will impact the colleges in the future and may require Board action to update existing policies or create new policies. Attachment C includes a summary of policy bills of significant interest to the community and technical college system.

Key Questions

- What are the policy changes adopted by the legislature that will require future Board action?
- Are there specific actions of the Legislature that would cause the Board to alter or amend the System Direction?

Analysis

Policy changes established by the Legislature

The 2010 Legislature passed several policy bills that will affect the CTC system and may require changes to Board policy setting related to workforce training and education programs, system efficiencies, and applied baccalaureate degrees.

Attachment C includes a summary of the bills of significance to the two-year college system that were passed by the Legislature.

2010-11 Tuition Rates (Tab 4)

The State Board has received a delegation of tuition rate increase authority from the Legislature, allowing community college resident lower division student tuition rates to increase, on average, by up to 7 percent for 2010-11. The State Board has statutory authority to set community college nonresident lower division student tuition rates. In addition, the State Board is responsible for setting tuition for upper division students enrolled in the system's applied baccalaureate programs at the same level as the state's regional universities (14 percent increase for the upcoming year). Boards of technical colleges have statutory authority to set tuition and fee rates for each technical college; however, the rate of increase for technical colleges is limited to the percent increase adopted by the State Board for the community colleges.

Tab 4 of this packet will provide more detail on the tuition authority of the Board including a resolution to adopt resident and non-resident tuition for academic year 2010-11.

2010-11 Operating Budget Allocations (Tab 5)

The Governor and Legislature faced a \$9 billion shortfall as they wrote the original 2009-11 budget and an additional \$2.8 billion shortfall as they wrote the 2010 supplemental budget. As part of the solution to the shortfalls, they reduced state funding for community and technical colleges in the original 2009-11 budget by \$82 million (11 percent) per year and in the 2010 supplemental budget by another \$26 million (made up of a \$45 million cut and additional one-time Worker Retraining Program funding of \$17.6 million). The cumulative net change in annual state funding is 14 percent.

Tab 5 of this packet will provide more detail on the operating budget allocations, including a Board resolution to adopt operating allocations for FY 2011 beginning July 1.

2010-11 Capital Budget Allocations (Tab 6)

There is an overall \$42 million reduction to the community and technical college system's capital budget, but \$22.8 million of that is shifted to the operating budget to fund maintenance and operations. \$4.4 million is added for "minor works" and a contingency pool of \$3.3 million is added exclusively for the community and technical college system to address unforeseen problems that may arise due to major project reductions. \$6.6 million is added for Cascade Core at Pierce-Ft. Steilacoom and \$6.3 million added for debt service at Green River Community College and Bellingham Technical College.

Tab 6 of this packet will provide more detail on the capital budget allocations including a Board resolution to adopt capital allocations for the 2009-11 Biennium.

Background Information

Attachment A – Operating Budget Side by Side

Attachment B – Capital Budget Side by Side

Attachment C – Legislative bills of significant interest

March 2010 Legislative Update:

http://www.sbctc.ctc.edu/general/admin/Tab_6_Legislative_Wrap_Up.pdf

February 2010 Legislative Update:

http://www.sbctc.ctc.edu/general/admin/Tab_5_Legislative_Update.pdf

December 2009 Legislative Update:

http://www.sbctc.ctc.edu/general/admin/Tab_3_Legislative_Update_and_Approval_of_2010_Legislative_Policy_Principles.pdf

October 2009 Legislative Session Outlook:

<http://www.sbctc.ctc.edu/general/admin/October2009CompleteAgendaPacket.pdf>

Outcomes

The State Board will be briefed on legislative actions that set the framework for Board decision making on:

- Policy changes (this and future meetings);
- Operating budget allocations (this meeting);
- Capital budget allocations (this meeting);
- Tuition rate changes (this meeting)

Prepared by: Chris Reykdal, 360-704-4390, creykdal@sbctc.edu

**SBCTC 2009-11 Biennium Operating Budget
2010 Supplemental Budget Proposals
\$s in Thousands**

2010 Supplemental Budget Proposals									
	Senate			House			Conference Budget		
	FY 2010	FY 2011	Total	FY 2010	FY 2011	Total	FY 2010	FY 2011	Total
Original 2009-11 Appropriations	\$684,829	\$690,050	\$1,374,879	\$684,829	\$690,050	\$1,374,879	\$684,829	\$690,050	\$1,374,879
2010 Supplemental Proposed Changes									
Budget Reduction	-	(36,616)	(36,616)	-	(20,703)	(20,703)	-	(37,746)	(37,746)
SB 6503 (Furloughs & Other Comp Savings)	(708)	(8,499)	(9,207)	(505)	(6,060)	(6,565)	-	(7,054)	(7,054)
Total Reduction	(708)	(45,115)	(45,823)	(505)	(26,763)	(27,268)	-	(44,800)	(44,800)
1 Facilities-Related Expenditures		11	11	296	513	809	296	513	809
2 Additional Worker Retraining Slots	-	27,834	27,834	-	1,039	1,039	-	17,556	17,556
3 Opportunity Grants					1,000	1,000		1,000	1,000
4 BS in Nursing/University Center	-	-	-	-	210	210	-	158	158
5 Transfer Labor Ed and Research Center	-	-	-	-	164	164	-	164	164
6 Aerospace Training and Research Center	-	-	-	-	2,000	2,000	-	1,750	1,750
Total Non-Compensation Changes	(708)	(17,270)	(17,978)	(209)	(21,837)	(22,046)	296	(23,659)	(23,363)
Compensation-Related Changes									
7 Pension Adj and Health Ins Rate Increase	37	5,939	5,976	37	37	74	37	17,961	17,998
Total Proposed Appropriations	\$684,158	\$678,719	\$1,362,877	\$684,657	\$668,250	\$1,352,907	\$685,162	\$684,352	\$1,369,514
Analysis Proposed Additional Budget Reductions Net of Tuition Increases									
	Senate		House		House				
	FY 2010	FY 2011	FY 2010	FY 2011	FY 2010	FY 2011			
2009-11 Maintenance Level (Before Cuts)	766,454	767,276	766,454	767,276	766,454	767,276			
Budget Reduction in Original 2009-11 Budget	(82,425)	(82,425)	(82,425)	(82,425)	(82,425)	(82,425)			
Additional 2010 Supp Budget Reductions	(708)	(45,115)	(505)	(27,763)	(505)	(27,763)	-	(45,800)	-
New Worker Retraining Funding	-	27,834	-	1,039	-	1,039	-	17,556	-
Net impact prior to tuition	(83,133)	(99,706)	(82,930)	(109,149)	(82,930)	(109,149)	(82,425)	(110,669)	(82,425)
Tuition Increase of 7% each year	18,500	37,000	18,500	37,000	18,500	37,000	18,500	37,000	18,500
Net after tuition increases	(64,633)	(62,706)	(64,430)	(72,149)	(64,430)	(72,149)	(63,925)	(73,669)	(63,925)
% change from ML, prior to tuition	-11%	-13%	-11%	-14%	-11%	-14%	-11%	-14%	-11%
% change from ML, after tuition increase	-8%	-8%	-8%	-9%	-8%	-9%	-8%	-10%	-8%

Notes on Conference Budget:

- Facilities-Related Expenditures:** Funds SBCTC request for M&O on North Seattle Employment Resource Center and Green River Kent Station II, and property insurance for Green River Humanities Building.
- Additional Worker Retraining Slots:** 3,784 additional Worker Retraining enrollments at current funding rate (\$4,639) for FY 2011.
- Opportunity Grants:** An additional \$1 million for Opportunity Grants for FY2011.
- BS in Nursing/University Center:** Funding is provided to implement House Bill 2694 (bachelor of science in nursing program at the university center). The University Center at Everett Community College, in partnership with the University of Washington- Bothell, must offer a bachelor of science in nursing program for 50 students (25 are funded in this appropriation).
- Transfer Labor Edu. & Res. Center** - Transfers the Labor Education and Research Center from The Evergreen State College to South Seattle Community College beginning July 1, 2010.
- Aerospace Training and Research Center:** Provides \$1.75 million to the State Board to contract with the Aerospace Training and Research Center on Paine field in Everett, Washington to support industry-identified training in the aerospace sector.
- Pension Adj and Health Insurance Rate Increase:** Adjusts employer health benefit funding rate to \$850. A small adjustment in the amount appropriated to pay for pensions (\$37K per year).
- M&O Fund Shifts:** Shifts \$11.4 million per year in M&O funding from the Building Fee Account in the Capital Budget to the Operating Budget. The shift is not shown on this spreadsheet because it does not impact districts' available M&O funding.

2010 SUPPLEMENTAL CAPITAL BUDGET
FOR THE COMMUNITY AND TECHNICAL COLLEGE SYSTEM

				Changes to the Enacted Budget *			
College	Budget Name	Type	Number	Senate	House	Conference	Notes
Tacoma Community College	Science Building	Construction	20012687	(918,000)		(918,000)	Uncommitted balance of \$1,669,093.
Clark College	East County Satellite	Construction	20041689	(220,000)	(220,000)	(220,000)	House and Senate estimate of bid savings.
Centralia Community College	Science Building	Construction	20042850			(263,000)	Still checking to see if this was bid savings estimate or formula driven
Green River Community College	Humanities and Classroom Building	COP	20061205	4,044,000	4,044,000	4,044,000	We rounded up the actual to nearest 1,000.
Spokane Falls Community College	Campus Classrooms	Design	20062696		(567,000)	(567,000)	Shift Construction Administration funding to when construction is funded in future
Lake Washington Technical College	Allied Health Building	Construction	20062697	(2,110,000)	(1,216,000)	(2,110,000)	Recast budget = -\$627,000
Clover Park Technical College	Allied Health Care Facility	Design	20062699		(697,000)	(697,000)	Shift Construction Administration funding to when construction is funded in future
North Seattle Community College	Employment Resource Center	Construction	20062851	(805,000)	(805,000)	(805,000)	\$3.481M was transferred from 20081220. This is the legislative reduction after the swap
System Wide	Minor Works - Facility Preservation - Roof Repairs	Minor	20081010	0		0	Swap 253 for 057
Seattle Central Community College	Wood Construction Center	Construction	20081216	(4,885,000)	(3,370,000)	(4,885,000)	Recast budget with no new = -\$3,370,000
Peninsula College	Business and Humanities Center	Construction	20081218	(3,983,000)	(3,380,000)	(3,983,000)	SBCTC estimate = -\$3,380,000
Spokane Falls Community College	Chemistry and Life Science Building	Construction	20081219	(6,793,000)	(6,793,000)	(6,793,000)	Reduced by extra FF&E and bid savings.
Spokane Community College	Technical Education Building	Construction	20081220	(8,256,000)	(3,320,000)	(3,200,000)	\$3.481M was transferred to 20062851. This is the legislative reduction after the swap
Everett Community College	Index Hall Replacement	Design	20081221		(144,000)	(144,000)	Shift Construction Administration funding to when construction is funded in future
Green River Community College	Trades and Industry Building	Design	20081222		(918,000)	(918,000)	Shift Construction Administration funding to when construction is funded in future
Bellingham Technical College	Instructional Resource Center	COP	20081223	2,438,000	2,438,000	2,288,000	Less conservative interest estimate. NTE reduced to \$27M
Skagit Valley College	Academic and Student Services Building	Design	20081224		(386,000)	(386,000)	Shift Construction Administration funding to when construction is funded in future
Lower Columbia College	Health and Science Building	Design	20081225		(782,000)	(782,000)	Shift Construction Administration funding to when construction is funded in future
Grays Harbor College	Science and Math Building	Design	20081226		(1,291,000)	(1,291,000)	Shift Construction Administration funding to when construction is funded in future
South Puget Sound Community College	Building 22 Renovation	Construction	20081316		(422,000)		No reduction in the conference budget
Spokane Community College	Building 7 Renovation	Construction	20081319	(1,405,000)	(672,000)	(1,405,000)	SBCTC estimate = -672,000
Spokane Falls Community College	Music Building 15 Renovation	Construction	20081320	(3,347,000)	(2,542,000)	(3,347,000)	SBCTC proposed to return \$2.5M in supplemental.
Pierce College Fort Steilacoom	Cascade Core	Construction	20081321	7,704,000	(796,000)	6,599,000	Legislature is funding at \$8.5M request for new less their estimate of bid savings
Bellevue Community College	L Building Emergency Repairs	Construction	20081850	(1,073,000)	(1,073,000)	(1,073,000)	Project complete. Return unspent balance.
Tacoma Community College	Health Careers Center	Design	20082701		(1,135,000)	(1,135,000)	Shift Construction Administration funding to when construction is funded in future
Bellevue Community College	Health Science Building	Design	20082702		(1,440,000)	(1,440,000)	Shift Construction Administration funding to when construction is funded in future
Bates Technical College	Mohler Communications Technology Center	Design	20082703		(563,000)	(563,000)	Shift Construction Administration funding to when construction is funded in future
Clark College	Health and Advanced Technologies Building	Design	20082705		(182,000)	(182,000)	Shift Construction Administration funding to when construction is funded in future
System Wide	Roof Repairs "A"	Minor	30000010	988,000		988,000	Funding our request for \$988,000 but swapping the source of funds
System Wide	Minor Works - Program	Minor	30000078	2,513,000		2,513,000	Funding our request for \$2,513,000 but swapping to 057
Seattle Central Community College	Seattle Maritime Academy	Design	30000120		(1,502,000)	(1,502,000)	Shift Construction Administration funding to when construction is funded in future
Yakima Valley Community College	Palmer Martin Building	Design	30000121		(467,000)	(467,000)	Shift Construction Administration funding to when construction is funded in future
North Seattle Community College	Technology Building Renewal	Design	30000129		(892,000)	(892,000)	Shift Construction Administration funding to when construction is funded in future
Green River Community College	Science Math and Technology Building	Design	30000130		(385,000)	(385,000)	Shift Construction Administration funding to when construction is funded in future
System Wide	Minor Works - Preservation	Minor	30000210	884,000		884,000	Funding our request for \$844,000 but swapping to 057
System Wide	Preventative Facility Maintenance and Building System	M&O	30000287	(22,800,000)		(22,800,000)	Reduction is offset in their Operating budget.
System Wide	Construction Contingency Pool	New	92000007	3,312,000			SBCTC Contingency Pool.

2009-11 Proposed Supplemental Change (34,712,000) (29,478,000) (42,498,000)

Capital Funds:
State Building Construction Account (Fund 057)
Community and Technical Colleges Capital Projects Account (Fund 060)
Education Construction Account (Fund 253)
Gardner-Evans Higher Education Construction Account (Fund 357)

By Type

Minor Work	4,385,000	0	4,385,000
Design	0	(11,351,000)	(11,351,000)
Construction	(26,091,000)	(24,609,000)	(22,403,000)
COP Financing	6,482,000	6,482,000	6,332,000
Matching Funds	0	0	0
Maintenance and Operation	(22,800,000)	0	(22,800,000)
New	3,312,000	0	3,339,000
All Funds	(34,712,000)	(29,478,000)	(42,498,000)

By Fund

General Obligation Bond (057 & 357) Total	(50,153,000)	(35,960,000)	(57,789,000)
Building Fee (060) Total	17,549,000	6,482,000	17,399,000
Lottery Revenue (253) Total	(2,108,000)	0	(2,108,000)
All Funds	(34,712,000)	(29,478,000)	(42,498,000)

* The Senate and House handled the transfer between 20081220 and 20062851 approved on August 4, 2009, differently. Numbers in this table were adjusted to reflect the change since the transfer was completed.

State Board for Community and Technical Colleges Bills of Significance - As of April 27, 2010

Bills that have been signed or delivered to Governor

E2SHB 1418	Kagi	Establishing a statewide dropout reengagement system
EHB 2561	Dunshee	Funding construction of energy cost saving improvements to public facilities
2SHB 2630	Probst	Creating the opportunity express program
ESHB 2921	Linville	Capturing additional savings (“Additional Expenditure Freezes”)
E2SHB 3141	Kagi	Redesigning the delivery of temporary assistance to needy families (“TANF”)
ESHB 3178	Carlyle	Creating efficiencies in the use of technology in state government
SSB 6355	Kilmer	Expanding the higher education system upon proven demand (“CTC Applied BA”)
ESSB 6359	Kilmer	Promoting efficiencies including institutional coordination and partnerships in the community and technical college system (“CTC Efficiencies”)
SSB 6382	Prentice	Reducing the cost of state government operations by restricting compensation (“Salary Freeze”)
SSB 6503	Prentice	Closing state agencies on specified dates (“Furloughs”)



**REGULAR MEETING OF THE STATE BOARD FOR
COMMUNITY AND TECHNICAL COLLEGES**

MEETING MINUTES

March 18, 2010

State Board Members

**Jim Bricker (Chair), Coupeville
Sharon Fairchild (Vice Chair), Spokane
Elizabeth Chen, Federal Way
Jim Garrison, Mt. Vernon
Shaunta Hyde, Lake Forest Park
Jeff Johnson, Olympia
Tom Koenninger, Vancouver
Erin Munding, Omak
Beth Willis, Lakewood**

Statutory Authority: Laws of 1967, Chapter 28B.50 Revised Code of Washington

State of Washington
STATE BOARD FOR COMMUNITY AND TECHNICAL COLLEGES
Olympia

A C T I O N I N D E X
March 18, 2010

<u>Resolution Number</u>	<u>Description</u>	<u>Page in Minutes</u>
	Adoption of Consent Agenda:	1
----	- Approval of State Board Regular Meeting Minutes for February 4, 2010	
10-03-05	- Approval of Whatcom CC Property Acquisition	
10-03-06	- Approval of Yakima Valley CC Property Acquisition	
10-03-07	- Approval of Olympic College Tenant Improvements	
10-03-08	- Approval of Wenatchee Valley College MOU	
10-03-10	- Approval of Bellevue College Property Acquisition	
10-03-09	Approval Student Completion Initiative (Gates) Projects	2

**STATE OF WASHINGTON
STATE BOARD FOR COMMUNITY AND TECHNICAL COLLEGES
Olympia**

**Regular Meeting Minutes
March 18, 2010
State Board Office, Olympia**

The State Board held a study session on March 17, 2010, from 1:30 p.m. to 5:45 p.m. at the Olympia State Board Offices. The Board reviewed and discussed the 2011-13 operating budget development and framework with a panel of system representatives. The Board also participated in an overview of the SBCTC education division programs and initiatives, including I-BEST, Centers of Excellence, Opportunity Grants, High Demand, Transfer Research and Proportionality, Remediation, Workfirst, ABE, and Professional/Technical Programs.

.....

State Board Members Present: Jim Bricker (Chair), Sharon Fairchild (Vice Chair), Shaunta Hyde, Tom Koenninger (via telephone), Jim Garrison, Beth Willis

State Board Members Absent: Erin Munding, Elizabeth Chen, Jeff Johnson

CALL TO ORDER AND WELCOME

Chair Jim Bricker called the meeting to order at 8:30 a.m., welcomed those present, and asked for self-introductions. He recognized Dr. Phil Venditti, FACTC Chair and Clover Park Technical College communications instructor, and his students who came to observe the proceedings.

ADOPTION OF REGULAR MEETING AGENDA

MOTION: Moved by Sharon Fairchild and seconded by Jim Garrison that the State Board adopt its March 18, 2010 regular meeting agenda as presented.

MOTION CARRIED.

ADOPTION OF CONSENT AGENDA (Resolutions 10-03-05, 10-03-06, 10-03-07, 10-03-08, 10-03-10)

Chair Bricker noted the addition of Item 3-f, Resolution 10-02-10 to the consent agenda authorizing a property acquisition by Bellevue College.

MOTION: Moved by Sharon Fairchild and seconded by Shaunta Hyde that the State Board adopt the consent agenda for its March 18, 2010 regular meeting as follows:

- a) Approval of February 4, 2010 State Board regular meeting minutes***
- b) Resolution 10-03-05 (ATTACHMENT #1) Whatcom CC Property Acquisition***
- c) Resolution 10-03-06 (ATTACHMENT #2) Yakima Valley CC Property Acquisition***
- d) Resolution 10-03-07 (ATTACHMENT #3) Olympic College Tenant Improvements***
- e) Resolution 10-03-08 (ATTACHMENT #4) Wenatchee Valley College Memorandum of Understanding***
- f) Resolution 10-03-10 (ATTACHMENT #5) Bellevue College Property Acquisition***

MOTION CARRIED.

EXECUTIVE DIRECTOR'S REPORT

Executive Director Charlie Earl reported on the following items:

- Complete College America
- Washington State Quality Awards
- SBCTC agency audit report for FY08-09
- Mission Study report
- Governor's Job Creation Subcabinet
- 2010 Innovations in State Government award presented to Cable Green, SBCTC
- Higher Education Coordinating Board Executive Director search
- Retirement recognition for Loretta Seppanen, SBCTC Assistant Director for Research and Analysis

APPROVAL OF STUDENT COMPLETION INITIATIVE AWARDS (Resolution 10-03-09)

Jan Yoshiwara, Bill Moore, Tina Bloomer, and Cable Green of the State Board staff described the remaining three student completion initiative grant award projects funded by the Bill and Melinda Gates Foundation: creating an on-line open course library, redesigning pre-college math courses, and expanding the I-BEST model. At its October 2009 meeting, the Board approved the first awards for student achievement.

Staff received 99 applications to participate in the open course library program: 17 applications for seven awards for the pre-college math project and 16 applications for the 10 awards for the I-BEST developmental education project. Applications were reviewed by teams of faculty, college instruction and student services staff, and external content experts. Based on those reviews, staff recommended grant awards to 30 colleges for the three projects.

Awards are for year one (spring 2010 through June 2011) of the three-year grant projects. All three projects will hold kick-off events for grant participants in April and May.

MOTION: Moved by Beth Willis and seconded by Jim Garrison that the State Board adopt Resolution 10-03-09 (ATTACHMENT #6) awarding Gates Foundation grant and state funds for the Year 1 implementation of the Student Completion Initiative as described in the resolution and attachments.

MOTION CARRIED.

2011 OPERATING BUDGET ALLOCATIONS AND TUITION PREVIEW

Chris Reykdal of the State Board staff reported that although the Legislature has not yet adopted the final 2010 Supplemental Operating Budget, both the House and Senate proposals include additional budget reductions for FY 2011. Budget reductions taken in the last two years have been allocated to the districts and State Board office proportionately based on share of state allocated funds. Staff recommends using the same methodology in FY 2011.

Staff summarized FY 2010 allocation and tuition increase methodologies as outlined in the Board's agenda materials. Discussion focused on FY 2011 allocation methodologies, earmarks, and tuition increase scenarios for resident and non-residents students.

The Board will be asked to approve initial operating budget allocations and tuition fee schedules for FY2011 at a special Board meeting tentatively scheduled for early April.

LEGISLATIVE UPDATE AND BUDGET BRIEFING

Chris Reykdal reported that the Legislature adjourned its 60-day session without achieving agreement on a supplemental operating or supplemental capital budget. At the beginning of the session, the Legislature faced a \$2.8 billion budget deficit for the remainder of the 2009-11 biennium. The Governor called a special session which began on March 15. Both budgets will be affected directly by decisions made on revenue. Staff updated the Board on the most current budget developments and high-impact pieces of legislation being considered.

SYSTEM TECHNOLOGY UPDATE: LIFT AND SHIFT PROJECT

Mike Scroggins of the State Board staff reviewed progress to date and plans for system technology improvements. At the September 2009 meeting, the Board approved the Lift and Shift Project to stabilize the current systems to provide the time needed to immediately plan and prepare for the implementation of a commercial Enterprise Resource Planning (ERP) system. ERP systems manage all the information and functions of a college from shared data stores. ERP systems are typically commercial software packages that promote seamless integration of all the information flowing through a college. The Board reviewed a set of guiding principles for the ERP planning project drafted by the WACTC Technology Committee, working with State Board staff and with feedback from the colleges and commissions. The Board discussed the current Lift and Shift Project and the modernization of the college's software systems.

CHAIR'S REPORT

Chair Bricker presented his report:

- **Executive Director's Performance Evaluation.** Sharon Fairchild will head up the process for the Executive Director's performance evaluation. Board members will be kept informed of the process.
- **Student Visitors.** The Board welcomed Clover Park Technical College students Shar Ostrem, Paul Winters, Danielle Perkins, Josh Richardson, and Samantha Green and their communications instructor, Dr. Phil Venditti. The students introduced themselves, described their programs and educational interests, and made brief remarks.
- **Trustees' Association Report.** TACTC President Debbie Lisser's reported on:
 - March 10-12 ACCT Legislative Summit and TACTC's invitation to Washington State Congressional delegates and state legislators to a meeting in late August/early September
 - TACTC student scholarship awards to All Washington Academic Team scholars and funding support for Student Voice Academy, Student Legislative Academy, and Students of Color Conference
 - Recognition of Peter Crane, TACTC's "Voice in Olympia"
 - TACTC Spring Conference scheduled for May 20-21, 2010 in Wenatchee
- **Presidents' Association Report.** WACTC President Pamela Transue reported on:
 - Part-time/full-time student tuition differential
 - February 25-26 WACTC meeting
 - WACTC planning retreat on decision-making processes

- Feasibility of statewide bond issue for capital funding
- Columbia University's study of several model community and technical colleges student programs such as I-BEST and Running Start
- Impact of freezes such as equipment, travel, hiring, and salary on community and technical colleges
- Presidency changes at South Seattle and Seattle Central Community Colleges
- **Parking Lot Items.** An updated list of the State Board's Parking Lot items was presented for review and updates.

ADJOURNMENT/NEXT MEETING

There being no further business, the State Board adjourned its regular meeting of March 18, 2010 at 11:40 a.m. The Board will meet next on May 5-6, 2010 at Walla Walla Community College.

J.A. Bricker, Chair

ATTEST:

Charles N. Earl, Secretary



REGULAR MEETING AGENDA ITEM

TAB 3b

May 6, 2010

Consent Item Action (Resolution 10-05-11)

Topic

Approval of 2010-11 State Board Meeting Dates and Locations

Description

The State Board adopts a schedule of regular meetings each fiscal year for publication in the *Washington State Register*. Meetings are generally held seven to eight times per year on community and technical college campuses at intervals of approximately six to eight weeks. Locations rotate among the 30 college districts, balancing visits to the east and west sides of the state. During legislative sessions, meetings are held in or near Olympia. The two-day meetings include a study session on the first day designed to provide Board members with an in-depth discussion about policy issues, and a regular business meeting on the second day when action items are addressed. The State Board holds its annual retreat in September.

Major Considerations

- Board members reviewed and commented on a preliminary meeting schedule, and the proposed schedule incorporates their feedback.
- The executive director and deputy executive directors reviewed and approved the proposed meeting schedule.
- The proposed meeting schedule is designed to align properly with the Board's policy and budget decision-making processes.
- The meeting dates and locations have been confirmed by the host college presidents.

Analysis

The following schedule of seven State Board regular meetings is proposed for 2010-11:

September 13-15, 2010 (retreat)	State Board Office - Olympia
October 27-28, 2010	Everett Community College
December 1-2, 2010	Bates Technical College
January 19-20, 2011	State Board Office - Olympia
March 16-17, 2011	State Board Office - Olympia
May 11-12, 2011	Highline Community College
June 22-23, 2011	State Board Office - Olympia

Recommendation

It is recommended that the State Board adopt Resolution 10-05-11 approving its schedule of meeting dates and locations for 2010-11 for publication in the *Washington State Register*.

Prepared by: DelRae Oderman, 360-704-4309, doderman@sbctc.edu

STATE OF WASHINGTON
STATE BOARD FOR COMMUNITY AND TECHNICAL COLLEGES
RESOLUTION 10-05-11

A resolution relating to the official state board meeting schedule for 2010-11.

WHEREAS the State Board adopts its meeting schedule for the fiscal year for publication in the *Washington State Register*;

THEREFORE BE IT RESOLVED that the State Board has agreed upon the following meeting dates and locations for 2010-11:

September 13-15, 2010 (retreat)	State Board Office - Olympia
October 27-28, 2010	Everett Community College
December 1-2, 2010	Bates Technical College
January 19-20, 2011	State Board Office - Olympia
March 16-17, 2011	State Board Office - Olympia
May 11-12, 2011	Highline Community College
June 22-23, 2011	State Board Office - Olympia

APPROVED AND ADOPTED on May 6, 2010.

J. A Bricker, Chair

ATTEST:

Charles N. Earl, Secretary



REGULAR MEETING AGENDA ITEM

May 6, 2010

TAB 3c

Consent Item **Action (Resolution 10-05-12)**

Topic

Deed Restriction – South Puget Sound Community College, Hawks Prairie Property

Description

A shared stormwater pond is located on the northwest corner of South Puget Sound Community College's Hawks Prairie Property. The college is nearing approval of the conceptual master plan and the stormwater mitigation permit, but the City of Lacey has put a condition on it, including the deed restriction to the stormwater pond. Deed Restrictions require State Board approval.

Major Considerations

- The college's master plan for the new campus has already taken the restrictions into consideration and they do not impact the current footprint or change the master plan.

Analysis

In developing the shared stormwater pond on the northwest corner of the South Puget Sound Community College's Hawks Prairie property, the City of Lacey required additional area reserved for wetland mitigation and wetland buffers. The City is requiring that the college include restrictions on the property so that no development will occur in the wetland area and it is forever preserved as wetlands.

The college's master plan for the new campus has already taken the restrictions into consideration and they do not impact the current footprint or change the master plan. The deed restriction (Attachment A) needs to be approved and recorded with the County before the City of Lacey will permit the college to begin developing the site. The college's Board of Trustees approved the deed restriction to the stormwater pond for the Hawks Prairie property on April 8, 2010.

Background Information

Attachment A – Deed Restriction

Recommendation

The staff recommends approval of Resolution 10-05-12, approving the deed restriction to the stormwater pond for the South Puget Sound Community College's Hawks Prairie Property.

Prepared by: Wayne Doty, 360-704-4382, wdoty@sbctc.edu

STATE OF WASHINGTON
STATE BOARD FOR COMMUNITY AND TECHNICAL COLLEGES
RESOLUTION 10-05-12

A resolution relating to South Puget Sound Community College, Hawks Prairie Property Deed Restriction

WHEREAS, A shared stormwater pond is located on the northwest corner of South Puget Sound Community College's Hawks Prairie Property, and;

WHEREAS, The City of Lacey is requiring that the college include restrictions on the property so that no development will occur in the wetland area and it is forever preserved as wetlands; and

WHEREAS, The college's master plan for the new campus has already taken the restrictions into consideration and they do not impact the current footprint or change the master plan; and

WHEREAS, The College's Board of Trustees approved the deed restriction to the stormwater pond for the Hawks Prairie property on April 8, 2010.

THEREFORE BE IT RESOLVED that the State Board for Community and Technical Colleges approves the deed restriction to the stormwater pond for the South Puget Sound Community College's Hawks Prairie Property.

APPROVED AND ADOPTED on May 6, 2010.

J.A. Bricker, Chair

ATTEST:

Charles N. Earl, Secretary

RETURN ADDRESS

Raili Mae/Jaylee Homeowners Assoc.
5512 109th Court, Ste 101
Vancouver, WA 98662

Document Title(s)

Deed Restriction

Reference Numbers(s) of related documents

Case Number: 07-83 and NWS-2007-359-SO

Additional Reference #-s on page

Grantor(s) (Last, First and Middle Initial)

Raili Mae/Jaylee Homeowners Assoc.

State of Washington - Board of
Community and Technical Colleges

Additional grantors on page

Grantee(s) (Last, First and Middle Initial)

Raili Mae/Jaylee Homeowners Assoc.

State of Washington - Board of
Community and Technical Colleges

Additional grantees on page

Legal Description (abbreviated form: i.e. lot, block, plat or section, township, range,
quarter/quarter)

SW 1/4 of the NW 1/4 Section 2, Township 18N, Range 1W, W.M.

Additional legal is on page

Assessor's Property Tax Parcel/Account Number

37590000200

11802230000

Additional parcel #-s on page

The Auditor/Recorder will rely on the information provided on this form. The staff will not read the document to verify the accuracy or completeness of the indexing information provided herein.



RECITALS

WHEREAS, Declarants are the owners of the real property described in Sheet "2" attached hereto and by this reference incorporated herein as the "Property", and desires to create thereon wetlands to be maintained in accordance with Case Number 07-83 approved by the City of Lacey and Permit Number NWS-2007-359-SO approved by the U.S. Army Corps of Engineers (USACE);

WHEREAS, Declarants desire to provide for the preservation of the wetland and wetland buffer values of the Property and for the maintenance and management of the Property and improvements thereon, and to this end desires to subject the Property to the covenants, restrictions, easements and other encumbrances hereinafter set forth, each and all of which is and are for the benefit of the Property.

NOW, THEREFORE, the Declarants declare that the Property shall be held, transferred, sold, conveyed and occupied subject to the covenants, restrictions, easements and other encumbrances hereinafter set forth in this Declaration.

DEFINITIONS

1.1 "Declaration" shall mean the covenants, restrictions, and all other provisions set forth in the Declaration of Covenants and Restrictions.

1.2 "Declarants" shall mean and refer to Railie Mae/Jaylee Homeowners Association, and the State of Washington - Board of Community and Technical Colleges their successors or assigns.

1.3 "Case Number 07-83" shall mean the final document approved by the City of Lacey that formally establishes the wetland mitigation and stipulates the terms and conditions of its construction, operation and long-term management.

1.4 "Permit Number NWS-2007-359-SO" shall mean the final document approved by the USACE that formally establishes the wetland mitigation and stipulates the terms and conditions of its construction, operation and long-term management.

1.5 "Property" shall mean and refer to all real property subject to this Declaration, as more particularly set forth in Sheet "2".

PROPERTY SUBJECT TO THIS DECLARATION

The real property which is and shall be held, transferred, sold, conveyed and occupied subject to this Declaration is located within Thurston County Parcel Numbers 37590000200 and 11802230000 in the SW ¼ of the NW ¼ of Section 2, Township 18N, Range 1W, W.M. Thurston County, Washington and is more particularly described in Sheet "2".

GENERAL PLAN OF DEVELOPMENT

Declarants currently manage the site for the purpose of wetland mitigation. Current management is in accordance with Case Number 07-83 and USACE permit number NWS-2007-359-SO.

USE RESTRICTIONS AND MANAGEMENT RESPONSIBILITIES

The Property shall be used and managed for wetland mitigation purposes in accordance with City of Lacey Case Number 07-83 and USACE Permit Number NWS-2007-359-SO. Declarants and all users of the Property are subject to any and all easements, covenants and restrictions of record affecting the Property.

1. There shall be no removal, destruction, cutting, trimming, mowing, alteration or spraying with biocides of any vegetation in the Property, nor any disturbance or change in the natural habitat of the Property except those activities associated with maintenance.
2. There shall be no agricultural, commercial, or industrial activity undertaken or allowed in the Property; nor shall any right of passage across or upon the Property be allowed or granted if that right of passage is used in conjunction with agricultural, commercial or industrial activity.
3. There shall be no filling, excavating, dredging, mining or drilling; no removal of topsoil, sand, gravel, rock minerals or other materials, nor any dumping of ashes, trash or of any other material, and no changing of the topography of the land of the Property in any manner.
4. There shall be no construction or placing of buildings, mobile homes, advertising signs, billboards, or other advertising material, or other structures on the Property.

CITY OF LACEY PROVISIONS

A. The owner of any property with field verified presence of wetland or wetland buffer pursuant to Section 14.28.090 on which a development proposal is submitted shall file for record with the Thurston County Auditors Office a notice in the form set forth in subsection 14.28.220(B). Such notice shall provide in the public record the presence of a wetland or wetland buffer, the application of this chapter to the property, and that limitations on actions in or affecting such wetlands and their buffers may exist. The applicant shall submit proof that the notice has been filed for record before an activity is commenced on the subject property. The notice shall run with the land and failure to provide such notice to any purchaser prior to transferring any interest in the property shall be in violation of this chapter.

B. Form of Notice:

WETLAND AND/OR WETLAND BUFFER NOTICE

Legal Description: Portions of Parcel Nos 37590000200 and 11802230000 in the SW ¼ of the NW ¼ of Section 2, Township 18N, Range 1W, W.M.

Present owner: Raili Mae/Jaylee Homeowners Association and State of Washington – Board of Community and Technical Colleges

NOTICE: This property contains wetlands or their buffers as defined by the city of Lacey Ordinance. The property was the subject of a mitigation proposal for application # Case Number 07-83

filed on (June 5, 2007). Restrictions on use or alteration of the wetlands or their buffers may exist due to natural conditions of the property and resulting regulations. Review of such application has provided information on the location of wetlands or wetland buffers and restrictions on their use through setback areas. A copy of the plan showing such setback areas attached hereto (Sheet 2).

Signature of owner

STATE OF WASHINGTON)

COUNTY OF THURSTON)

On this day personally appeared before me to me known to be the individual(s) described in and who executed the within and foregoing instrument and acknowledged that they signed the same as their free and voluntary act and deed for the uses and purposes therein stated.

Given under my hand and official seal this _____ day of _____, 20___. NOTARY PUBLIC in and for the state of Washington, residing at _____.

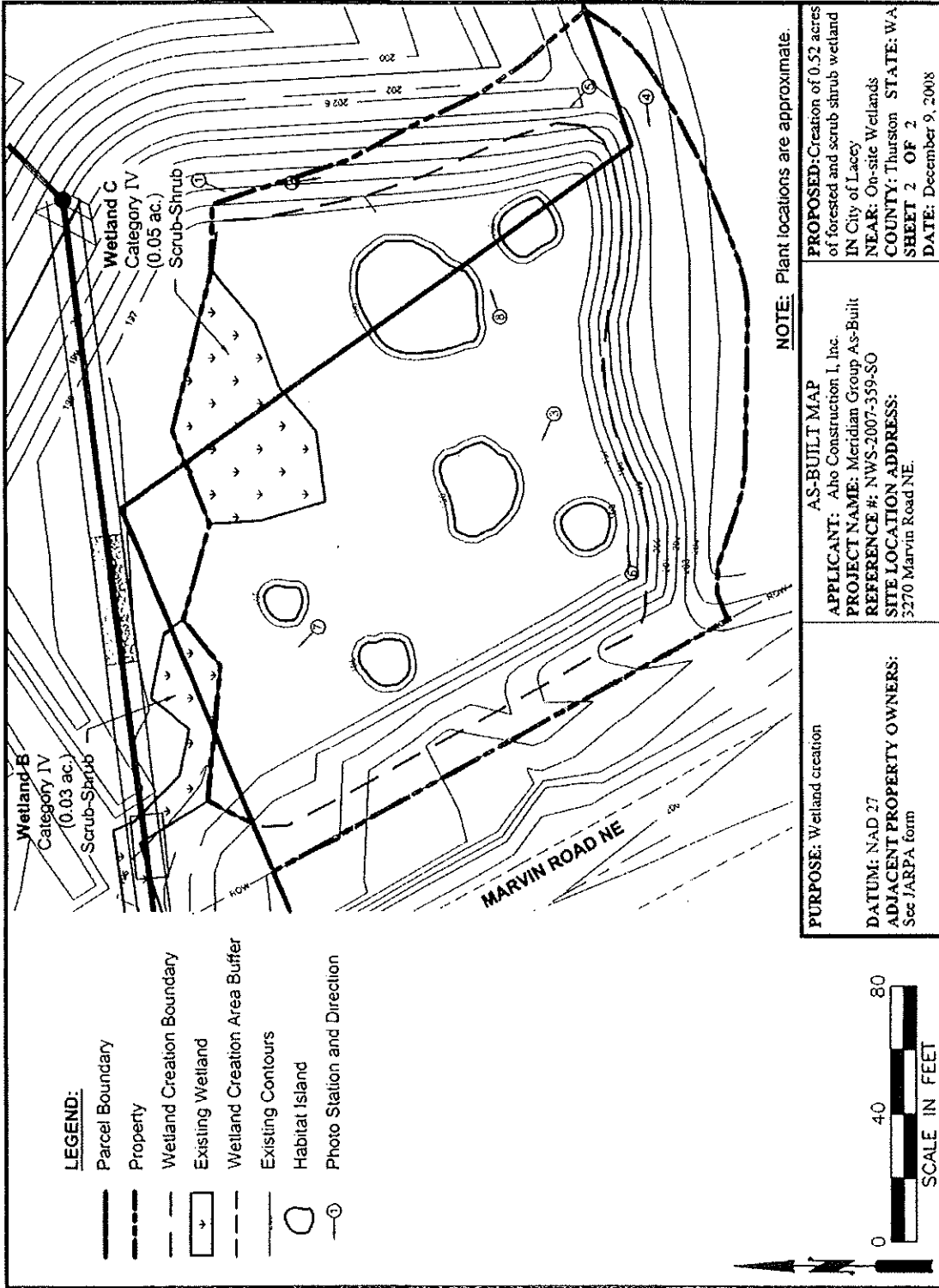
Signature of owner

STATE OF WASHINGTON)

COUNTY OF THURSTON)

On this day personally appeared before me to me known to be the individual(s) described in and who executed the within and foregoing instrument and acknowledged that they signed the same as their free and voluntary act and deed for the uses and purposes therein stated.

Given under my hand and official seal this _____ day of _____, 20___. NOTARY PUBLIC in and for the state of Washington, residing at _____.



LEGEND:

- Parcel Boundary
- Property
- Wetland Creation Boundary
- Existing Wetland
- Wetland Creation Area Buffer
- Existing Contours
- Habitat Island
- Photo Station and Direction

NOTE: Plant locations are approximate.

<p>PURPOSE: Wetland creation</p> <p>DATUM: NAD 27</p> <p>ADJACENT PROPERTY OWNERS: See JARPA form</p>	<p>AS-BUILT MAP</p> <p>APPLICANT: Aho Construction I, Inc.</p> <p>PROJECT NAME: Meridian Group As-Built</p> <p>REFERENCE #: NWS-2007-359-SO</p> <p>SITE LOCATION ADDRESS: 3270 Marvin Road NE.</p>	<p>PROPOSED: Creation of 0.52 acres of forested and scrub shrub wetland</p> <p>IN: City of Lacey</p> <p>NEAR: On-site Wetlands</p> <p>COUNTY: Thurston STATE: WA</p> <p>SHEET 2 OF 2</p> <p>DATE: December 9, 2008</p>
--	---	---



REGULAR MEETING AGENDA ITEM
May 6, 2010

TAB 3d

Consent Item **Action (Resolution 10-05-13)**

Topic

Centralia College: Property Acquisition

Description

Centralia College's master plan includes the College's continued expansion plan and long-term goal of acquiring properties adjacent to the college campus. Acquisitions of real property require State Board authorization. The college and its board of trustees are requesting authority to acquire properties located at 712 and 714 Centralia College Boulevard, in Centralia.

Key Questions

- How does the purchase benefit Centralia's strategic goals?
- Is the purchase of these properties within the college's financial and master plans?

Analysis

Centralia College is seeking authority to acquire properties within their master plan located at 712 and 714 Centralia College Boulevard. The properties are located next to existing property owned by the college and is a part of their continued expansion of science programs related to the construction of their new science center. These purchases would allow the college to continue creating outdoor learning labs for their students.

Centralia College secured an appraisal, and negotiated an acceptable price within the amount allowable by the state. There are sufficient capital funds allocated to the science building replacement project to cover the purchase prices not to exceed \$280,000. The college's Board of Trustees delegated authority to the president to acquire property on September 21, 2000.

Recommendation

The staff recommends approval of Resolution 10-05-13, allowing Centralia College to expend up to \$280,000 for properties located at 712 and 714 Centralia College Boulevard, in Centralia.

Prepared by: Wayne Doty, 360-704-4382, wdoty@sbctc.edu

STATE OF WASHINGTON
STATE BOARD FOR COMMUNITY AND TECHNICAL COLLEGES
RESOLUTION 10-05-13

A resolution relating to Centralia College's property acquisition.

WHEREAS, Centralia College has identified properties within the master plan boundary that are available for sale; and

WHEREAS, the Centralia College Board of Trustees on September 21, 2000, delegated authority to the president to acquire property; and

WHEREAS, the college has a reserve balance of sufficient funds for this acquisition.

THEREFORE BE IT RESOLVED that the State Board for Community and Technical Colleges authorizes Centralia College to use up to \$280,000 to purchase properties located at 712 and 714 Centralia College Boulevard, in Centralia.

APPROVED AND ADOPTED on May 6, 2010.

J.A. Bricker, Chair

ATTEST:

Charles N. Earl, Secretary



REGULAR MEETING AGENDA ITEM

TAB 3e

May 6, 2010

Consent Item Action (Resolution 10-05-14)

Topic

Highline Community College – Noise Abatement Program – Building 9 Improvements

Description

Highline Community College is proposing to spend up to \$1.95 million in local funds to reduce the noise impacts caused by SeaTac airport aircraft traffic. Highline will be reimbursed for these expenses in accordance with their Avigation Easements granted to the Port of Seattle in 1994 and 2008. Expenditure of local funds on capital projects that exceed \$400,000 requires State Board authorization.

Major Considerations

- The college will be reimbursed for this project by the Port of Seattle.

Analysis

On April 8, 1994, the Highline Community College granted the Port of Seattle an Avigation Easement with conditions that the Port would assist with certain modifications and installation on the campus for noise-impact reduction purposes. The easement was modified on February 6, 2008. Under these agreements, modifications have been made to buildings 2, 7, 12, 17, 10, 22, 13, 3, 21, 16, 19, and 14. The proposed expenditures for building 9 are in negotiation with the Port now and expected to bid in May. Future modifications of buildings 5, 6, 11, 15, 18, 23, 24, 25, 26, and 27 are also being considered. The primary modifications are to replace the HVAC and install sound insulation assemblies. This work impacts many of the building systems and triggers current seismic and to also meet ADA codes.

Recommendation

Staff recommends approval of Resolution 10-05-14, allowing Highline Community College to expend up to \$1.95 million in local funds the Noise Abatement Improvements to Building 9, to be reimbursed by the Port of Seattle.

Prepared by: Wayne Doty, 360-704-4382, wdoty@sbctc.edu

STATE OF WASHINGTON
STATE BOARD FOR COMMUNITY AND TECHNICAL COLLEGES
RESOLUTION 10-05-14

A resolution relating to Highline Community College's Noise Abatement Improvements to Building 9

WHEREAS, Highline Community College is located under SeaTac Airport aircraft traffic; and

WHEREAS, Highline Community College has entered into an agreement with the Port of Seattle on February 6, 2008 to reimburse noise abatement expenses; and

WHEREAS, the College has identified the necessary improvements for Building 9.

THEREFORE BE IT RESOLVED that the State Board for Community and Technical Colleges authorizes Highline Community College to expend up to \$1.95 million in local funds for Noise Abatement Improvements to Building 9.

APPROVED AND ADOPTED on May 6, 2010.

J.A. Bricker, Chair

ATTEST:

Charles N. Earl, Secretary



REGULAR MEETING AGENDA ITEM

TAB 3f

May 6, 2010

Consent Item Action (Resolution 10-05-15)

Topic

Everett Community College – Boundary Line Adjustment

Description

Everett Community College and the Everett School District need to correct errors in the property lines between the two campuses. Property lines were not correctly adjusted and recorded when the college separated from the Everett School District over 40 years ago. Boundary line adjustments require State Board approval.

Major Considerations

- Everett Community College and the Everett School District are in agreement with the boundary line adjustments.

Analysis

When Everett Community College separated from the Everett School District in the 1960s, an error was made with the recorded property boundary lines between the College and the School District. The School District has completed the documentation necessary for this project, and the College agrees with the boundary line adjustments. The Department of General Administration has delegated authority to the College to execute the boundary line adjustment documents. The College's Board of Trustees approved the project on March 16, 2010.

Recommendation

The staff recommends approval of Resolution 10-05-15, approving Everett Community Colleges boundary line adjustment.

Prepared by: Wayne Doty, 360-704-4382, wdoty@sbctc.edu

STATE OF WASHINGTON
STATE BOARD FOR COMMUNITY AND TECHNICAL COLLEGES
RESOLUTION 10-05-15

A resolution relating to Everett Community College's Boundary Line Adjustment

WHEREAS, an error was made with the recorded property boundary lines between Everett Community College and the Everett School District when the College separated from the School District in the 1960s; and

WHEREAS, the School District has completed the documentation necessary for this project, and the College agrees with the boundary line adjustments; and

WHEREAS, the Everett Community College's Board of Trustees approved the project on March 16, 2010.

THEREFORE BE IT RESOLVED that the State Board for Community and Technical Colleges approves the Everett Community College's Boundary Line Adjustment.

APPROVED AND ADOPTED on May 6, 2010.

J.A. Bricker, Chair

ATTEST:

Charles N. Earl, Secretary

After recording, return to:

Everett School District No. 2
Attn: Chuck Booth
4730 Colby Avenue
Everett, WA 98203

WASHINGTON STATE RECORDER'S Cover Sheet (RCW 65.04)

DOCUMENT TITLE(S) (or transactions contained therein): QUITCLAIM DEED
REFERENCE NUMBER(S) OF DOCUMENTS ASSIGNED OR RELEASED: N/A <input type="checkbox"/> Additional reference #s on page ___ of document(s)
GRANTOR(S) (Last name first, then first name and initials) Everett School District No. 2 <input type="checkbox"/> Additional names on page ___ of document
GRANTEE(S) (Last name first, then first name and initials) State Board for Community and Technical Colleges, Everett Community College <input type="checkbox"/> Additional names on page ___ of document
LEGAL DESCRIPTION (abbreviated: i.e., lot, block, plat or section, township, range) Ptn. of NW 1/4 NW 1/4 of Sec. 17, T. 29N, R. 5E, W.M. <input checked="" type="checkbox"/> Additional legal is on Exhibit A of document
ASSESSOR'S PROPERTY TAX PARCEL/ACCOUNT NUMBER 29051700201800; 29051700201900 <input type="checkbox"/> Assessor Tax # not yet assigned

QUITCLAIM DEED

The Grantor, **Everett School District No. 2**, a Washington municipal corporation (formerly known as Everett School District No. 24, a Washington municipal corporation), for good and valuable consideration, the receipt and sufficiency of which is hereby acknowledged, does hereby convey and quitclaim to the **State Board for Community and Technical Colleges, Everett Community College**, the described real estate situated in County of Snohomish, State of Washington more particularly described on Exhibit A hereto.

DATED _____, 2010.

EVERETT SCHOOL DISTRICT NO. 2,
a Washington municipal corporation

By: _____
Its: _____

STATE OF WASHINGTON)
) ss.
COUNTY OF SNOHOMISH)

On this _____ day of _____, 2010, before me, the undersigned, a Notary Public in and for the State of Washington, duly commissioned and sworn, personally appeared _____, to me known to be the person who signed as _____ of Everett School District No. 2, a Washington municipal corporation, the municipal corporation that executed the within and foregoing instrument, and acknowledged said instrument to be the free and voluntary act and deed of said municipal corporation for the uses and purposes therein mentioned.

IN WITNESS WHEREOF I have hereunto set my hand and official seal the day and year first above written.

(Signature of Notary)

(Print or stamp name of Notary)

NOTARY PUBLIC in and for the State
of Washington, residing at _____.
My appointment expires: _____.

EXHIBIT A
Legal Description

That portion of the northwest quarter of the northwest quarter of Section 17 and the northeast quarter of the northeast quarter of Section 18, Township 29 North, Range 5 East, W.M., Snohomish County, Washington described as follows:

Commencing at the northwest corner of said Section 17, said corner being the northeast corner of Block 166, First Addition To Legion Park, according to the Plat thereof recorded in volume 12 of Plats, page 123, records of said County; thence S01°05'04"W, along the west line of said section and the east line of said plat, 119.29 feet to the northeast corner of Lot 3, Block 166 of said plat and THE POINT OF BEGINNING of the herein described tract; thence N89°23'17"W, along the north line of said lot, 207.88 feet to the northwest corner of said lot, said corner being on the east right of way margin of Wetmore Avenue, as established by said plat; thence S00°34'49"W, along said east margin and the east right of way margin of Wetmore Avenue as established by Swalwell's 4th Addition according to the Plat thereof recorded in Volume 7 of Plats, page 44, records of said county, 631.06 feet; thence S88°55'16"E 107.01 feet; thence S00°12'28"E 155.38 feet; thence N89°05'59"E 223.93 feet; thence N00°32'00"E 118.35 feet; thence S89°28'00"E 279.23 feet, thence; S24°04'27"E 168.12 feet to a non-radial intersection with a 65.00 foot radius curve to the right, the center of which bears S06°16'49"W; thence southeasterly, along said curve through a central angle of 79°59'06" a distance of 90.74 feet to a point of tangency; thence S03°44'05"E 3.89 feet' thence N81°24'48"E 2.71 feet to a radial intersection with a 75.00 foot radius curve to the right, the center of which bears S81°24'48"W thence southerly, along said curve through a central angle of 11°13'58" a distance of 14.70 feet to a point of tangency; thence S02°38'46"W 18.51 feet to a point of tangency with a 45.00 foot radius curve to the right; thence southwesterly, along said curve through a central angle of 32°28'25" a distance of 25.50 feet to a point of tangency; thence S35°07'11"W 12.61 feet to a point of tangency with a 65.00 foot radius curve to the right; thence southwesterly, along said curve through a central angle of 54°39'20" a distance of 62.00 feet; thence S00°51'33"W 122.98 feet to the north right of way margin of 10th Street as established by Bailey Addition To Everett according to the Plat thereof, recorded in Volume 9 of Plats, page 78, records of said county; thence S89°23'46"E, along said north margin, 132.97 feet to the southeast corner of Lot 17, Block 179 of said Plat, said corner being on the west right of way margin of the alley running through said Block 179; thence N00°31'28"E, along said west margin and the west margin as established by said Swalwell's 4th Addition, 374.72 feet to the northerly terminus of said alley as vacated by City of Everett Ordinance Number 4092, recorded under Auditor's File Number 2026775 records of said county; thence S89°23'50"E, along said northerly terminus, 24.00 feet to the east margin of said alley; thence S00°31'28"W, along said east margin 374.72 feet to the to the north right of way margin of said 10th Street; thence S89°23'46"E, along said north margin, 120.09 feet to the southeast corner of Lot 18, Block 179 of said Bailey Addition, said corner being on the west right of way margin of Lombard Avenue as established by said plat; thence N00°30'56"E, along said west margin and the west right of way margin of Lombard Avenue as established by said Swalwell's 4th Addition, 651.24 feet to the northeast corner of Lot 24, Block 164 of said Swalwell's 4th Addition; thence

S89°12'06"E, along the north line of said Swalwell's 4th Addition, 80.00 feet to the northwest corner of Lot 11, Block 163 of said Swalwell's 4th Addition; thence N00°30'56"E, along the northerly prolongation of the east right of way margin of said Lombard Avenue, 285.00 feet; thence N66°41'06"W 416.79 feet; thence N89°28'03" W 439.28 feet to the west line of said section 17 and the east line of said First Addition To Legion Park; thence N01°05'04"E, along said common line, 0.93 feet to the POINT OF BEGINNING

Contains 765,991± square feet (17.5847 acres);

AND TOGETHER WITH:

That portion of the northeast quarter of the northeast quarter of Section 18, Township 29 North, Range 5 East, W.M., Snohomish County, Washington described as follows:

Commencing at the northeast corner of said Section 18, said corner being the northeast corner of Block 166, First Addition To Legion Park, according to the Plat thereof recorded in volume 12 of Plats, page 123, records of said County; thence S01°05'04"W, along the east line of said section and the east line of said plat, 119.29 feet to the northeast corner of Lot 3, Block 166 of said Plat; thence N89°23'17"W, along the north line of said lot, 207.88 feet to the northwest corner of said lot, said corner being on the east right of way margin of Wetmore Avenue, as established by said plat; thence S00°34'49"W, along said east margin and the east right of way margin of Wetmore Avenue as established by Swalwell's 4th Addition according to the Plat thereof recorded in Volume 7 of Plats, page 44, records of said county, 631.06 feet to THE POINT OF BEGINNING of the herein described tract; thence S88°55'16"E 107.01 feet; thence S00°12'28"E 155.38 feet; S89°05'59"W 109.18 feet to the east right of way margin of said Wetmore Avenue; thence N00°34'49"E, along said east margin, 159.12 feet to the POINT OF BEGINNING

Contains 16,996 ± square feet (0.3902 acres).

AFTER RECORDING MAIL TO:

Everett School District No. 2.
Attn: Chuck Booth
4730 Colby Avenue
Everett, WA 98203

Document Title(s) (or transactions contained therein)(all areas applicable to you document must be filed in) 1. Relinquishment of Reciprocal Easement Agreement 2.
Reference Numbers of Documents Assigned or Released: 9805220792 <input type="checkbox"/> Additional reference #s on page ____ of document(s)
Grantor(s) (Last name first, then first name and initials) 1. State Board for Community and Technical Colleges, Everett Community College 2. Everett School District No. 2 Additional names on page ____ of document
Grantee(s) (Last name first, then first name and initials) 1. State Board for Community and Technical Colleges, Everett Community College 2. Everett School District No. 2 Additional names on page ____ of document
Legal description (abbreviated:i.e. lot, block, plat or section, township, range) Portion of the NW 1/4 of Section 17, Township 29 North, Range 5 East, W.M. Additional legal is on page ____ of document
Assessor's Property Tax Parcel/Account Number 29051700201800 29051700201900 Assessor Tax # not yet assigned
The Auditor/Recorder will rely on the information provided on the form. The staff will not read the document to verify the accuracy or completeness of the indexing information provided herein.

Relinquishment of Reciprocal Easement Agreement

State Board for Community and Technical Colleges, Everett Community College and Everett School District No. 2, a municipal corporation of the State of Washington, the parties to that certain Reciprocal Easement Agreement, recorded under Auditor's File Number 9805220792, records of Snohomish County, Washington, for and in consideration of mutual benefits hereby acknowledged do hereby terminate said Reciprocal Easement Agreement and forever relinquish, release, and abandon any and all rights, obligations and intrests, if any, including without limitation any easements and contractual rights, that either may have under said Reciprocal Easement Agreement.

IN WITNESS WHEREOF, each has executed this instrument on this ____ day of _____, 2010

**State Board for Community and Technical
Colleges, Everett Community College**

By: _____

Its: _____

By: _____

Its: _____

**Everett School District No. 2, a
Washington municipal corporation**

By: _____

Its: _____

STATE OF WASHINGTON)
) ss.
COUNTY OF SNOHOMISH)

On this _____ day of _____, 2010, before me, a Notary Public in and for the State of Washington, duly commissioned and sworn, personally appeared _____, to me known to be the _____ of the State Board for Community and Technical Colleges, the agency that executed the foregoing instrument, and acknowledged said instrument to be the free and voluntary act and deed of said agency for the uses and purposes therein mentioned, being authorized so to do.

IN WITNESS WHEREOF I have hereunto set my hand and official seal the day and year first above written.

(Signature of Notary)

(Print or stamp name of Notary)
NOTARY PUBLIC in and for the State
of Washington, residing at _____.
My appointment expires: _____.

STATE OF WASHINGTON)
) ss.
COUNTY OF SNOHOMISH)

On this _____ day of _____, 2010, before me, a Notary Public in and for the State of Washington, duly commissioned and sworn, personally appeared _____, to me known to be the _____ of Everett Community College, the agency that executed the foregoing instrument, and acknowledged said instrument to be the free and voluntary act and deed of said agency for the uses and purposes therein mentioned, being authorized so to do.

IN WITNESS WHEREOF I have hereunto set my hand and official seal the day and year first above written.

(Signature of Notary)

(Print or stamp name of Notary)
NOTARY PUBLIC in and for the State
of Washington, residing at _____.
My appointment expires: _____.



REGULAR MEETING AGENDA ITEM

TAB 3f

May 6, 2010

Consent Item Action (Resolution 10-05-15)

Topic

Everett Community College – Boundary Line Adjustment

Description

Everett Community College and the Everett School District need to correct errors in the property lines between the two campuses. Property lines were not correctly adjusted and recorded when the college separated from the Everett School District over 40 years ago. Boundary line adjustments require State Board approval.

Major Considerations

- Everett Community College and the Everett School District are in agreement with the boundary line adjustments.

Analysis

When Everett Community College separated from the Everett School District in the 1960s, an error was made with the recorded property boundary lines between the College and the School District. The School District has completed the documentation necessary for this project, and the College agrees with the boundary line adjustments. The Department of General Administration has delegated authority to the College to execute the boundary line adjustment documents. The College's Board of Trustees approved the project on March 16, 2010.

Recommendation

The staff recommends approval of Resolution 10-05-15, approving Everett Community Colleges boundary line adjustment.

Prepared by: Wayne Doty, 360-704-4382, wdoty@sbctc.edu

STATE OF WASHINGTON
STATE BOARD FOR COMMUNITY AND TECHNICAL COLLEGES
RESOLUTION 10-05-15

A resolution relating to Everett Community College's Boundary Line Adjustment

WHEREAS, an error was made with the recorded property boundary lines between Everett Community College and the Everett School District when the College separated from the School District in the 1960s; and

WHEREAS, the School District has completed the documentation necessary for this project, and the College agrees with the boundary line adjustments; and

WHEREAS, the Everett Community College's Board of Trustees approved the project on March 16, 2010.

THEREFORE BE IT RESOLVED that the State Board for Community and Technical Colleges approves the Everett Community College's Boundary Line Adjustment.

APPROVED AND ADOPTED on May 6, 2010.

J.A. Bricker, Chair

ATTEST:

Charles N. Earl, Secretary



REGULAR MEETING AGENDA ITEM

May 6, 2010

TAB 3g

Consent Item Action (Resolution 10-05-16)

Topic

Everett Community College – Parks Student Union Building Addition and Renovation Project

Description

Everett Community College is proposing to use up to \$5 million in local funds to add an addition and conduct renovations to their Parks Student Union Building. Expenditure of local funds on capital projects that exceed \$400,000 requires State Board authorization. The college and its board of trustees are requesting authority to use local funds for the Parks Student Union Building Addition and Renovation project.

Major Considerations

- The college has sufficient local funds dedicated for this project.

Analysis

On September 16, 2009, the Everett Community College Board of Trustees approved the use of up to \$5 million in local funds for their Parks Student Union Building Addition and Renovation Project. The project includes a 5600 square foot Café, relocating the Russell Day Gallery, and the addition of two new restrooms in the Parks Student Union Building. Design of the project is complete and will go out to bid in May 2010. The project will take approximately nine to ten months to complete. The new café and gallery are scheduled to open at the beginning of Spring Quarter 2011.

Recommendation

Staff recommends approval of Resolution 10-05-16, allowing Everett Community College to expend up to \$5 million in local funds for their Parks Student Union Building Addition and Renovation project.

Prepared by: Wayne Doty, 360-704-4382, wdoty@sbctc.edu

STATE OF WASHINGTON
STATE BOARD FOR COMMUNITY AND TECHNICAL COLLEGES
RESOLUTION 10-05-16

A resolution relating to Everett Community College's Parks Student Union Building Addition and Renovation Project

WHEREAS, Everett Community College's Parks Student Union Building Addition and Renovation Project includes a 5600 square foot Café, relocating the Russell Day Gallery, and the addition of two new restrooms in the Parks Student Union Building; and

WHEREAS, the Everett Community College Board of Trustees approved the project on September 16, 2009; and

WHEREAS, the College has sufficient local funds dedicated for this project.

THEREFORE BE IT RESOLVED that the State Board for Community and Technical Colleges authorizes Everett Community College's to expend up to \$5 million in local funds for their Parks Student Union Building Addition and Renovation Project.

APPROVED AND ADOPTED on May 6, 2010.

J.A. Bricker, Chair

ATTEST:

Charles N. Earl, Secretary



REGULAR MEETING AGENDA ITEM **(May 6, 2010)**

TAB 4

Discussion Action (Resolution 10-05-17)

Topic

2010-11 Tuition Rates

Description

The State Board is responsible for adopting operating fees, building fees and the maximum allowable student activity fees for the community colleges, and the tuition for upper division students enrolled in the system's applied baccalaureate programs. At this meeting the Board will be asked to adopt 2010-11 tuition rates, effective Fall Quarter 2010.

Key Questions

- Should lower division resident tuition increase by the maximum allowable 7 percent?
- Should lower division non-resident tuition increase by 7 percent or the same dollar amount as resident tuition?
- Should upper division tuition increase by the maximum allowable 14 percent?

Analysis

Legislatively Authorized Maximum Tuition Increases

Changes in tuition and fees must be consistent with the provisions in the operating budget bill. The 2009-11 operating budget bill authorizes the following tuition increases in FY 2010 and FY 2011:

- Resident tuition may increase by up to an average of 7 percent; the percentage increase can vary by credit load.
- Nonresident tuition may increase by "amounts judged reasonable and necessary by the Board".
- Upper division applied baccalaureate tuition rates may increase by up to 14 percent.

Increased state and federal financial aid helps to mitigate the impact of higher tuition rates on students. The 2010 supplemental budget made no changes to the State Need Grant. In addition, a federal tax credit may help reduce educational costs for students who do not qualify for state or federal grants.

Last May, the State Board adopted the following tuition increases for the current year (FY 2010):

- Lower division resident student tuition increased by seven percent across all credit loads.
- Lower division nonresident student tuition increased by about the same dollar amount as resident students. This resulted in non-resident tuition increases of about 2 percent.
- Upper division applied baccalaureate tuition rates increased by 14 percent

Tuition and Budget Reductions

The Governor and Legislature faced a \$9 billion shortfall as they wrote the original 2009-11 budget and another \$2.8 billion shortfall as they wrote the 2010 supplemental budget. As part of the solution to the shortfalls, they reduced state funding for community and technical colleges in the original 2009-11 budget by \$82 million (11 percent) per year and in the 2010 supplemental budget by another \$26 million (made up of a \$45 million cut and additional one-time Worker Retraining Program funding of \$17.6 million). The cumulative net change in annual state funding is 14 percent.

The legislatively authorized 7 percent tuition increases provide additional resources to the colleges of about \$18.5 million in FY 2010 and an additional \$18.5 million in FY 2011. The net impact of budget reductions and tuition increases is about 8 percent in FY 2010 and 9 percent in FY 2011. The net impact varies by college, depending on the tuition yield at each college.

Resident Tuition

Current year tuition for a non-resident student enrolled for 15 credits is \$975 per quarter or \$2,925 per year. This is slightly below the national average of \$3,029 for community college tuition.

Full-time students pay an average of \$65 per credit, compared with \$81 per credit paid by part-time students. In 2002 part-time students paid 50 percent more to obtain a two-year degree compared to full-time students. Beginning in 2002, the Board steadily reduced the “part-time premium” by applying tuition increases differentially across credit loads. By 2008-09, the premium had been reduced to 25 percent. That ratio has been maintained for the last three years by applying tuition increases evenly across all credit loads.

At their February 2010, presidents and chancellors voted to recommend a 2010-11 resident tuition rate increase of 7 percent on all credit loads. A tuition schedule consistent with this recommendation is shown at Attachment A.

Non-Resident Tuition

Current year tuition for a non-resident student enrolled for 15 credits is \$8,145 per year. This is almost 3 times the amount paid by a resident student and about 7 percent more than the actual cost of instruction. Washington non-resident tuition is about 8 percent higher than the national average community college tuition rate of \$7,525, and is also higher than the non-resident community college tuition rates in nearby Western states (California \$5,880, Idaho \$6,995, and Oregon \$7,484). (See Attachment B, page 1.)

Last year, the Board increased non-resident tuition by the same dollar amounts as resident tuition. Presidents and chancellors voted at their February 2010 meeting to recommend the same approach this year, citing concerns about their ability to attract international and other non-resident students to their colleges. An analysis of non-resident enrollment over time did not show a strong causal relationship between changes in non-resident tuition and non-resident enrollment. (See Attachment B, page 2.) However, Washington non-resident tuition rates have long been high relative to the national average and to other Western states (see Attachment B, page 1); to understand whether this has dampened non-resident enrollment in Washington

community and technical colleges would require a more in-depth and sophisticated analysis than can be conducted with existing data.

Attachment B page 3 compares two approaches to increasing non-resident tuition. In Option 1, tuition is increased by about the same dollar amount as resident tuition. For a student taking 15 credits each quarter, Option 1 would result in an annual tuition increase of \$225. In Option 2, non-resident tuition is increased by 7 percent. For a student taking 15 credits each quarter, Option 2 would result in an annual tuition increase of \$570.

The tuition schedule in Attachment A increases non-resident tuition by the same dollar amount as resident tuition.

Upper Division Applied Baccalaureate Tuition

The operating budget bill authorizes 14 percent tuition increases for upper division applied baccalaureate courses at the two year colleges, consistent with the tuition increases authorized at the four year institutions. An additional statutory requirement is that tuition for upper division applied baccalaureate courses at two year colleges must not exceed tuition at the regional universities.

2009-10 resident tuition and fees for upper division applied baccalaureate courses is \$5,295 for 15 credits for three quarters. This is slightly below (-2 percent) the average regional university undergraduate resident tuition of \$5,416 (see Attachment C).

The 2010-11 tuition and fees schedule for upper division applied baccalaureate courses shown at Attachment A, page 3, reflects a 14 percent increase, consistent with the increases authorized for regional universities.

Background Information

Attachment A – Community College Tuition and Fee Rates

Attachment B – Tuition Analysis

Attachment C – 2009-10 Regional Universities and Community College Upper Division Tuition and Fees Rates

March 2010 Agenda Item:

http://www.sbctc.edu/general/admin/Tab_5_2011_Allocations_and_Tuition_Preview.pdf

Recommendation/Outcomes

The State Board staff recommends adoption of Resolution 10-05-17, approving the following tuition increases:

- Increase lower division resident student tuition by seven percent across all credit loads.
- Increase lower division nonresident student tuition by the same dollar amount as resident students.
- Increase tuition for upper division courses in applied baccalaureate programs by fourteen percent across all credit loads.

Prepared by: Denise Graham, (360) 704-4350, dgraham@sbctc.edu

COMMUNITY COLLEGE TUITION AND FEE RATES

7 percent across-the-board increase on resident tuition. Non-resident increases by same \$ as resident.

		<u>2009-10</u>		<u>2010-11</u>	
		<u>RESIDENTS</u>	<u>NONRESIDENTS</u>	<u>RESIDENTS</u>	<u>NONRESIDENTS</u>
		<i>Assumes 15 Credits per Quarter</i>		<i>Assumes 15 Credits per Quarter</i>	
ANNUAL	Operating Fee	\$2,340.00	\$7,170.00	\$2,521.35	\$7,356.00
	Building Fee	\$285.00	\$675.00	\$292.65	\$693.00
	S & A Fee Maximum	<u>\$300.00</u>	<u>\$300.00</u>	<u>\$321.00</u>	<u>\$321.00</u>
	Total	\$2,925.00	\$8,145.00	\$3,135.00	\$8,370.00
QUARTERLY	Operating Fee	\$780.00	\$2,390.00	\$840.45	\$2,452.00
	Building Fee	\$95.00	\$225.00	\$97.55	\$231.00
	S & A Fee Maximum	<u>\$100.00</u>	<u>\$100.00</u>	<u>\$107.00</u>	<u>\$107.00</u>
	Total	\$975.00	\$2,715.00	\$1,045.00	\$2,790.00
PER CREDIT	<i>1-10 Credits</i>		<i>1-10 Credits</i>		
	Operating Fee	\$65.00	\$224.00	\$69.80	\$228.80
	Building Fee	\$8.00	\$21.00	\$8.60	\$21.60
	S & A Fee Maximum	<u>\$8.00</u>	<u>\$8.00</u>	<u>\$8.60</u>	<u>\$8.60</u>
	Total	\$81.00	\$253.00	\$87.00	\$259.00
PER CREDIT	<i>Average Incremental Increase for Each Credit between 11 and 18</i>		<i>Average Incremental Increase for Each Credit between 11 and 18</i>		
	Operating Fee	\$26.00	\$30.00	\$28.49	\$32.80
	Building Fee	\$3.00	\$3.00	\$2.31	\$3.00
	S & A Fee Maximum	<u>\$4.00</u>	<u>\$4.00</u>	<u>\$4.20</u>	<u>\$4.20</u>
	Total	\$33.00	\$37.00	\$35.00	\$40.00
EXCESS CREDIT SURCHARGE	<i>19+ Credits</i>		<i>19+ Credits</i>		
	Operating Fee Only	\$73.00	\$245.00	\$78.40	\$250.40

UNGRADED COURSES - per credit fees - Operating Fees deposited to Fund 149

		<u>2009-10</u>		<u>2010-11</u>	
	<u>Comments</u>	<u>Per Credit Fee</u>	<u>Comments</u>	<u>Per Credit Fee</u>	
Apprenticeship <i>(Clock hour equivalent)</i>	50% waiver	\$41.00 \$2.70	50% waiver	\$44 \$2.89	
Parent Ed	85% waiver	12.00	85% waiver	13.00	
ABE, ESL, GED	Colleges may waive the \$25 charge for students who are unable to pay	\$25 per student per quarter	Colleges may waive the \$25 charge for students who are unable to pay	\$25 per student per quarter	
Other ungraded courses	College Option		College Option		
OTHER WAIVERS					
Athletic waiver	Maximum for 09-10 is \$244/quarter		Maximum for 10-11 is \$261/quarter		
Other statutory waivers	College Option		College Option		

Technical colleges may increase 2010-11 tuition and S&A fee rates by no more than 7 percent or fully adopt the tuition fee charge schedule adopted by the State Board for community colleges, as provided by ESHB 1244, Section 604 (4).

TECHNICAL COLLEGES Building Fees for 2010-11 shall be increased at the rate of \$0.69 per credit hour (or \$0.04 per clock hour), as provided by ESHB 1244, Section 604(5). The full building fee for FY2010-11 is \$3.22 per credit hour or (\$0.20 per clock hour).

**Washington Community Colleges
FY2010-11 Tuition Schedule
(per quarter)**

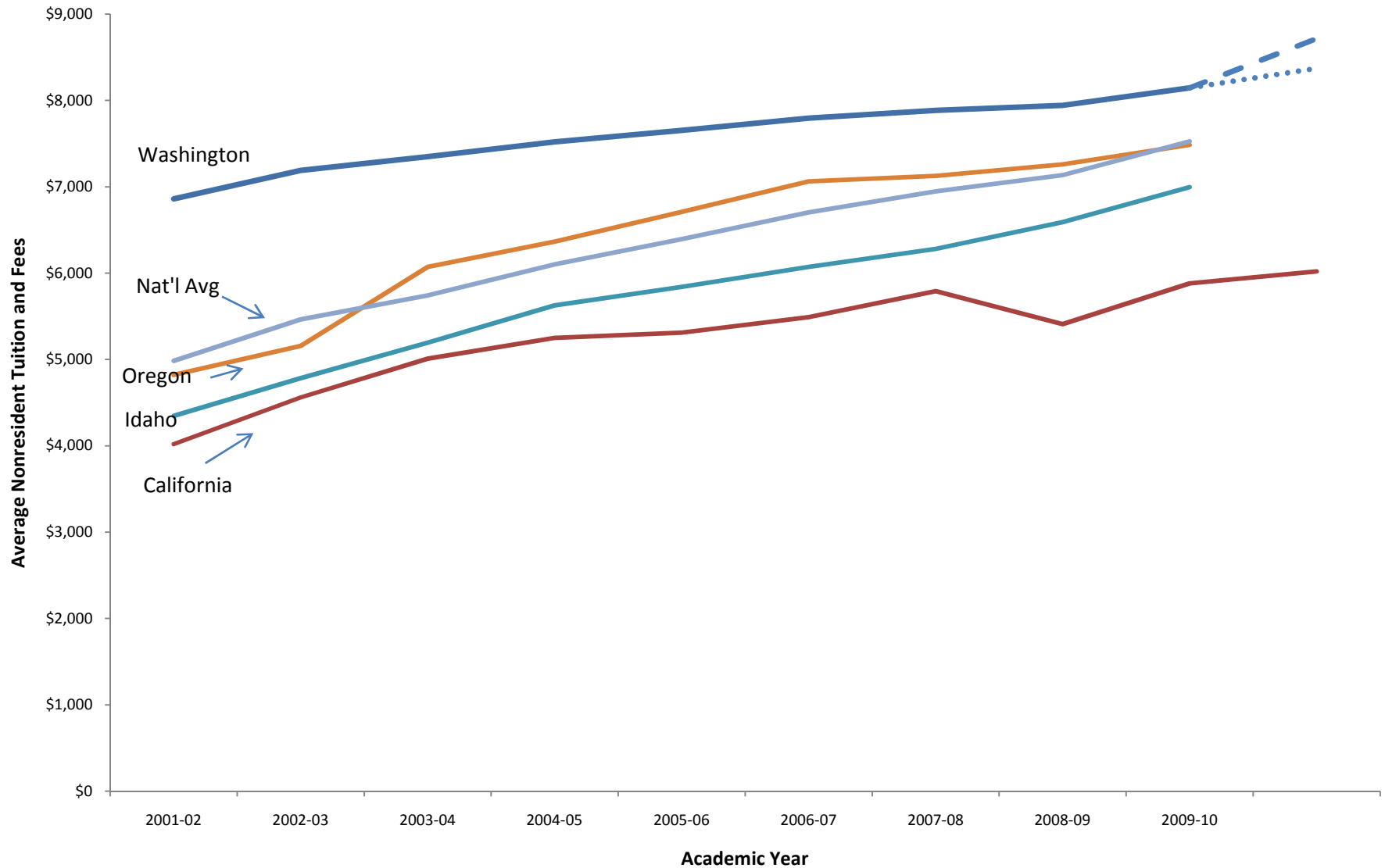
7 percent across-the-board increase on resident tuition. Non-resident increases by same \$ as resident.

# of Credits	FY2010-11 Resident				FY2010-11 Non-Resident			
	Operating Fees	Building Fees	Maximum S&A Fees	Total Tuition (Operating, Building and Max S&A Fees)	Operating Fees	Building Fees	Maximum S&A Fees	Total Tuition (Operating, Building and Max S&A Fees)
1	\$69.80	\$8.60	\$8.60	\$87.00	\$228.80	\$21.60	\$8.60	\$259.00
2	\$139.60	\$17.20	\$17.20	\$174.00	\$457.60	\$43.20	\$17.20	\$518.00
3	\$209.40	\$25.80	\$25.80	\$261.00	\$686.40	\$64.80	\$25.80	\$777.00
4	\$279.20	\$34.40	\$34.40	\$348.00	\$915.20	\$86.40	\$34.40	\$1,036.00
5	\$349.00	\$43.00	\$43.00	\$435.00	\$1,144.00	\$108.00	\$43.00	\$1,295.00
6	\$418.80	\$51.60	\$51.60	\$522.00	\$1,372.80	\$129.60	\$51.60	\$1,554.00
7	\$488.60	\$60.20	\$60.20	\$609.00	\$1,601.60	\$151.20	\$60.20	\$1,813.00
8	\$558.40	\$68.80	\$68.80	\$696.00	\$1,830.40	\$172.80	\$68.80	\$2,072.00
9	\$628.20	\$77.40	\$77.40	\$783.00	\$2,059.20	\$194.40	\$77.40	\$2,331.00
10	\$698.00	\$86.00	\$86.00	\$870.00	\$2,288.00	\$216.00	\$86.00	\$2,590.00
11	\$726.49	\$88.31	\$90.20	\$905.00	\$2,320.80	\$219.00	\$90.20	\$2,630.00
12	\$754.98	\$90.62	\$94.40	\$940.00	\$2,353.60	\$222.00	\$94.40	\$2,670.00
13	\$783.47	\$92.93	\$98.60	\$975.00	\$2,386.40	\$225.00	\$98.60	\$2,710.00
14	\$811.96	\$95.24	\$102.80	\$1,010.00	\$2,419.20	\$228.00	\$102.80	\$2,750.00
15	\$840.45	\$97.55	\$107.00	\$1,045.00	\$2,452.00	\$231.00	\$107.00	\$2,790.00
16	\$868.94	\$99.86	\$111.20	\$1,080.00	\$2,484.80	\$234.00	\$111.20	\$2,830.00
17	\$897.43	\$102.17	\$115.40	\$1,115.00	\$2,517.60	\$237.00	\$115.40	\$2,870.00
18	\$925.92	\$104.48	\$119.60	\$1,150.00	\$2,550.40	\$240.00	\$119.60	\$2,910.00
19	\$1,004.32	\$104.48	\$119.60	\$1,228.40	\$2,800.80	\$240.00	\$119.60	\$3,160.40
20	\$1,082.72	\$104.48	\$119.60	\$1,306.80	\$3,051.20	\$240.00	\$119.60	\$3,410.80
21	\$1,161.12	\$104.48	\$119.60	\$1,385.20	\$3,301.60	\$240.00	\$119.60	\$3,661.20
22	\$1,239.52	\$104.48	\$119.60	\$1,463.60	\$3,552.00	\$240.00	\$119.60	\$3,911.60
23	\$1,317.92	\$104.48	\$119.60	\$1,542.00	\$3,802.40	\$240.00	\$119.60	\$4,162.00
24	\$1,396.32	\$104.48	\$119.60	\$1,620.40	\$4,052.80	\$240.00	\$119.60	\$4,412.40
25	\$1,474.72	\$104.48	\$119.60	\$1,698.80	\$4,303.20	\$240.00	\$119.60	\$4,662.80

Washington State Community Colleges
FY2010-11 Tuition Schedule for Upper Division Courses in Applied Baccalaureate Degree Programs
 14 percent across the board increases in the operating fee for resident and nonresident students.
 (Per Quarter)

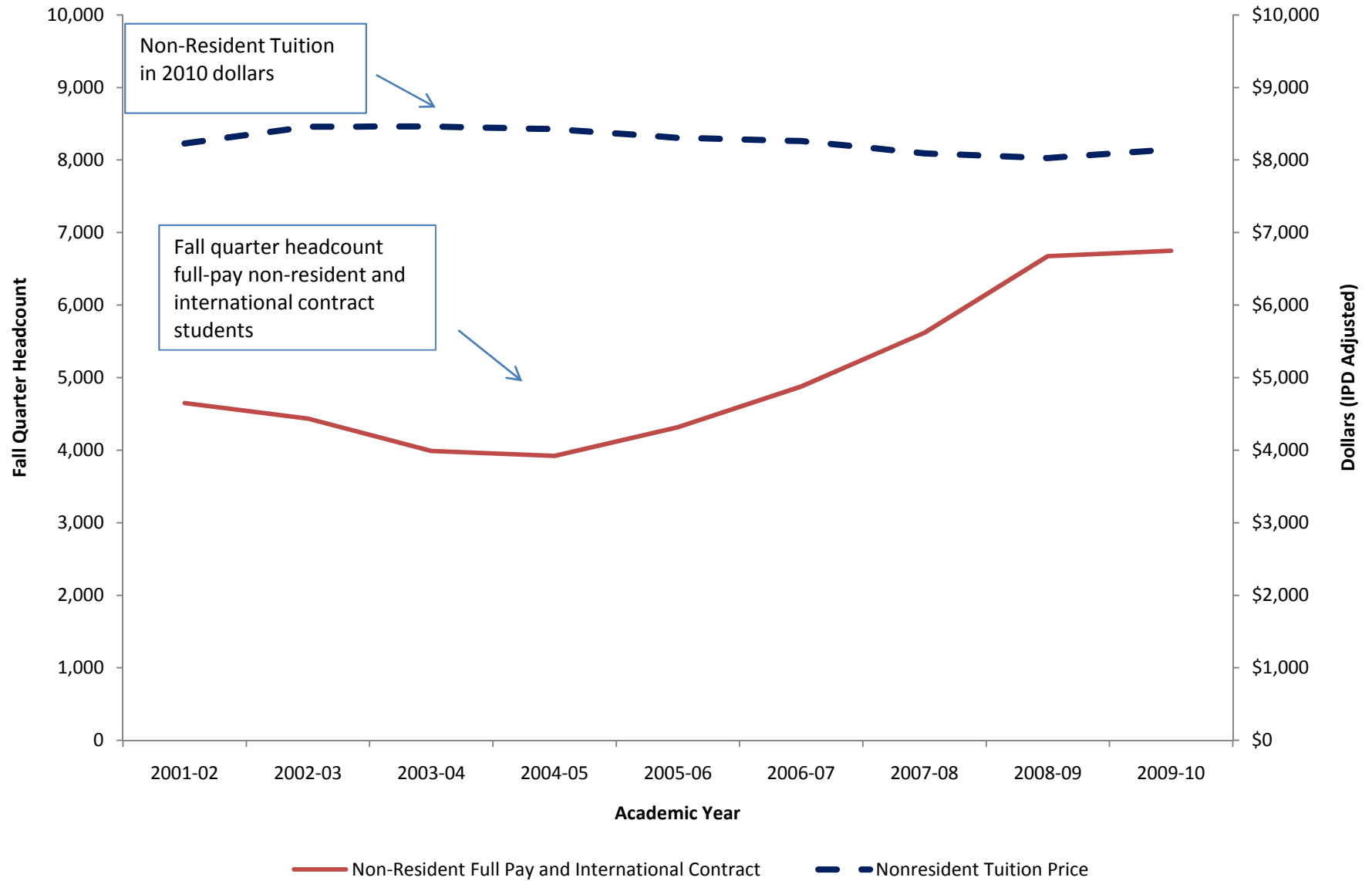
Credits	FY2010-11 Resident				FY2010-11 Nonresident			
	Applied Baccalaureate Operating Fee	CTC Building Fee	CTC Maximum S&A Fee	Applied Baccalaureate Tuition Fees	Applied Baccalaureate Operating Fee	CTC Building Fee	CTC Maximum S&A Fee	Applied Baccalaureate Tuition Fees
1	\$178.80	\$8.60	\$8.60	\$196.00	\$542.80	\$21.60	\$8.60	\$573.00
2	\$357.60	\$17.20	\$17.20	\$392.00	\$1,085.60	\$43.20	\$17.20	\$1,146.00
3	\$537.40	\$25.80	\$25.80	\$589.00	\$1,628.40	\$64.80	\$25.80	\$1,719.00
4	\$716.20	\$34.40	\$34.40	\$785.00	\$2,170.20	\$86.40	\$34.40	\$2,291.00
5	\$895.00	\$43.00	\$43.00	\$981.00	\$2,713.00	\$108.00	\$43.00	\$2,864.00
6	\$1,073.80	\$51.60	\$51.60	\$1,177.00	\$3,255.80	\$129.60	\$51.60	\$3,437.00
7	\$1,252.60	\$60.20	\$60.20	\$1,373.00	\$3,798.60	\$151.20	\$60.20	\$4,010.00
8	\$1,431.40	\$68.80	\$68.80	\$1,569.00	\$4,341.40	\$172.80	\$68.80	\$4,583.00
9	\$1,611.20	\$77.40	\$77.40	\$1,766.00	\$4,884.20	\$194.40	\$77.40	\$5,156.00
10	\$1,790.00	\$86.00	\$86.00	\$1,962.00	\$5,426.00	\$216.00	\$86.00	\$5,728.00
11	\$1,789.49	\$88.31	\$90.20	\$1,968.00	\$5,426.80	\$219.00	\$90.20	\$5,736.00
12	\$1,789.98	\$90.62	\$94.40	\$1,975.00	\$5,426.60	\$222.00	\$94.40	\$5,743.00
13	\$1,789.47	\$92.93	\$98.60	\$1,981.00	\$5,426.40	\$225.00	\$98.60	\$5,750.00
14	\$1,789.96	\$95.24	\$102.80	\$1,988.00	\$5,426.20	\$228.00	\$102.80	\$5,757.00
15	\$1,789.45	\$97.55	\$107.00	\$1,994.00	\$5,426.00	\$231.00	\$107.00	\$5,764.00
16	\$1,789.94	\$99.86	\$111.20	\$2,001.00	\$5,426.80	\$234.00	\$111.20	\$5,772.00
17	\$1,789.43	\$102.17	\$115.40	\$2,007.00	\$5,426.60	\$237.00	\$115.40	\$5,779.00
18	\$1,789.92	\$104.48	\$119.60	\$2,014.00	\$5,426.40	\$240.00	\$119.60	\$5,786.00
19	\$1,977.32	\$104.48	\$119.60	\$2,201.40	\$5,990.80	\$240.00	\$119.60	\$6,350.40
20	\$2,164.72	\$104.48	\$119.60	\$2,388.80	\$6,555.20	\$240.00	\$119.60	\$6,914.80
21	\$2,352.12	\$104.48	\$119.60	\$2,576.20	\$7,119.60	\$240.00	\$119.60	\$7,479.20
22	\$2,539.52	\$104.48	\$119.60	\$2,763.60	\$7,684.00	\$240.00	\$119.60	\$8,043.60
23	\$2,726.92	\$104.48	\$119.60	\$2,951.00	\$8,248.40	\$240.00	\$119.60	\$8,608.00
24	\$2,914.32	\$104.48	\$119.60	\$3,138.40	\$8,812.80	\$240.00	\$119.60	\$9,172.40
25	\$3,101.72	\$104.48	\$119.60	\$3,325.80	\$9,377.20	\$240.00	\$119.60	\$9,736.80

Nonresident Community College Tuition: Washington vs States in our Region (Nominal Dollars)



Washington California Washington 3% Increase Washington 7% Increase Idaho Oregon National Average

Nonresident Tuition Prices vs Nonresident and International Contract Enrollment



**Washington Community Colleges
Compare Non-Resident Tuition Increases
(per quarter)**

# of Credits	FY2009-10 Non-Resident				Alternative 2010-11 Non Resident Tuition Schedules							
	Operating Fees	Building Fees	Maximum S&A Fees	Total Tuition and Fees	Option 1: Increase by Same \$ as Resident				Option 2: Increase by Same % as Resident			
					Operating Fees	Building Fees	Maximum S&A Fees	Total Tuition and Fees	Operating Fees	Building Fees	Maximum S&A Fees	Total Tuition and Fees
1	\$224	\$21	\$8	\$253.00	\$228.80	\$21.60	\$8.60	\$259.00	\$239.90	\$22.50	\$8.60	\$271.00
2	\$448	\$42	\$16	\$506.00	\$457.60	\$43.20	\$17.20	\$518.00	\$479.80	\$45.00	\$17.20	\$542.00
3	\$672	\$63	\$24	\$759.00	\$686.40	\$64.80	\$25.80	\$777.00	\$719.70	\$67.50	\$25.80	\$813.00
4	\$896	\$84	\$32	\$1,012.00	\$915.20	\$86.40	\$34.40	\$1,036.00	\$959.60	\$90.00	\$34.40	\$1,084.00
5	\$1,120	\$105	\$40	\$1,265.00	\$1,144.00	\$108.00	\$43.00	\$1,295.00	\$1,199.50	\$112.50	\$43.00	\$1,355.00
6	\$1,344	\$126	\$48	\$1,518.00	\$1,372.80	\$129.60	\$51.60	\$1,554.00	\$1,439.40	\$135.00	\$51.60	\$1,626.00
7	\$1,568	\$147	\$56	\$1,771.00	\$1,601.60	\$151.20	\$60.20	\$1,813.00	\$1,679.30	\$157.50	\$60.20	\$1,897.00
8	\$1,792	\$168	\$64	\$2,024.00	\$1,830.40	\$172.80	\$68.80	\$2,072.00	\$1,919.20	\$180.00	\$68.80	\$2,168.00
9	\$2,016	\$189	\$72	\$2,277.00	\$2,059.20	\$194.40	\$77.40	\$2,331.00	\$2,159.10	\$202.50	\$77.40	\$2,439.00
10	\$2,240	\$210	\$80	\$2,530.00	\$2,288.00	\$216.00	\$86.00	\$2,590.00	\$2,399.00	\$225.00	\$86.00	\$2,710.00
11	\$2,270	\$213	\$84	\$2,567.00	\$2,320.80	\$219.00	\$90.20	\$2,630.00	\$2,420.60	\$238.20	\$90.20	\$2,749.00
12	\$2,300	\$216	\$88	\$2,604.00	\$2,353.60	\$222.00	\$94.40	\$2,670.00	\$2,442.20	\$251.40	\$94.40	\$2,788.00
13	\$2,330	\$219	\$92	\$2,641.00	\$2,386.40	\$225.00	\$98.60	\$2,710.00	\$2,463.80	\$264.60	\$98.60	\$2,827.00
14	\$2,360	\$222	\$96	\$2,678.00	\$2,419.20	\$228.00	\$102.80	\$2,750.00	\$2,485.40	\$277.80	\$102.80	\$2,866.00
15	\$2,390	\$225	\$100	\$2,715.00	\$2,452.00	\$231.00	\$107.00	\$2,790.00	\$2,507.00	\$291.00	\$107.00	\$2,905.00
16	\$2,420	\$228	\$104	\$2,752.00	\$2,484.80	\$234.00	\$111.20	\$2,830.00	\$2,528.60	\$304.20	\$111.20	\$2,944.00
17	\$2,450	\$231	\$108	\$2,789.00	\$2,517.60	\$237.00	\$115.40	\$2,870.00	\$2,550.20	\$317.40	\$115.40	\$2,983.00
18	\$2,480	\$234	\$112	\$2,826.00	\$2,550.40	\$240.00	\$119.60	\$2,910.00	\$2,571.80	\$330.60	\$119.60	\$3,022.00
19	\$2,725	\$234	\$112	\$3,071.00	\$2,800.80	\$240.00	\$119.60	\$3,160.40	\$2,834.20	\$330.60	\$119.60	\$3,284.40
20	\$2,970	\$234	\$112	\$3,316.00	\$3,051.20	\$240.00	\$119.60	\$3,410.80	\$3,096.60	\$330.60	\$119.60	\$3,546.80
21	\$3,215	\$234	\$112	\$3,561.00	\$3,301.60	\$240.00	\$119.60	\$3,661.20	\$3,359.00	\$330.60	\$119.60	\$3,809.20
22	\$3,460	\$234	\$112	\$3,806.00	\$3,552.00	\$240.00	\$119.60	\$3,911.60	\$3,621.40	\$330.60	\$119.60	\$4,071.60
23	\$3,705	\$234	\$112	\$4,051.00	\$3,802.40	\$240.00	\$119.60	\$4,162.00	\$3,883.80	\$330.60	\$119.60	\$4,334.00
24	\$3,950	\$234	\$112	\$4,296.00	\$4,052.80	\$240.00	\$119.60	\$4,412.40	\$4,146.20	\$330.60	\$119.60	\$4,596.40
25	\$4,195	\$234	\$112	\$4,541.00	\$4,303.20	\$240.00	\$119.60	\$4,662.80	\$4,408.60	\$330.60	\$119.60	\$4,858.80

**2009-10 Tuition and Fees
Regional Universities and
Community College Upper Division Applied Bac
(Cost of 15 Credits for Three Quarters)**

	<u>Resident</u>	<u>Non-Resident</u>
Central Washington University	\$5,514	\$15,776
Eastern Washington University	\$5,340	\$14,058
The Evergreen State College	\$5,413	\$16,426
Western Washington University	\$5,397	\$16,428
Unweighted Average	\$5,416	\$15,672
Community Colleges Upper Division Applied Baccalaureates	\$5,295	\$15,225
Difference from Regional Average	\$121	\$447
	-2%	-3%

STATE OF WASHINGTON
STATE BOARD FOR COMMUNITY AND TECHNICAL COLLEGES
RESOLUTION 10-05-17

A resolution relating to 2010-11 Tuition and Fees.

WHEREAS, the Legislature adopted substantial budget reductions in state funds for the 2009-11 biennium for the community and technical colleges with the intent to backfill some of those cuts with tuition; and

WHEREAS, the Legislature's operating budget provides that resident lower division student tuition and fees may be increased by a maximum of an average of seven percent per year by the State Board for Community and Technical Colleges; and

WHEREAS, the Legislature has enacted RCW 28B.15.067 delegating authority to set tuition and fees for nonresident students to the State Board for Community and Technical Colleges; and

WHEREAS, the Legislature has enacted RCW 28B.15.069 establishing that tuition and fees for upper division courses not exceed rates at the regional universities; and

WHEREAS, the Legislature has limited increases in technical college tuition and services and activities fees to the same increases as community college operating fees.

THEREFORE BE IT RESOLVED that the State Board for Community and Technical Colleges:

Adopts the community college lower division course tuition and fee schedule and rates for 2010-11 as set forth in Attachment A;

Limits the maximum increase in technical college tuition and S&A fees for 2010-11 to seven percent as set forth in Attachment A;

Adopts the community college upper division course tuition and fee schedule and rates for 2010-11 as set forth in Attachment A.

BE IT FURTHER RESOLVED, that the State Board for Community and Technical Colleges authorizes the Executive Director to make adjustments, as necessary, to correct computational errors.

APPROVED AND ADOPTED on May 6, 2010.

J.A. Bricker, Chair

ATTEST:

Charles N. Earl, Secretary



REGULAR MEETING AGENDA ITEM

May 6, 2010

TAB 5

Discussion Action (Resolution 10-05-18)

Topic

FY 2011 Operating Budget Allocations

Description

The 2010 supplemental operating budget has been delivered to the Governor for signature. If no vetoes are made by the Governor, the budget appropriates to the SBCTC a total of \$695,750,000 in operating funds for fiscal year 2011. The total consists of \$629,745,000 in state general funds, \$47,449,000 from the Education Legacy Trust Account, and \$18,556,000 from the Opportunity Express Account. The FY 2011 appropriation includes a \$44.8 million base funding reduction, of which \$7.1 million is a one-time reduction associated with ESSB 6503, the "furlough bill." The remaining \$37.7 million budget reduction is considered permanent. In addition, the budget includes a one-time shift of funding for maintenance and operations from the capital to operating budget in the amount of \$11.4 million.

Key Considerations

- The Board is asked to adopt an initial allocation that distributes \$675,506,805 to college districts and State Board offices and to delegate authority to the Executive Director to approve future allocations of \$20,243,195.
- The Board is asked to earmark \$39,062,535 in funding for certain specified uses.

Analysis

FY 2011 Budget Changes

The Legislature faced a \$9 billion revenue shortfall as it built the 2009-11 operating budget. They addressed the shortfall through spending reductions, fund balance transfers, and one-time federal stimulus funds. The Legislature faced an additional \$2.8 billion budget gap as they wrote the 2010 supplemental operating budget. As a result of the state budget shortfall, the Legislature reduced state funding for the community and technical colleges by \$82 million (11%) in the original 2009-11 operating budget on an annual basis, and by an additional \$44.8 million in FY 2011 in the 2010 supplemental budget.

Of the total budget reduction, \$7.1 million is the result of implementing Engrossed Substitute Senate Bill 6503 which imposes a one-time reduction to compensation. The remaining \$37.7 million is a permanent reduction to the community and technical college system's base operating budget.

In addition to budget reductions, the legislature provided a limited amount of new funding in FY 2011:

- **Worker Retraining:** \$17.556 million is provided in FY 2011 for an additional 3,784 Worker Retraining FTES.
- **Opportunity Grants:** \$1 million per year is provided to enhance the Opportunity Grant Program.
- **Aerospace Training Center:** \$1.75 million per year is provided to the State Board for Community and Technical Colleges to contract with the Aerospace Training and Research Center on Paine Field in Snohomish County to support industry-identified training in the aerospace sector.
- **Labor Education and Research Center:** \$164,000 is provided for the Labor Education and Research Center which is transferred from The Evergreen State College to South Seattle Community College. The Center provides outreach programs and direct education and research services to labor unions and worker-centered organizations.
- **BS in Nursing/University Center:** \$158,000 is provided to implement House Bill 2694. The University Center at Everett Community College, in partnership with the University of Washington-Bothell, must offer a Bachelor of Science in Nursing program for 25 FTES in FY 2011.
- **Maintenance and Operations:** \$513,000 is provided for M&O on North Seattle Community College's Employment Resource Center and Green River Community College's Kent Station II; and property insurance for Green River Community College's Humanities Building.

Earmarks and Provisos (See Attachment B, Earmarks and Provisos)

For FY 2010, the State Board earmarked certain funds, requiring that the colleges use them for specified purposes only. Earmarks express system and Board priorities and ensure that recent commitments made to the legislature are honored. State Board staff recommends the Board continue FY 2010 earmarks in FY 2011, as identified in Attachment B.

Allocations

The initial allocation for Fiscal Year 2011 consists of adjustments to current year funding (removing one-time and variable funding and annualizing items funded for less than 12 months in FY 2010), adding additional funds provided for by the Legislature for specific purposes and distributing budget reductions to college districts and State Board offices. Budget reductions are allocated based on each district's proportionate share of state allocations, excluding provisoed and earmarked funds.

(See **Attachment C, FY 2011 Initial Allocation**; **Attachment D, FY 2011 Initial Allocation Descriptions**; and **Attachment E, FY 2011 Use of Funds**.)

Future Allocations

The following budget items require additional information and will be allocated throughout the fiscal year:

- **Aerospace Apprenticeship** – \$2.8 million will be allocated in consultation with the Aerospace Joint Apprenticeship Committee. College apprenticeship program development and anticipated capacity will be considered in allocation decisions.
- **Basic Skills Enhancement** – \$3.4 million will be allocated in July based on the most recent four quarter average Basic Skills FTES enrollments, excluding Sheltered Workshops.
- **Centers of Excellence** – \$550,000 will be allocated based on performance agreements with the State Board office.
- **Facilities Maintenance and Operations** – \$1.2 million will be allocated throughout the year based on actual substantial completion dates of new buildings.
- **Hospital Employee Education & Training (HEET)** – \$2.2 million will be allocated based on a competitive application process.
- **Student Achievement** – \$1 million will be allocated next fall based on net gain in student achievement points earned in the 2009-10 academic year compared to 2008-09.
- **Workforce Development Projects** – \$537,541 will be allocated throughout the year for targeted workforce development initiatives.

Background Information

Attachment A: 2009-11 Biennium Source of Funds

Attachment B: SBCTC Earmarks and Provisos

Attachment C: FY 2011 Initial Allocations

Attachment D: FY 2011 Initial Allocation Descriptions

Attachment E: FY 2011 Use of Funds

Attachment F: FY 2011 Enrollment Rules

Attachment G: FY 2010 and FY 2011 Increments and Turnover Savings

Recommendation/Outcomes

The Board is asked to approve the allocation of funds to the college districts and to State Board office and programs, and to delegate authority to the Executive Director to approve future allocations as described in Resolution 10-05-18.

Prepared by: Denise Graham, (360) 704-4350, dgraham@sbctc.edu

STATE OF WASHINGTON
STATE BOARD FOR COMMUNITY AND TECHNICAL COLLEGES
RESOLUTION 10-05-18

A resolution relating to the 2009-11 operating budget.

WHEREAS the 2010 supplemental operating budget has been passed by the Legislature appropriating funds for the Community and Technical Colleges for the 2009-11 biennium; and

WHEREAS the State Board has the authority to award and allocate appropriated federal funds, state general funds, Education Legacy Trust Account, and Opportunity Express Account; and

WHEREAS the funds appropriated to the State Board for Community and Technical Colleges in the 2010 supplemental appropriations act for fiscal year 2011 includes General Fund-State of \$629,745,000, Education Legacy Trust Account of \$47,449,000, and Opportunity Express Account of \$18,556,000 as displayed on Attachment A – Source of Funds Statement;

NOW THEREFORE BE IT RESOLVED that the State Board for Community and Technical Colleges:

1. Approves the FY 2011 initial allocation of operating funds totaling \$675,506,805 as displayed on Attachment C – Initial Allocations;
2. Authorizes the Executive Director to allocate an additional \$20,243,195 throughout the year for items found in Section 4 of Attachment E – Use of Funds; and
3. Requires allocations for the following be spent only for those purposes: Aerospace Apprenticeships, Applied Baccalaureates, Basic Skills Enhancement, Centers of Excellence, Disability Accommodations, Employment Resource Center, Gateway Center, Hospital Employee Education & Training, University Center of North Puget Sound, Opportunity Grants, Students of Color, University Contracts, Worker Retraining, Workforce Development Projects, and Workplace-Based Instructional Programs.

BE IT FURTHER RESOLVED that the State Board for Community and Technical Colleges authorizes the Executive Director to make adjustments, as necessary, for actions taken by the Governor, computational errors, data corrections, externally imposed restrictions or guidelines, legislative provisos, restrictions, guidelines, uniform accounting and reporting requirements, and unanticipated changes in state or federal funding.

APPROVED AND ADOPTED May 6, 2010.

 J.A. Bricker, Chair

ATTEST:

 Charles N. Earl, Secretary

Attachment A
Washington State Community and Technical Colleges
2009-11 Biennium Source of Funds

	2009-10	2010-11	BIENNIUM
<u>APPROPRIATED FUNDS</u>			
I. 2009-11 APPROPRIATIONS			
General Fund-State, 001			
Funds not Provisoed	584,054,000	578,922,000	1,162,976,000
Aerospace Training Center	0	1,750,000	1,750,000
BS in Nursing/University Center	0	158,000	158,000
Health Employee Education & Training	2,250,000	2,250,000	4,500,000
Job Skills Program	2,725,000	2,725,000	5,450,000
Labor Education & Research Center	0	164,000	164,000
Maintenance Fund Shift from Capital	11,400,000	11,400,000	22,800,000
Student Achievement Initiative	1,250,000	2,250,000	3,500,000
Technology Transformation	1,112,000	1,113,000	2,225,000
University Contracts	252,000	252,000	504,000
Worker Retraining	28,761,000	28,761,000	57,522,000
Total General Fund-State	631,804,000	629,745,000	1,261,549,000
General Fund-Federal, 001			
Funds not Provisoed	17,171,000	0	17,171,000
Education Legacy Trust Account, 08A			
Funds not Provisoed	47,586,000	47,449,000	95,035,000
Total Education Legacy Trust Account	47,586,000	47,449,000	95,035,000
Opportunity Express Account, OEA			
Opportunity Grants	0	1,000,000	1,000,000
Worker Retraining	0	17,556,000	17,556,000
Total Education Legacy Trust Account	0	18,556,000	18,556,000
TOTAL 2009-11 AVAILABLE FOR ALLOCATION	696,561,000	695,750,000	1,392,311,000
<u>NONAPPROPRIATED FUNDS</u>			
II. EMPLOYMENT TRAINING FINANCE ACCOUNT, 11A			
Customized Workforce Training			175,000 *
III. GRANTS/CONTRACTS, 145			
			377,051,000 *
IV. DEDICATED LOCAL, 148			
			197,996,000 *
V. OPERATING FEES, 149			
			535,267,000 *
VI. SAVINGS INCENTIVE PROGRAM, 976			
			0 *
VII. DATA PROCESSING, 443			
			8,155,000 *
TOTAL 2009-11 NON-APPROPRIATED	0	0	1,118,644,000
2009-11 CTC SYSTEM OPERATING TOTAL	696,561,000	695,750,000	2,510,955,000

* Biennial Appropriation

Attachment B
Washington State Community and Technical Colleges
FY 2011 Board Earmarks and Legislative Provisos

FY 2011 Earmarks

1 Aerospace Apprenticeships	\$3,000,000
2 Applied Baccalaureates	1,764,000
3 Basic Skills Enhancement	3,469,574
4 Centers of Excellence	1,870,000
5 Disability Accomodations	1,919,720
6 Employment Resource Center	1,178,000
7 Gateway Center	75,000
8 Hospital Employee Education & Training	2,250,000
9 University Center of North Puget Sound	1,795,500
10 Opportunity Grants	12,500,000
11 Students of Color	1,115,600
12 University Contracts	1,039,500
13 Worker Retraining Earmarks	6,498,100
14 Workforce Development Projects	537,541
15 Workplace-Based Instructional Programs	<u>50,000</u>
Total Earmarks	\$39,062,535

FY 2011 Provisos

1 Aerospace Training Center	\$1,750,000
2 BS in Nursing / University Center	\$158,000
3 Job Skills Program	\$2,725,000
4 Labor Education & Research Center	164,000
5 Opportunity Grants Proviso	1,000,000
6 Technology Transformation	1,113,000
7 Worker Retraining Proviso	<u>46,317,000</u>
Total Provisos	\$53,227,000

Attachment C
Washington State Community and Technical Colleges
Draft FY 2011 Initial Allocation
Step 4: New Proviso and Variable Allocations

	(23)	(24)	(25)	(26)	(27)	(28)	(29)	(30)	(31)	(32)
Districts	Subtotal FY 2011 Initial Allocations	New Facilities M&O	New Worker Retraining Variable	Aerospace Training Center	Labor Education & Research Center	BS in Nursing/ University Center	New Opportunity Grants	FY 2011 Compensation Reductions	General Budget Reduction	Total FY 2011 Initial Allocation
Bates	22,575,453	-	806,925	-	-	-	22,500	(224,841)	(1,251,303)	21,928,734
Bellevue	33,662,536	-	903,756	-	-	-	30,600	(343,574)	(1,912,090)	32,341,228
Bellingham	10,638,386	-	212,106	-	-	-	30,150	(108,139)	(601,826)	10,170,677
Big Bend	10,652,790	-	96,831	-	-	-	34,650	(108,836)	(605,702)	10,069,733
Cascadia	10,573,202	-	82,998	-	-	-	-	(111,056)	(618,061)	9,927,083
Centralia	12,548,493	-	239,772	-	-	-	29,700	(124,692)	(693,945)	11,999,328
Clark	31,670,938	-	608,652	-	-	-	22,500	(333,962)	(1,858,597)	30,109,531
Clover Park	19,970,417	-	627,096	-	-	-	36,000	(201,015)	(1,118,704)	19,313,794
Columbia Basin	22,190,708	-	373,491	-	-	-	22,500	(223,011)	(1,241,121)	21,122,567
Edmonds	27,236,818	-	516,432	-	-	-	36,900	(263,681)	(1,467,464)	26,059,005
Everett	25,850,120	-	442,656	-	-	158,000	25,650	(251,218)	(1,398,099)	24,827,109
Grays Harbor	10,573,479	-	276,660	-	-	-	23,850	(102,444)	(570,129)	10,201,416
Green River	26,724,470	304,000	1,166,583	-	-	-	28,350	(266,983)	(1,485,836)	26,470,584
Highline	26,343,426	-	871,479	-	-	-	36,900	(265,888)	(1,479,743)	25,506,174
Lake Washington	14,881,678	-	571,764	-	-	-	22,500	(147,947)	(823,370)	14,504,625
Lower Columbia	13,692,435	-	198,273	-	-	-	24,750	(143,544)	(798,862)	12,973,052
Olympic	22,282,832	-	382,713	-	-	-	27,000	(224,678)	(1,250,398)	21,217,469
Peninsula	11,311,125	-	262,827	-	-	-	31,950	(106,184)	(590,945)	10,908,773
Pierce	27,135,133	-	493,377	-	-	-	55,350	(271,792)	(1,512,600)	25,899,468
Renton	18,281,404	-	502,599	-	-	-	22,500	(182,014)	(1,012,962)	17,611,527
Seattle	71,548,035	-	2,794,266	-	164,000	-	82,800	(720,025)	(4,007,146)	69,861,930
Shoreline	23,507,000	-	617,874	-	-	-	36,000	(241,598)	(1,344,564)	22,574,712
Skagit Valley	19,135,321	-	248,994	-	-	-	22,500	(198,717)	(1,105,919)	18,102,179
South Puget Sound	17,251,148	-	184,440	-	-	-	22,500	(181,400)	(1,009,543)	16,267,145
Spokane	61,021,464	-	806,925	-	-	-	48,150	(647,387)	(3,602,898)	57,626,254
Tacoma	21,967,381	-	387,324	-	-	-	22,500	(225,298)	(1,253,850)	20,898,057
Walla Walla	17,341,143	-	428,823	-	-	-	36,900	(167,407)	(931,671)	16,707,788
Wenatchee Valley	13,587,322	-	253,605	-	-	-	22,500	(138,390)	(770,182)	12,954,855
Whatcom	13,153,389	-	119,886	-	-	-	22,500	(138,747)	(772,170)	12,384,858
Yakima Valley	20,163,304	-	221,328	-	-	-	31,500	(209,995)	(1,168,685)	19,037,452
District Subtotal	677,471,350	304,000	15,700,455	-	164,000	158,000	912,150	(6,874,463)	(38,258,385)	649,577,107
SBCTC Olympia	14,551,555	-	1,644,548	1,750,000	-	-	40,000	(80,679)	(449,002)	17,456,422
SBCTC Bellevue	9,122,293	-	-	-	-	-	-	(98,858)	(550,159)	8,473,276
Allocation Total	701,145,198	304,000	17,345,003	1,750,000	164,000	158,000	952,150	(7,054,000)	(39,257,546)	675,506,805
Future Allocations	17,234,102	1,239,700	210,997	-	-	-	47,850	-	1,510,546	20,243,195
System Total	718,379,300	1,543,700	17,556,000	1,750,000	164,000	158,000	1,000,000	(7,054,000)	(37,747,000)	695,750,000

Attachment D
Washington State Community and Technical Colleges
FY 2011 Initial Allocation Descriptions

Base Budgets (Columns 1 - 13)

The FY 2011 operating base budgets are calculated by adjusting the current FY 2010 allocations as follows:

- Remove variable and one-time allocations; and
- Annualize funds not provided for a full 12 Months in FY 2010.

Included in base budgets are the following funds earmarked for specific purposes: Aerospace Apprenticeship, Applied Baccalaureates, Centers of Excellence, Disability Accommodations, Employment Resource Center (Edmonds Community College), Gateway Center (Highline Community College), Job Skills Program, Opportunity Grants, Students of Color, Technology Transformation, University Center of North Puget Sound (UCNPS), University Contracts, Worker Retraining, Workforce Development, and Workplace-Based Instructional Programs (Renton Technical College).

Changes to the Base Budget (Columns 14 – 21)

- **Applied Baccalaureates** (Column 14) – Funding is distributed for the second cohort of 20 student FTES to each of the three sites that first enrolled students in FY 2010.
- **Life Transitions Program** (Column 15) – The purpose of these funds is to provide necessary training opportunities and services to displaced homemakers to assist them in acquiring the skills necessary for gainful employment or further education to become self-sufficient. These services may include direct instructional services or referrals such as: job counseling, job training, and job placement services; health counseling; financial management training; education activities; transition and retention activities; and assistance in accessing local support services.

These funds are allocated to the current eligible colleges as permanent, ongoing funding and will be added to base budgets. All ongoing enrollment and reporting obligations will reside with the college/program as required by their institution. Colleges will no longer be required to report into the Life Transitions State Board database. However, the State Board will require an annual year-end report from colleges describing their strategies, successes and challenges in providing services to the displaced homemaker population.

- **Health Insurance Rate Increase** (Column 16) – Funding is provided to reflect the increase in employer-paid health premiums from \$745 per employee per month in FY 2010 to \$850 per employee per month in FY 2011. Funding is prorated and allocated based on the most recent state-funded health benefit eligible headcount by district.
- **PERS Rate Adjustment** (Column 17) – Funding is provided for a FY 2010 adjustment to employer funding rates for the Public Employees' Retirement System (PERS).
- **Maintenance Fund Shift from Capital** (Column 18) – Funding for maintenance and operations is shifted from the capital budget to operating. Allocations are based on M&O capital allocations for 2009-11.

- **Technology Transformation** (Column 19) – Additional funds are provided by the Legislature, for a total of \$1.113 million, to enhance distance learning and open courseware technology. These funds are allocated to SBCTC to expend on system wide technology solutions.
- **Financial Aid System Management** (Column 20) – Beginning July 1, 2010, SBCTC will be responsible for the ongoing maintenance, technical support and the recurring development and incorporation of federal and state mandated financial aid changes that are currently managed by Regent Education. The cost of maintaining the Financial Aid System is spread to each district based on proportionate share of state appropriations.
- **For the Student Achievement Pool** (Column 21) – The 2009-11 biennial budget requires \$3.5 million of current appropriations to be redirected toward the Student Achievement Initiative in the 2009-11 biennium. In FY 2011, \$1 million is shifted from base budgets to reserves to be reallocated in a future allocation based on net gain in student achievement points earned in the 2009-10 academic year compared to 2008-09.

New and Variable Allocations (Columns 23 – 30)

- **New Facilities M&O** (Column 23) – Funding is provided by the Legislature for new square footage added in 2009-11. Allocations will be made based on the actual substantial completion date of each facility.
- **New Worker Retraining Variable** (Column 24) – Funding is provided by the Legislature for an additional 3,784 Worker Retraining FTES. This funding is provided on a one-time basis and will be removed from the community and technical colleges' appropriations in the 2011-13 budget.
- **Aerospace Training Center** (Column 25) – Funding is provided by the Legislature for the State Board for Community and Technical Colleges to contract with the Aerospace Training and Research Center on Paine Field in Snohomish County to support industry-identified training in the aerospace sector.
- **Labor Education & Research Center** (Column 26) – Funding is provided by the Legislature for the Labor Education and Research Center which is transferred from The Evergreen State College to South Seattle Community College. The Center provides outreach programs and direct educational and research services to labor unions and worker-centered organizations.
- **BS in Nursing/University Center** (Column 27) – Funding is provided by the Legislature to implement House Bill 2694 (regarding a bachelor of science in nursing program at the university center). The University Center at Everett Community College, in partnership with the University of Washington, Bothell must offer a bachelor of science in nursing program for 25 FTES in FY 2011.
- **New Opportunity Grants** (Column 28) – New funding is provided by the Legislature from the Opportunity Express Account for the Opportunity Grant Program.
- **FY 2011 Compensation Reductions** (Column 29) – The Legislature reduced state appropriations consistent with Engrossed Substitute Senate Bill 6503 (closing state agencies on specified dates) which requires a one-time reduction in compensation to be taken in FY 2011.

- **General Budget Reduction** (Column 30) – The Legislature reduced funding by \$37.7 million, or approximately 5.5%, from the level originally budgeted for FY 2011.

Future Allocations in FY 2011

- **Aerospace Apprenticeship** – \$2,819,404 will be allocated in FY 2011 in consultation with the Aerospace Joint Apprenticeship Committee. College apprenticeship program development and anticipated capacity will be considered in allocation decisions.
- **Basic Skills Enhancement** – \$3,469,574 will be allocated in July based on each district's most recent four quarter Basic Skills FTES enrollments, excluding Sheltered Workshops.
- **Centers of Excellence** – \$550,000 will be allocated based on performance agreements with the State Board Office.
- **Facilities Maintenance and Operations** – \$1.2 million will be allocated throughout the year based on actual substantial completion dates of new buildings.
- **Hospital Employee Education & Training** – \$2,247,000 will be allocated based on a competitive application process.
- **Revolving Funds** – \$6,598,051 will be allocated at the end of the year based on use of central service agency services.
- **Student Achievement** – \$1 million will be allocated next fall based on net gain in student achievement points earned in the 2009-10 academic year compared to 2008-09.
- **Workforce Development Projects** – \$537,541 will be allocated throughout the year for targeted workforce development initiatives.

Attachment E
Washington State Community and Technical Colleges
FY 2011 Use of Funds Statement

	GENERAL FUND- STATE	EDUCATION LEGACY TRUST ACCOUNT	OPPORTUNITY EXPRESS ACCOUNT	TOTAL STATE FUNDS
1. DISTRICT ALLOCATIONS				
Unrestricted Base	554,476,657	34,573,739	-	589,050,396
Earmarks and Provisos in Base:				
Aerospace Apprenticeships	174,096	-	-	174,096
Applied Baccalaureates	1,638,000	126,000	-	1,764,000
BS in Nursing/University Center	158,000	-	-	158,000
Centers of Excellence	1,320,000	-	-	1,320,000
Disability Accommodations	1,919,720	-	-	1,919,720
Employment Resource Center	1,178,000	-	-	1,178,000
Gateway Center	75,000	-	-	75,000
Labor Education & Research Center	164,000	-	-	164,000
Maintenance Fund Shift from Capital	11,400,000	-	-	11,400,000
UCNPS	443,750	1,351,750	-	1,795,500
Opportunity Grants	5,000,000	6,624,000	1,000,000	12,624,000
Students of Color	1,115,600	-	-	1,115,600
University Contracts	67,450	972,050	-	1,039,500
Worker Retraining Base	24,369,135	-	-	24,369,135
Worker Retraining Variable	8,883,843	-	15,700,455	24,584,298
Workplace-Based Instructional Programs	50,000	-	-	50,000
Funds Added to Base:				
Health Insurance Rate Increase	22,077,840	-	-	22,077,840
PERS Rate Adjustment	35,220	-	-	35,220
Financial Aid Management System	(150,000)	-	-	(150,000)
For the Student Achievement Pool	(1,000,000)	-	-	(1,000,000)
Facilities M&O	1,053,500	-	-	1,053,500
FY 2011 Compensation Reductions	(6,874,463)	-	-	(6,874,463)
General Budget Reduction	(38,258,385)	-	-	(38,258,385)
TOTAL DISTRICT ALLOCATIONS	589,316,963	43,647,539	16,700,455	649,664,957
2. SBCTC - OLYMPIA				
<i>SBCTC Admin</i>				
Unrestricted Base	6,135,162	765,000	-	6,900,162
Earmarks and Provisos Included in Base:				
Job Skills Program	50,000	-	-	50,000
Opportunity Grants	-	115,000	-	115,000
Worker Retraining Base (Admin)	398,230	-	198,284	596,514
Funds Added to Base:				
Health Insurance Rate Increase	168,238	-	-	168,238
PERS Rate Adjustment	630	-	-	630
FY 2011 Compensation Reductions	(80,679)	-	-	(80,679)
General Budget Reduction	(449,002)	-	-	(449,002)
<i>Subtotal SBCTC Admin</i>	<i>6,222,579</i>	<i>880,000</i>	<i>198,284</i>	<i>7,300,863</i>

	GENERAL FUND- STATE	EDUCATION LEGACY TRUST ACCOUNT	OPPORTUNITY EXPRESS ACCOUNT	TOTAL STATE FUNDS
<i>SBCTC Program</i>				
Aerospace Training Center	1,750,000	-	-	1,750,000
Life Transitions Program	56,264	-	-	56,264
DOC Compensation	658,700	-	-	658,700
Enrollments - ABE	189,931	-	-	189,931
Job Skills Program	2,675,000	-	-	2,675,000
Opportunity Grants	-	700,000	-	700,000
Technology Transformation	1,113,000	-	-	1,113,000
Worker Retraining Variable (PCS)	-	-	1,446,264	1,446,264
Worker Retraining Base (PCS)	1,526,400	-	-	1,526,400
<i>Subtotal SBCTC Program</i>	<i>7,969,295</i>	<i>700,000</i>	<i>1,446,264</i>	<i>10,115,559</i>
TOTAL SBCTC - OLYMPIA ALLOCATIONS	14,191,874	1,580,000	1,644,548	17,416,422
3. SBCTC - BELLEVUE				
Unrestricted Base	8,593,260	250,461	-	8,843,721
Unrestricted Base (earmarked funds)	6,500	-	-	6,500
Funds Added to Base:				
Health Insurance Rate Increase	120,922	-	-	120,922
PERS Rate Adjustment	1,150	-	-	1,150
Financial Aid Management System	150,000	-	-	150,000
FY 2011 Compensation Reductions	(8,858)	(90,000)	-	(98,858)
General Budget Reduction	(550,159)	-	-	(550,159)
TOTAL SBCTC - BELLEVUE ALLOCATIONS	8,312,815	160,461	-	8,473,276
4. FUTURE ALLOCATIONS				
Aerospace Apprenticeships	2,819,404	-	-	2,819,404
Basic Skills Enhancement	1,469,574	2,000,000	-	3,469,574
Centers of Excellence	550,000	-	-	550,000
Facilities Maintenance & Operations	2,072,446	-	-	2,072,446
Hospital Employee Education & Training	2,247,500	-	-	2,247,500
Opportunity Grants	-	61,000	-	61,000
Revolving Funds	6,598,051	-	-	6,598,051
Student Achievement Initiative	1,000,000	-	-	1,000,000
Worker Retraining Variable	81,492	-	210,997	292,489
Workforce Development Projects	537,541	-	-	537,541
<i>Future Allocations Subtotal</i>	<i>17,376,008</i>	<i>2,061,000</i>	<i>210,997</i>	<i>19,648,005</i>
RESERVES				
Ongoing Reserves	547,340	-	-	547,340
<i>Reserves Subtotal</i>	<i>547,340</i>	<i>-</i>	<i>-</i>	<i>547,340</i>
TOTAL FUTURE ALLOCATIONS AND RESERVES	17,923,348	2,061,000	210,997	20,195,345
Total Use of Funds FY 2011	629,745,000	47,449,000	18,556,000	695,750,000

**State Board for Community and Technical Colleges
State Enrollment Rules for FY 2011**

All Allocated State Enrollment

The following rules apply to enrollments allocated by the State Board:

1. A college district will be eligible to receive general growth enrollments if the district's prior two year average actual enrollment was at least 100 percent of its prior two year average allocated enrollment.
2. A district will be in enrollment recovery status if its prior two year average actual enrollment is less than 96 percent of its prior two year average allocated enrollment.
3. If, in the enrollment recovery year, a district's actual enrollments are less than 96 percent of its allocated enrollments, the district's allocated enrollments and associated funding will be reduced by the difference between the prior year's actual enrollment and 96 percent of the prior year's allocated enrollments.
4. Actual enrollments above 100 percent of a district's current year allocated enrollment will be counted as excess enrollments.

Worker Retraining Enrollment

In addition to the rules above, the following rule applies to worker retraining enrollment allocations: College districts that fail to meet 100 percent of their worker retraining enrollment allocation for two consecutive years will have their worker retraining enrollment allocation and associated funding in the subsequent year reduced by 75 percent of the difference between the allocated and actual enrollment in the second year.

Earmarked Enrollments

The funding for the following types of enrollments has been earmarked by the State Board and must be spent on these programs:

- Aerospace Apprenticeships
- Health Employee Education and Training
- University Center of North Puget Sound
- University Contracts
- Applied Baccalaureate Programs

Actual enrollments in earmarked programs will be tracked against allocated enrollments and will be reviewed by the Board quarterly. Districts are expected to enroll at allocated enrollment levels. Colleges under-enrolled in an earmarked program may be subject to a reduction in earmarked enrollments and associated funding.

Other Monitored Enrollments

Districts are expected to maintain strong commitment to the following types of enrollments:

- Adult Basic Education
- Apprenticeships
- Early Childhood Education
- I-BEST
- Transfer High Demand
- Workforce High Demand

Actual enrollments will be compared to prior year actual and allocated enrollments and will be reviewed by the Board quarterly. Districts are expected to enroll at allocated enrollment levels. Colleges under-enrolled in a monitored enrollment type may be subject to a reduction in enrollments and associated funding.

Attachment G
Washington State Community and Technical Colleges
FY 2010 and FY 2011 Faculty Increments and Turnover Savings

Provisions of the 2009-11 Omnibus Appropriations Act

The 2010 Supplemental Operating budget allows, but does not require, the use of turnover savings for payment of faculty increments¹. The appropriations act limits the source of funds for the payment of faculty increments to salary and benefit savings from faculty and turnover. No other funds may be used to pay faculty increments.

Definition and Calculation of Turnover Savings

Turnover savings are defined as the ongoing (permanent)² difference between the compensation level of a faculty employee who is no longer employed and the compensation level of the faculty replacement. In addition, districts may identify and subtract one-time faculty buyout costs in calculating the amount of turnover savings available for increment funding. The determination of whether to use turnover savings for the payment of faculty increments and the identification of buyout costs is made by each college.

If a college pays part-time faculty a flat rate, there may be no part-time faculty turnover savings because new part-time faculty may be paid at the same rate as the part-time faculty being replaced.

Turnover Savings – Type of employee³

If turnover savings are used to fund increments, only turnover savings attributable to full-time faculty may be used for payment of increments to full-time faculty. Similarly, only turnover savings attributable to part-time faculty may be used for payment of increments to part-time faculty.

Turnover Savings – Fund Sources

Turnover savings generated in state funds may be used only for payment to faculty whose salaries are paid by state funds. Similarly, turnover savings in local funds may only be used to pay increments to faculty whose salaries are paid by those local funds. Districts may carry forward turnover savings from local funds across fiscal years.

¹ The payment of increments includes the payment of associated benefit costs. Whenever the term “increment” is used in these rules, the term is defined to include “and associated benefits”.

² Because turnover savings are defined as permanent savings, they do not include temporary savings that may be realized from such situations as:

- ◆ Vacant positions
- ◆ Temporary savings from faculty on leave, reassignment, or sabbatical
- ◆ Savings resulting from reductions in force
- ◆ Stipend pay
- ◆ Moonlight pay

³ Only faculty turnover savings may be used to pay faculty increments. Turnover savings from other employee groups – such as classified, exempt etc. – may not be used to pay faculty increments.



REGULAR MEETING AGENDA ITEM

May 6, 2010

TAB 6

Discussion Action (Resolution 10-05-19)

Topic

2010-11 Capital Budget Allocations

Description

The 2010 Supplemental Capital Budget makes several changes to the 2009-11 Biennial Capital Budget. These changes need to be accounted for in the allocations to colleges. This resolution will adopt the necessary changes.

Key Consideration

- The Board is asked to allocate new appropriations and reduce existing appropriations consistent with the 2010 Supplemental Capital Budget.

Analysis

The legislature took the following actions (See Attachments A, B, C and D):

- Shifted the funding for the design costs associated with construction administration into the period when construction will be funded. This reduces the State's bond obligations in the current biennium.
- Reduced construction funding for several construction projects that have already been bid. This reduction is the difference between the engineer's estimate prior to bid and the bid amount initially awarded. This also reduces the State's bond obligations in the current biennium.
- Provided funding for the remainder of the construction of the Pierce College Fort Steilacoom Cascade Core project using the Building Fee account. The legislature also increased funding for Roof Repairs "A" and Minor Works – Preservation (RMI) to the amounts requested for the biennium using the Building Fee account.
- Provided funding for the emergency repairs of the Seattle Central Charles Mitchell Building and the Clover Park Building 14, also using the Building Fee account.
- Provided appropriations from the Building Fee account to pay the debt service on the Certificates of Participations (COPs) for Green River Humanities and Classroom Building and Bellingham Instructional Resource Center projects. These COPs were authorized in the biennial budget but without appropriations to pay for them.

- Eliminated the use of the Building Fee account to pay for the Preventative Facility Maintenance and Building System Repair project authorized in the biennial budget. Instead, this work is paid for from the general fund in the 2010 Supplemental Operating Budget.
- Changed the source of funds used on several projects with no net change in total funding.

Background Information

- Attachment A – Summary of 2010 Supplemental Changes to the Enacted Budget
- Attachment B – Revised 2009-11 Minor Works – Preservation (RMI) Allocations
- Attachment C – Revised 2009-11 Roof Repairs “A” Allocations
- Attachment D – Revised 2009-11 Minor Works Allocations

Recommendation/Outcomes

The State Board staff recommends the Board adopt Resolution 10-05-19, approving the 2010-11 Capital Budget Allocations.

Prepared by: Wayne Doty, 360-704-4382, wdoty@sbctc.edu

STATE OF WASHINGTON
STATE BOARD FOR COMMUNITY AND TECHNICAL COLLEGES
RESOLUTION 10-05-19

A resolution relating to the 2009-11 capital budget.

WHEREAS the 2010 supplemental capital budget has been passed by the Legislature appropriating funds for the Community and Technical Colleges for the 2009-11 biennium; and

WHEREAS the State Board has the authority to award and allocate appropriated state funds; and

WHEREAS the funds appropriated to the State Board for Community and Technical Colleges in the 2010 supplemental appropriations act includes both new and reduction to existing state funds for the 2009-11 biennium as displayed on Attachment A – Summary of 2010 Supplemental Changes to the Enacted Budget;

NOW THEREFORE BE IT RESOLVED that the State Board for Community and Technical Colleges:

Approves the revised 2009-11 funding allocation of capital funds totaling \$479,182,482 as displayed on Attachment A – Summary of 2010 Supplemental Changes to the Enacted Budget with details as displayed on Attachment B – Revised 2009-11 Minor Works – Preservation (RMI) Allocations, Attachment C – Revised 2009-11 Roof Repairs “A” Allocations, and Attachment D – Revised 2009-11 Minor Works Allocations Attachment.

BE IT FURTHER RESOLVED that the State Board for Community and Technical Colleges authorizes the Executive Director to make adjustments, as necessary, for actions taken by the Governor, computational errors, data corrections, externally imposed restrictions or guidelines, legislative provisos, restrictions, guidelines, uniform accounting and reporting requirements, and unanticipated changes in state or federal funding.

APPROVED AND ADOPTED on May 6, 2010.

J.A. Bricker, Chair

ATTEST:

Charles N. Earl, Secretary

**State Board For Community And Technical Colleges
2010 Supplemental Capital Budget Allocations
(April 27, 2010)**

	Number	2009-11 Biennial Budget		Transfers Btwn Projects	2010 Supplemental	2009-11 Total	Notes
		Reappropriation	New				
Major Projects							
Bates Technical College: Mohler Communic	20082703	3,150	1,755,000		(563,000)	1,195,150	(1)
Bellevue Community College: L Building E	20081850	1,460,000	0		(1,073,000)	387,000	(2)
Bellevue Community College: Science and	20042690	147,651	0			147,651	
Bellevue Community College-Health Science	20082702	0	4,350,000		(1,440,000)	2,910,000	(1)
Bellingham Technical College: Welding/A	20041213	1	0			1	
Bellingham Technical College: Fisheries	30000117	0	4,466,000			4,466,000	
Bellingham Technical College: Instructio	20081223	426,488	0		2,288,000	2,714,488	(3)
Cascadia: Center for Arts, Technology, C	20042693	12,887,657	0			12,887,657	
Centralia Community College: Health and	20082414	5,000	0			5,000	
Centralia Community College: Science Bui	20042850	1,559,096	0		(263,000)	1,296,096	(4)
Clark College: Child and Family Studies	20082417	962,093	0			962,093	
Clark College: Health and Advanced Tech	20082705	0	2,506,000		(182,000)	2,324,000	(1)
Clark College: East County Satellite	20041689	2,919,975	0		(220,000)	2,699,975	(4)
Clover Park Technical College: Allied He	20062699	898,857	0		(697,000)	201,857	(1)
Columbia Basin College: Business Educati	20081315	39,120	0			39,120	
Columbia Basin College: Social Science C	20082704	24,966	0			24,966	
Columbia Basin College: Tri-Cities STEM School	91000004	0	800,000			800,000	
Columbia Basin College: Vocational Build	20081217	504,489	20,144,000			20,648,489	
Edmonds Community College: Meadowdale	20081318	5,344,895	0			5,344,895	
Edmonds Community College: Primary Elect	20081508	1,211,744	0			1,211,744	
Everett Community College - University C	20042692	1,060,491	0			1,060,491	
Everett Community College: Index Hall Re	20081221	1,131,291	2,301,000		(144,000)	3,288,291	(1)
Everett Community College: Infrastructur	30000190	0	2,061,000			2,061,000	
Grays Harbor College: Child Care Facilit	20082416	790,327	0			790,327	
Grays Harbor College: Science and Math B	20081226	44,939	3,583,000		(1,291,000)	2,336,939	(1)
Grays Harbor College: Vocational Educati	20061303	1	0			1	
Green River Community College: Computer	20042682	67,597	0			67,597	
Green River Community College: Humanities/Classro	20061205	830,551	3,624,000		4,044,000	8,498,551	(3)
Green River Community College: Physical	20061313	612,234	0			612,234	
Green River Community College: Primary E	20081506	470,158	0			470,158	
Green River Community College: Science B	20012688	789,887	0			789,887	
Green River Community College: Science M	30000130	0	1,700,000		(385,000)	1,315,000	(1)
Green River Community College: Trades an	20081222	11,000	2,625,000		(918,000)	1,718,000	(1)
Green River Community College: Water Sys	20061501	1,887,179	0			1,887,179	
Higher Education Cost Escalation	20082850	662,734	0			662,734	
Lake Washington Technical College: Allie	20062697	0	25,986,000		(2,110,000)	23,876,000	(4)
Lower Columbia College: Health & Science	20081225	0	2,969,000		(782,000)	2,187,000	(1)
North Seattle Community College: Employm	20062851	277,748	8,481,000	3,481,000	(805,000)	11,434,748	(4)
North Seattle Community College: Technol	30000129	0	2,976,000		(892,000)	2,084,000	(1)
North Seattle Community College: Wellnes	20061330	1	0			1	
Olympic College: Humanities and Student	20061204	18,944,661	0			18,944,661	
Olympic College: Sophia Bremer Child Dev	30000115	0	4,000,000			4,000,000	
Peninsula College: Business and Humaniti	20081218	447,025	33,627,000		(3,983,000)	30,091,025	(4)
Peninsula College: Library Renovation	20061305	36,491	0			36,491	
Peninsula College: Replacement Science a	20041208	1	0			1	
Pierce College Fort Steilacoom: Cascade Core Phase I	20061326	3,470,226	0			3,470,226	
Pierce College Fort Steilacoom: Cascade Core Phase I	20081321	917,460	15,000,000		6,599,000	22,516,460	(5)
Pierce College Fort Steilacoom: Science and Technolo	20042694	14,043,870	0			14,043,870	
Pierce College Puyallup: Expansion	20002676	4	0			4	
Pierce College Puyallup: Communication A	20042691	17,149,167	0			17,149,167	
Seattle Central Community College: Culin	91000009	0	378,000			378,000	
Seattle Central Community College: Ediso	20081314	13,057,138	0			13,057,138	
Seattle Central Community College: Green	20062410	182,342	0			182,342	
Seattle Central Community College: Marit	20061502	399,338	0			399,338	
Seattle Central Community College: Seatt	30000120	0	2,839,000		(1,502,000)	1,337,000	(1)
Seattle Central Community College: Wood	20081216	1,827,333	24,645,000		(4,885,000)	21,587,333	(4)
Shoreline Community College: Automotive Building f	20062951	601,828	0			601,828	
Shoreline Community College: Annex Renov	20061312	29,661	0			29,661	
Shoreline Community College: Automotive Training C	20082413	994,000	0			994,000	

**State Board For Community And Technical Colleges
2010 Supplemental Capital Budget Allocations
(April 27, 2010)**

	Number	2009-11 Biennial Budget Reappropriation	New	Transfers Btwn Projects	2010 Supplemental	2009-11 Total	Notes
Major Projects (Continued)							
Skagit Valley College: Academic and Stud	20081224	12,142	2,116,000		(386,000)	1,742,142	(1)
Skagit Valley College: Science Building	20041209	6,318,234	0			6,318,234	
South Puget Sound Community College: Bui	20081316	7,435,206	10,002,000		0	17,437,206	
South Puget Sound Community College: Lea	20062698	3,256,000	0			3,256,000	
South Puget Sound Community College: Sci	20042695	741,731	0			741,731	
South Seattle Community College: Trainin	20051854	9,294	0			9,294	
Spokane Community College: Building 7 Re	20081319	874,594	9,748,000		(1,405,000)	9,217,594	(4)
Spokane Community College: Science Build	20041212	50,451	0			50,451	
Spokane Community College: Technical Edu	20081220	1,164,522	27,237,000	(3,481,000)	(3,200,000)	21,720,522	(4)
Spokane Falls Community College: Busines	20051853	999,102	0			999,102	
Spokane Falls Community College: Campus	20062696	996,243	0		(567,000)	429,243	(1)
Spokane Falls Community College: Chemist	20081219	913,949	27,800,000		(6,793,000)	21,920,949	(4)
Spokane Falls Community College: Magnuso	20082415	648,873	0			648,873	
Spokane Falls Community College: Music B	20081320	150,646	13,806,000		(3,347,000)	10,609,646	(4)
Tacoma Community College: Health Careers	20082701	14,896	2,946,000		(1,135,000)	1,825,896	(1)
Tacoma Community College: Science Buildi	20012687	1,772,998	0		(918,000)	854,998	(4)
Walla Walla Community College Water and	91000007	0	1,750,000			1,750,000	
Walla Walla Community College: Culinary	20082419	854,791	0			854,791	
Wenatchee Valley College: Music and Arts	30000119	0	4,115,000			4,115,000	
Yakima Valley Community College: Brown D	20081317	1,212,065	0			1,212,065	
Yakima Valley Community College: College/City Libra	30000113	0	4,001,000			4,001,000	
Yakima Valley Community College: Glenn/A	20041207	119,358	0			119,358	
Yakima Valley Community College: Palmer	30000121	0	1,464,000		(467,000)	997,000	(1)
Major Project Subtotal		136,676,960	275,801,000	0	(27,422,000)	385,055,960	
Statewide Projects							
Facility Preservation	20081050	10,486,780	0			10,486,780	
Facility Repairs	20061050	583,392	0			583,392	
Facility Repairs "A"	30000048	0	18,535,000			18,535,000	
Infrastructure Preservation	20081090	820,109	0			820,109	
Infrastructure Savings	20061751	327,980	0			327,980	(6)
Infrastructure Savings	30000421	0	2			2	(6)
Preservation (RMI)	20061001	21,055	0			21,055	
Preservation (RMI)	20081001	5,310,016	0			5,310,016	
Preservation (RMI)	30000210	0	15,116,000		884,000	16,000,000	(7)
Preventative Facility Maintenance and Bu	30000287	0	22,800,000		(22,800,000)	0	(8)
Program	20062130	84,909	0			84,909	
Program	20082130	6,981,128	0			6,981,128	
Program	30000078	0	13,572,000		2,513,000	16,085,000	(7)
Roof Repairs	20061010	207,997	0			207,997	
Roof Repairs	20081010	2,990,545	0		0	2,990,545	
Roof Repairs "A"	30000010	0	8,493,000		988,000	9,481,000	(7)
Site Repairs	20061090	162,609	0			162,609	
Site Repairs "A"	30000036	0	2,710,000			2,710,000	
Construction Contingency Pool	92000007				3,339,000	3,339,000	(9)
Statewide Project Subtotal		27,976,520	81,226,002		(15,076,000)	94,126,522	
2009-11 Total		164,653,480	357,027,002	0	(42,498,000)	479,182,482	

Notes:

- (1) Shift Construction Administration funding to when construction is funded in future.
- (2) Project complete. Return unspent balance.
- (3) Debt service for COP authorized in 2009-11 Biennial Budget.
- (4) Legislative estimate of bid savings.
- (5) Funding increase of \$8.5M less legislative estimate; Legislature is funding at \$8.5M request for new less their estimate of bid savings.
- (6) Maybe reduced to zero. Section 6012 of ESHB 2836 directed OFM to put excess funds into a statewide risk pool instead of transferring them to another project.
- (7) See college allocation tables for distribution of these funds.
- (8) Offset in operating budget. See *Maintenance Fund Shift from Capital* on the *Step 3-Other Base Adjustments* tab of the Operating Draft Fy 2011 Initial Allocations spreadsheet.
- (9) See Construction Contingency Implementation Plan for these funds.