

# **Tegrity** **&** **WashingtonOnline** **Pooled Enrollments**

**Dr. Cable Green, SBCTC Director, eLearning & Open Education**  
**Connie Broughton, SBCTC Asst. Director, eLearning**



# \*NEW\* Lecture Capture System

- Tegrity Demo

- Recording
- Reviewing (*web, mobile, podcast*)



- Strategic Technology Plan

- unlimited access for all colleges, all students, all faculty

- Tegrity has been successfully deployed at all participating Colleges.

# Tegrity

- Online and in-person faculty professional development
- Positive feedback from faculty & students
- Since the launch (July 2010)
  - 536 instructors have recorded 8,915 lectures
  - 3,142 unique students have viewed those 8,915 recordings 33,860 times.

# What is the Pooled Enrollment System?

- **Goal:** to match student need with instructional capacity.
- Built to share completely online courses
  - Automated creation of student accounts in correct classroom on learning management system (WashingtonOnline ANGEL)
  - Cascading enrollment (fill section 1 first, then section 2)
  - Back-end pass-through billing

# Pooled enrollments is a tool to serve students

- Pooled enrollments is a tool for the colleges to offer courses to their students when they cannot do so locally.
  - Student demand for an existing course is greater than the college can handle.
  - Students need a course that the college can't offer.

# What courses are available?

## – 96 system shared courses

- courses are managed by WashingtonOnline
- can be used / modified by any college

## – 383 college shared courses

- courses are owned by individual colleges
- teaching college opens up the course to other colleges' students
- mostly sellers; few buyers.

[http://waol.org/faculty\\_and\\_staff/courses.aspx](http://waol.org/faculty_and_staff/courses.aspx)

# Cost Model

- **Cost Model: Enrolling College**

- collects tuition and FTE
- pays \$70 per credit per enrollment to the teaching college
- pays \$4 (technology fee) per active user per quarter (unlimited # of courses) to WashingtonOnline

- **Cost Model: Teaching College**

- hires and pays instructor
- receives \$70 per credit per enrollment to the teaching college

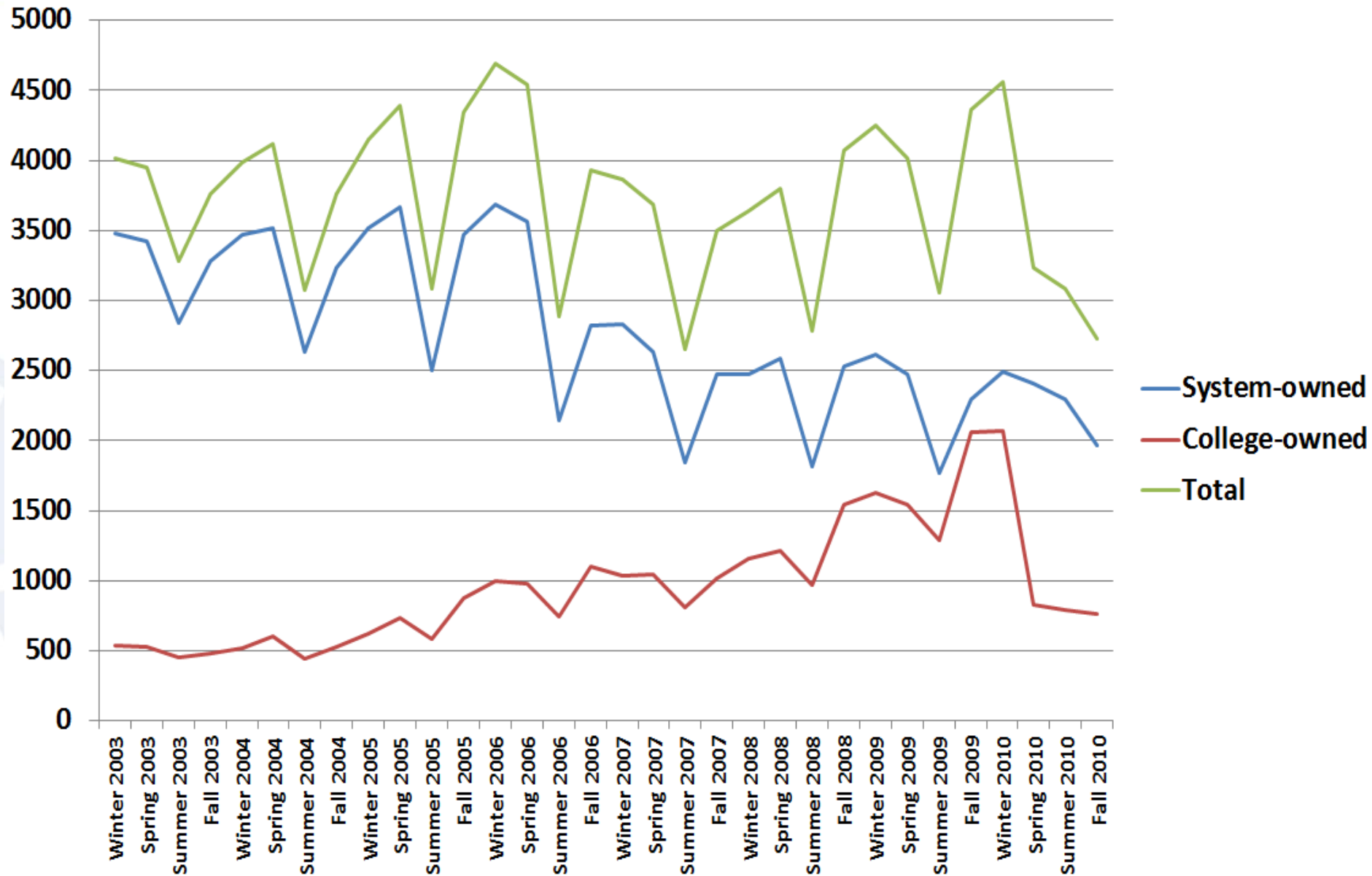
# How Does It Work?

- Colleges that want to enroll students in the shared course enter a unique WAOL ID number in the class record each quarter.
- The WAOL database captures the student enrollments and manages the capacity.
- Section 1 fills first, then section 2, etc.

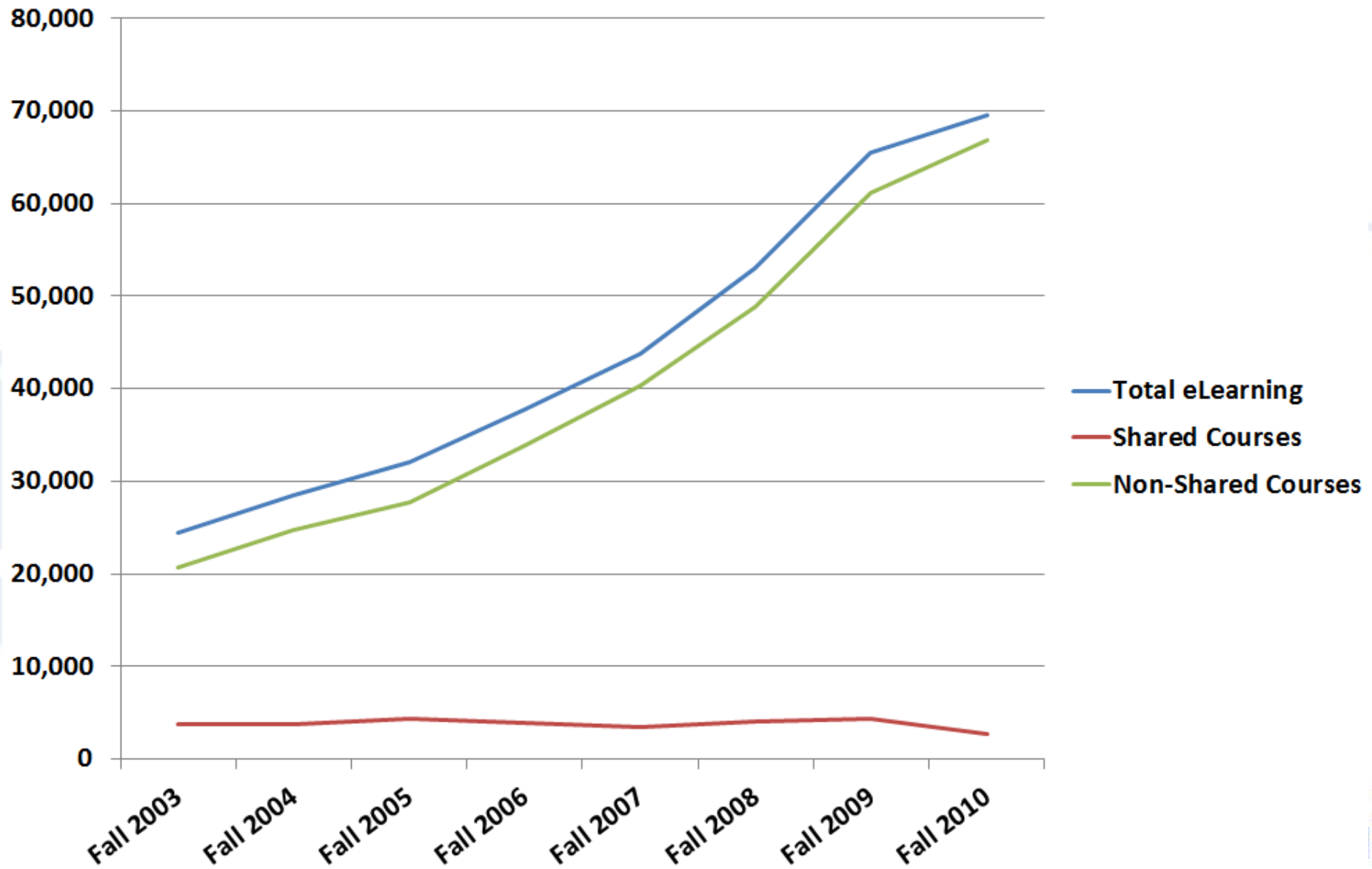
# How Does It Work? Division of Labor

- Students “belong” to the college where they enroll:
  - Support services
  - Transcripts
  - Degree or certificate
- Faculty “belong” to the college that writes their contract:
  - Wages
  - Benefits
  - Evaluation

# Shared Course Enrollments?



# Total eLearning Enrollments?



# Why do colleges use shared courses?

- **Enrolling Colleges**

- offer sections / courses / programs to their students when they cannot do so locally
- prevent students from “leaving” and enrolling in another College

- **Teaching Colleges**

- fill empty seats in class sections
- provide work for available instructors

# Why do colleges use shared courses?

## Students...

- ...get all the online courses they need in a seamless process:
  - one registration process
  - one tuition payment
  - one transcript
  - one financial aid package

# Why do colleges use shared courses?

- **In managing budget cuts, Colleges can use shared courses to:**
  - offer courses that might otherwise be cancelled
  - fill programs that don't have enough students
  - fill faculty schedules

# Why do colleges not use shared courses?

- College has sufficient opportunities for students locally.
- College has enough students to fill its own sections.
- Enrolling college perceives a lack of quality control
  - enrolling college doesn't create the curriculum
  - enrolling college doesn't hire or evaluate the instructor
- College is suspicious of “Not invented here”
  - “if I didn't build it at my College, it's not quality”

# Why do colleges not use shared courses?

- Not all students and not all curriculum work best completely online.
- Some colleges successfully share courses and programs without using the WAOL process
- Colleges haven't talked about the "pooled enrollment system" frequently enough
  - i.e., decision makers don't know about it – or have forgotten about it.
  - **Possible solution:**
    - Colleges review the use of pooled enrollments quarterly.
    - Colleges collect and review data on unmet student demand.

# Why do colleges not use shared courses?

- **Scheduling and Management Issues**

- Colleges who do not use WAOL ANGEL have to provide additional information to students in shared courses on where to log in, when class begins, etc.
  - Colleges have different start / stop times; shared courses must start on the same date no matter through which college the student enrolls
- College staff must find, evaluate, and adopt the courses.
  - Colleges have different course review / approval processes – some allow for quick adoption of courses from other colleges... some do not

# Why do colleges not use shared courses?

## Sometimes the Financial Model doesn't work

- **Enrolling college collects FTE + Tuition**
  - moves \$70/credit hour to teaching college (set by Instruction Commission)
  - Tuition is currently an average of \$70/credit hour
- **Analysis:**
  - **If the college is over-enrolled:**
    - » Finances roughly break-even. Tuition goes to teaching college. No funds for required student services.
  - **If the college is under-enrolled:**
    - » Enrolling college has FTE dollars for required student services.
    - » New enrollments help college make its FTE band.

# TACTC Policy Positions: 2011

- YES to requesting a different allocation method for students using WashingtonOnline classes.
- We believe this is an underused efficiency and service to students. We want to incentivize colleges to enroll, encourage and market statewide online classes.

# SBCTC eLearning Strategy

- To support and promote quality open courses (shared courses & other open content) so colleges can use them when useful.
  - **up next:** Open Course Library & \$2B of DOL workforce programs
- To provide and support shared eLearning tools that can be used by all learners:
  - ANGEL, Tegrity, Elluminate, streaming media, NW eTutoring Consortium, 24/7 library reference, virtual worlds...
  - Professional Development
  - 24x7 help desk support

# Questions?

# Discussion

**Dr. Cable Green**

SBCTC Director, eLearning & Open Education  
(360) 704-4334 / [cgreen@sbctc.edu](mailto:cgreen@sbctc.edu)

**Connie Broughton**

SBCTC Assistant Director, eLearning  
(509) 434-5152 / [cbroughton@sbctc.edu](mailto:cbroughton@sbctc.edu)

