



# DATA DICTIONARY

*SATELLITE TABLES 1.0*

## Revisions

Change reference	Date	Version
Original document – combined individual data dictionaries for all satellite tables.	07/22/2022	1.0

## Contacts

Data Services

[dataservices@sbctc.edu](mailto:dataservices@sbctc.edu)

# CONTENTS

<b>Revisions</b>	<b>2</b>
<b>Contacts</b>	<b>2</b>
<b>CLASS_ATTRIBUTES</b>	<b>4</b>
Table Description	4
Entity Relationship Diagram	4
Field Descriptions	5
<b>STUDENT_GROUPS</b>	<b>8</b>
Table Description	8
Entity Relationship Diagram	8
Field Definitions	9
<b>STUDENT_ATTRIBUTES</b>	<b>12</b>
Table Description	12
Entity Relationship Diagram	13
Field Descriptions	14
<b>STUDENT_PLANS</b>	<b>18</b>
Table Description	18
Entity Relationship Diagram	18
Field Descriptions	19
<b>STUDENT_RACE</b>	<b>27</b>
Table Description	27
Entity Relationship Diagram	27
Field Descriptions	28
<b>STUDENT_WAIVERS</b>	<b>34</b>
Table Description	34
Entity Relationship Diagram	35
Field Descriptions	36
<b>Appendix A: Data Classification Appendix</b>	<b>40</b>

# CLASS\_ATTRIBUTES

## Table Description

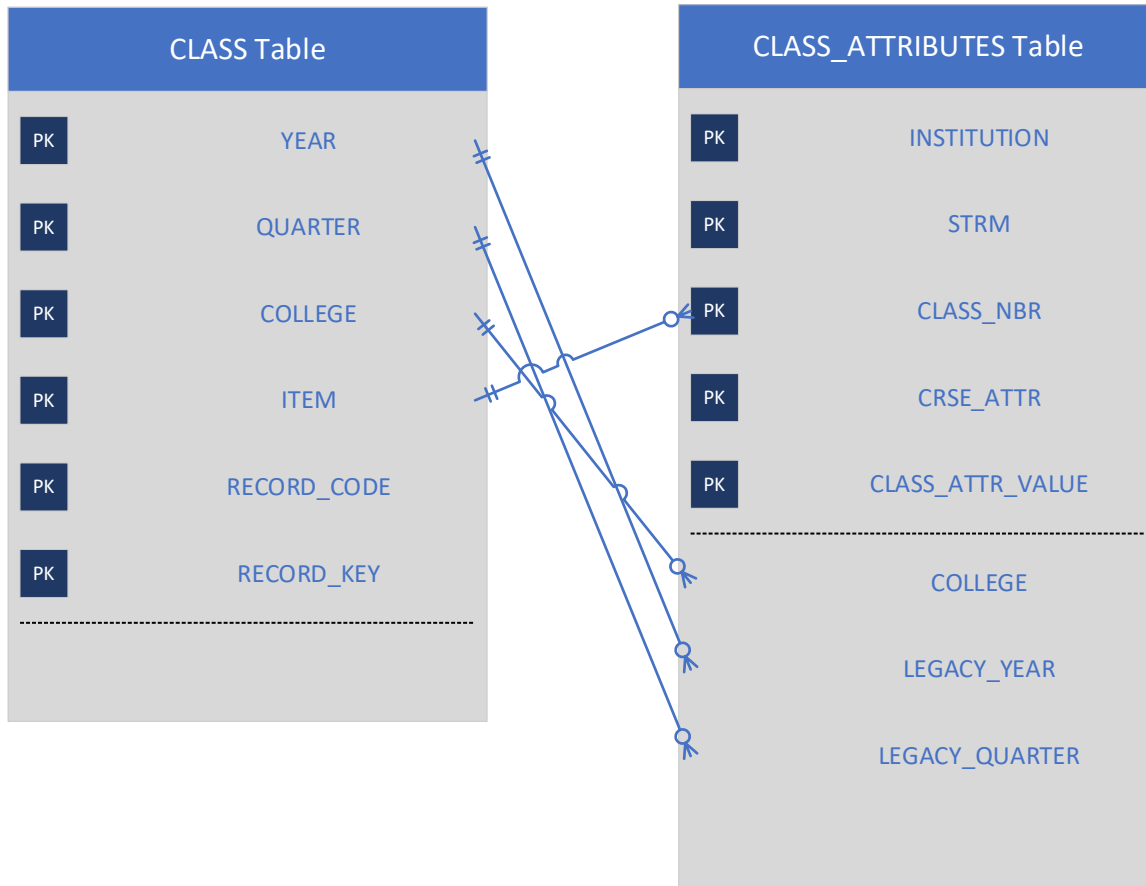
The CLASS\_ATTRIBUTES table contains the listing of course attributes associated to each class that was offered during the quarter. Class Attributes that begin with “S” are globally defined by SBCTC. Examples of the “S” Class Attributes are: Funding Source, IBEST and Course Intent.

Class attributes are inherited from the course attribute and are modifiable at the class level.

## Entity Relationship Diagram

The Entity Relationship Diagram (ERD) shown below consists only of the key data elements typically used for linking between tables. The full list of data elements are provided in the Field Definitions section for this table.

Each class in the CLASS Table may have zero or more records in the CLASS\_ATTRIBUTES Table.



## Field Descriptions

### INSTITUTION (PK)

**Data Type:** Char

**Size:** 5

**Definition:** The five-digit code used in ctcLink to identify each community or technical college in the state of Washington.

**Data Classification:** [Category 2](#)

**PeopleSoft Source:** CS.CLASS\_ATTRIBUTE

**Lookup/Crosswalk:** LOOKUP.DW\_REF\_ENR.COLLEGE\_MASTER

### STRM (PK)

**Data Type:** Char

**Size:** 4

**Definition:** A ctcLink variable that indicates the academic year and term. STRM stands for Session Term. The academic year begins with summer quarter and ends with spring quarter. The first character represents the millennium. The second and third characters represent the 2-digit calendar year and the last character represents the term (or quarter).

**Data Classification:** [Category 2](#)

**PeopleSoft Source:** CS.CLASS\_ATTRIBUTE

**Lookup/Crosswalk:** LOOKUP.DW\_REF\_ENR.YRQ\_CONVERT

**Example Valid Values:**

Values	Value Descriptions
2197	Fall Quarter 2019
2201	Winter Quarter 2020
2213	Spring Quarter 2021
2225	Summer Quarter 2022

### CLASS\_NBR (PK)

**Data Type:** Numeric

**Size:** 38,0

**Definition:** A unique identifier of each class section during a given quarter at the specified college.

**Data Classification:** [Category 2](#)

**PeopleSoft Source:** CS.CLASS\_ATTRIBUTE

## CRSE\_ATTR (PK)

**Data Type:** Varchar

**Size:** 4

**Definition:** Class Attributes are manually assigned by college staff and designate a characteristic of the class. Class Attributes starting with “S” are created by SBCTC and used for state-level reporting.

**Data Classification:** [Category 2](#)

**PeopleSoft Source:** CS.CLASS\_ATTRIBUTE

**Lookup table:** LOOKUP.DW\_REF\_ENR.CLASS\_ATTRIBUTES

## CRSE\_ATTR\_VALUE (PK)

**Data Type:** Varchar

**Size:** 10

**Definition:** The STDNT\_ATTR\_VALUE provides the discrete activity that qualified the student for service under the program. In the legacy system, the WORK\_ATTND field is equivalent in nature.

**Data Classification:** [Category 2](#)

**PeopleSoft Source:** CS.CLASS\_ATTRIBUTE

**Lookup table:** LOOKUP.DW\_REF\_ENR.CLASS\_ATTRIBUTES

## CRSE\_ID

**Data Type:** Varchar

**Size:** 6

**Definition:** The unique identifier that identifies the course in the course catalog.

**Data Classification:** [Category 2](#)

**PeopleSoft Source:** CS.CLASS\_ATTRIBUTE

## CLASS\_SECTION

**Data Type:** Varchar

**Size:** 4

**Definition:** Represents the specific offering of the class.

**Data Classification:** [Category 2](#)

**PeopleSoft Source:** CS.CLASS\_ATTRIBUTE

## COLLEGE

**Data Type:** Char

**Size:** 3

**Definition:** A three-digit code used to identify each community or technical college in the state of Washington. The first two-digits represent the district code.

**Data Classification:** [Category 2](#)

**Source:** The last three characters of INSTITUTION.

## LEGACY\_YEAR

**Data Type:** Char

**Size:** 3

**Definition:** A three-character field identifying the academic year. The academic year begins with summer quarter and ends with spring quarter.

**Data Classification:** [Category 2](#)

**Source:** Derived from STRM.

**Lookup/Crosswalk:** LOOKUP.DW\_REF\_ENR.YRQ\_CONVERT

**Examples of Valid Values:**

Values	Value Descriptions
990	1999-2000
A01	2000-2001
B01	2010-2011
C01	2020-2021

## LEGACY\_QUARTER

**Data Type:** Char

**Size:** 1

**Definition:** A one-character code identifying the specific quarter of the enrollment. The academic year begins with summer quarter and ends with spring quarter.

**Data Classification:** [Category 2](#)

**Source:** Derived from STRM

**Lookup/Crosswalk:** LOOKUP.DW\_REF\_ENR.YRQ\_CONVERT

**Valid Values:**

Values	Value Descriptions
1	Summer
2	Fall
3	Winter
4	Spring

## LEGACY\_YRQ

**Data Type:** Char

**Size:** 4

**Definition:** The concatenation of YEAR and QUARTER. The first three characters are the YEAR, and the last character is the QUARTER.

**Data Classification:** [Category 2](#)

**Source:** Derived from STRM

**Lookup/Crosswalk:** LOOKUP.DW\_REF\_ENR.YRQ\_CONVERT

# STUDENT\_GROUPS

## Table Description

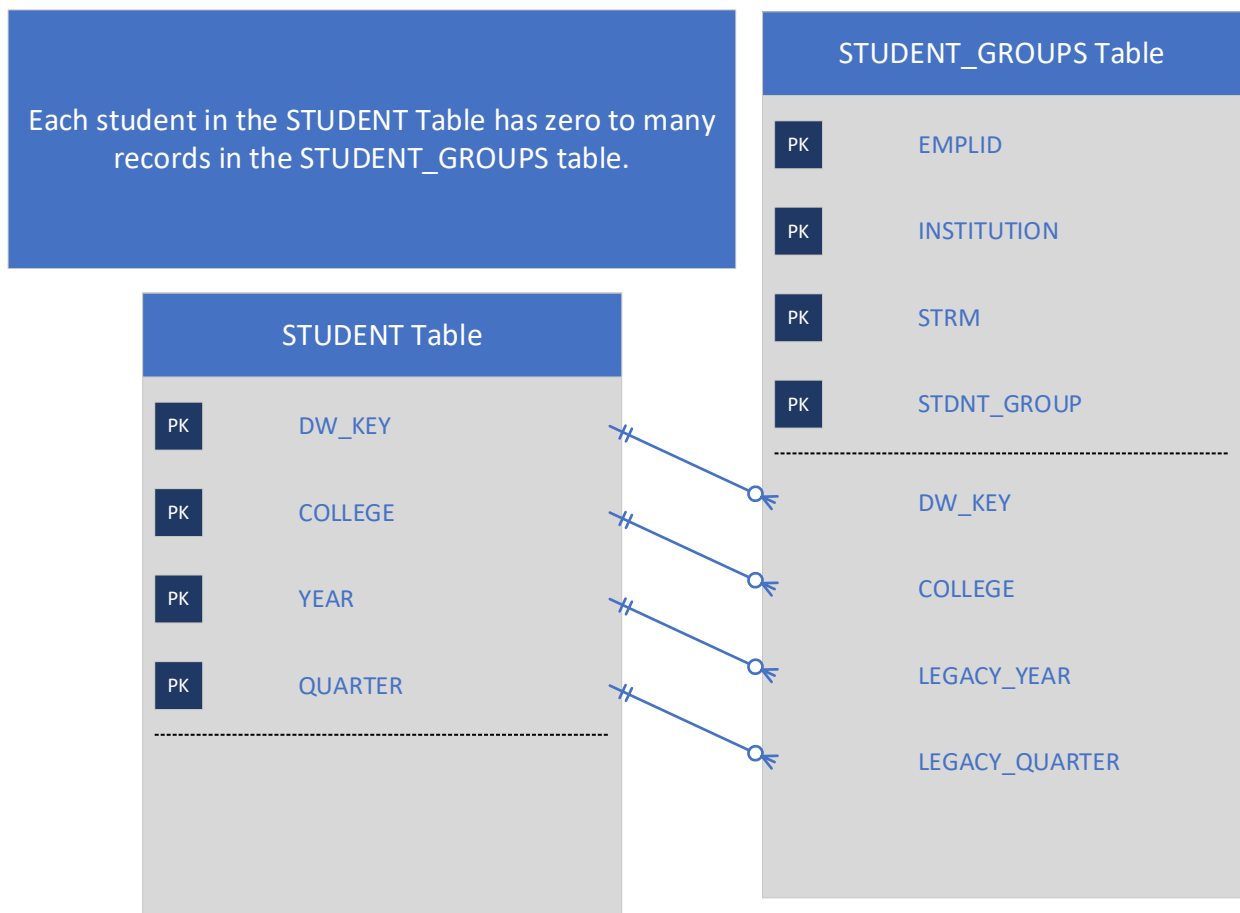
The STUDENT\_GROUP table contains the available student group information from ctcLink Campus Solutions for each student enrolled during the term and included in the SBCTC Data Warehouse. This table only contains the system defined student groups, those that begin with “S”.

Student group is a code that identifies a group of students by demographic, program and/or enrollment information. This table contains the ctcLink student group associated to the student where the student group was active as of the college’s quarter end date.

The Data Warehouse process translates the Effective Dated value into a STRM value for snapshot and reporting purposes based on the college’s quarter end date.

## Entity Relationship Diagram

The Entity Relationship Diagram (ERD) shown below consists only of the key data elements typically used for linking between tables. The full list of data elements are provided in the Field Definitions section for this table.





## Field Definitions

### EMPLID (PK)

**Data Type:** Varchar

**Size:** 11

**Definition:** The PeopleSoft unique identifier assigned to each student and employee. The same EMPLID is used across all pillars and all institutions for each student/employee. The same EMPLID is used whether the student is an employee or student or both.

**Data Classification:** [Category 3](#)

**PeopleSoft Source:** CS.STDNT\_GRP\_HIST

### INSTITUTION (PK)

**Data Type:** Char

**Size:** 5

**Definition:** The five-digit code used in ctcLink to identify each community or technical college in the state of Washington.

**Data Classification:** [Category 2](#)

**PeopleSoft Source:** CS.STDNT\_GRP\_HIST

**Lookup/Crosswalk:** LOOKUP.DW\_REF\_ENR.COLLEGE\_MASTER

### STRM (PK)

**Data Type:** CHAR

**Size:** 4

**Definition:** A ctcLink variable that indicates the academic year and term. STRM stands for Session Term. The academic year begins with summer quarter and ends with spring quarter. The first character represents the millennium. The second and third characters represent the 2-digit calendar year and the last character represents the term (or quarter).

**Data Classification:** [Category 2](#)

**PeopleSoft Source:** CS.STDNT\_GRP\_HIST

**Lookup/Crosswalk:** LOOKUP.DW\_REF\_ENR.YRQ\_CONVERT

**Example Valid Values:**

Values	Value Descriptions
2197	Fall Quarter 2019
2201	Winter Quarter 2020
2213	Spring Quarter 2021
2225	Summer Quarter 2022

## STDNT\_GROUP (PK)

**Data Type:** Varchar

**Size:** 4

**Definition:** A four-character code identifying a group of students by demographic, program and/or enrollment information for reporting purposes. Student Groups starting with “S” are created by SBCTC and used for state-level reporting. Other student groups are “manually assigned” by college staff.

See the [SBCTC Coding Manual](#) for additional information related to the “S” student groups including their definition and indication of mass assigned or manually assigned.

**Data Classification:** [Category 3](#)

**PeopleSoft Source:** CS.STDNT\_GRP\_S\_HIST

**Lookup/Crosswalk:** DW\_REF\_ENR.STUDENT\_GROUPS

## DW\_KEY

**Data Type:** Varchar

**Size:** 10

**Definition:** The Data Warehouse system-wide unique identifier assigned to each student. This field is used to track students longitudinally across all colleges. This field is used across all student related tables in the Data Warehouse and *is not college specific*.

**Data Classification:** [Category 3](#)

**PeopleSoft Source:** DW\_KEY is retrieved based on available student identifiers in the following order: CS.EMPLID, SID, and SSN. If no identifier is found to exist in the Data Warehouse, a new DW\_KEY is created.

## COLLEGE

**Data Type:** Char

**Size:** 3

**Definition:** A three-digit code used to identify each community or technical college in the state of Washington. College codes begin with the two-digit district code.

**Data Classification:** [Category 2](#)

**Legacy Source:** SMIS.COLLEGE

**PeopleSoft Source:** The last three characters of CS.INSTITUTION.

**Lookup/Crosswalk:** LOOKUP.DW\_REF\_ENR.COLLEGE\_MASTER

## LEGACY\_YEAR

**Data Type:** Char

**Size:** 3

**Definition:** A three-character field identifying the academic year. The academic year begins with summer quarter and ends with spring quarter.

**Data Classification:** [Category 2](#)

**PeopleSoft Source:** Derived from STRM

**Lookup/Crosswalk:** LOOKUP.DW\_REF\_ENR.YRQ\_CONVERT

**Examples of Valid Values:**

Values	Value Descriptions
990	1999-2000
A01	2000-2001
B01	2010-2011
C01	2020-2021

## LEGACY\_QUARTER

**Data Type:** Char

**Size:** 1

**Definition:** A one-character code identifying the specific quarter of the enrollment. The academic year begins with summer quarter and ends with spring quarter.

**Data Classification:** [Category 2](#)

**PeopleSoft Source:** Derived from STRM

**Lookup/Crosswalk:** LOOKUP.DW\_REF\_ENR.YRQ\_CONVERT

**Valid Values:**

Values	Value Descriptions
1	Summer
2	Fall
3	Winter
4	Spring

## LEGACY\_YRQ

**Data Type:** Char

**Size:** 4

**Definition:** The concatenation of YEAR and QUARTER. The first three characters are the YEAR, and the last character is the QUARTER.

**Data Classification:** [Category 2](#)

**PeopleSoft Source:** Derived from STRM

**Lookup/Crosswalk:** LOOKUP.DW\_REF\_ENR.YRQ\_CONVERT

# STUDENT\_ATTRIBUTES

## Table Description

The STUDENT\_ATTRIBUTES table contains the listing of student attributes that designate a student's type of participation in a particular program for a student in ctcLink for a given term. The attribute is then used to set a Student Group value.

The STUDENT\_ATTRIBUTES table contains the available student attribute information from ctcLink Campus Solutions for each student enrolled during the term and included in the SBCTC Data Warehouse. This table only contains the system defined student attributes, those that begin with "S".

Student Groups may or may not have an associated Student Attribute value. Only certain programs are assigned attributes and include: Worker Retraining, WorkFirst, Early Achievers Grant and Apprenticeships.

This table contains the ctcLink student attribute associated to the student's term activated plan stack where the student attribute was active as of the college's quarter end date.

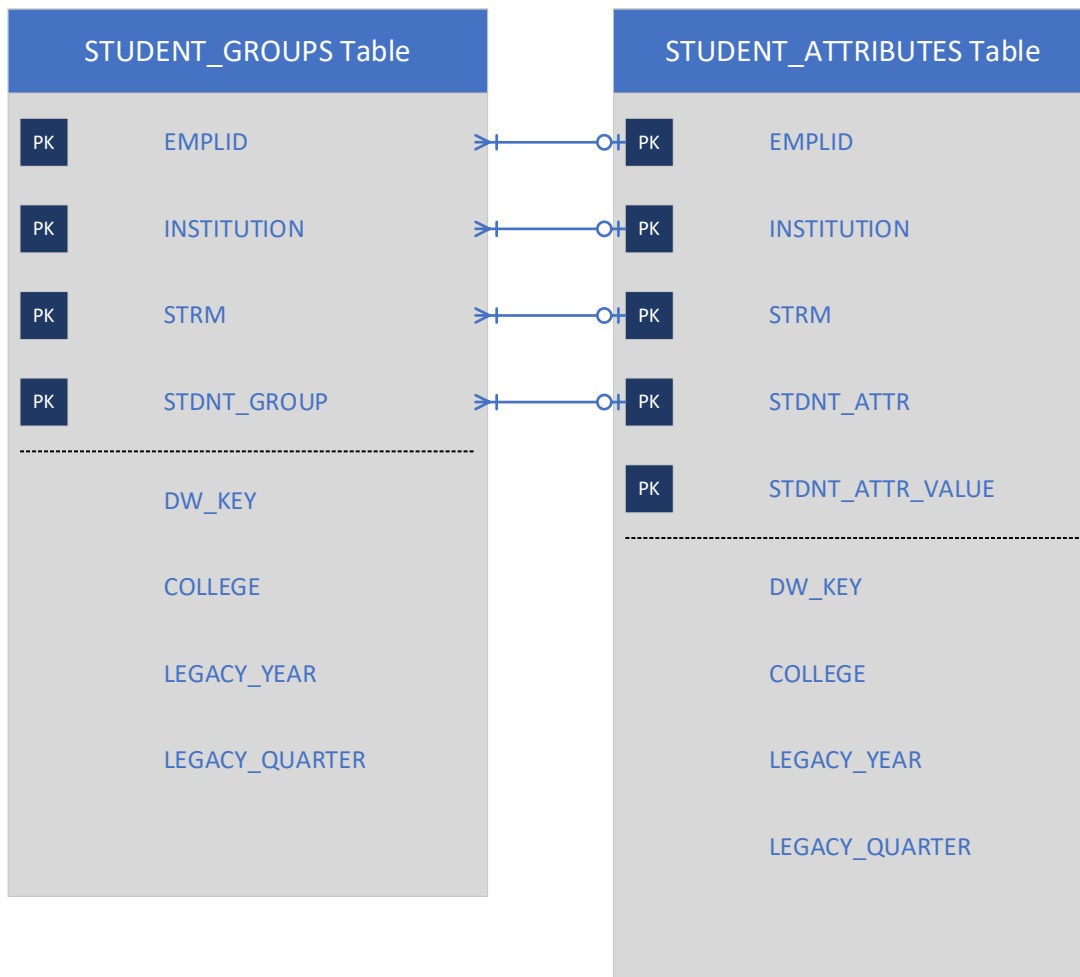
The Data Warehouse process translates the Effective Dated value into a STRM value for snapshot and reporting purposes based on the college's quarter end date.

## Entity Relationship Diagram

The Entity Relationship Diagram (ERD) shown below consists only of the key data elements typically used for linking between tables. The full list of data elements are provided in the Field Definitions section for this table.

Student Groups may or may not have an associated Student Attribute value. Only certain programs are assigned attributes and include: Worker Retraining, WorkFirst, Early Achievers Grant and Apprenticeships.

Each student in the STUDENT\_GROUPS Table may have zero or one record in the STUDENT\_ATTRIBUTES Table for the associated STDNT\_GROUP code.



## Field Descriptions

### EMPLID (PK)

**Data Type:** Varchar

**Size:** 11

**Definition:** The PeopleSoft unique identifier assigned to each student and employee. The same EMPLID is used across all pillars and all institutions for each student/employee. The same EMPLID is used whether the student is an employee or student or both.

**Data Classification:** [Category 3](#)

**PeopleSoft Source:** CS.STDNT\_ATTR\_DTL

### INSTITUTION (PK)

**Data Type:** Char

**Size:** 5

**Definition:** The five-digit code used in ctcLink to identify each community or technical college in the state of Washington.

**Data Classification:** [Category 2](#)

**PeopleSoft Source:** CS.STDNT\_ATTR\_DTL

**Lookup/Crosswalk:** LOOKUP.DW\_REF\_ENR.COLLEGE\_MASTER

### STRM (PK)

**Data Type:** Char

**Size:** 4

**Definition:** A ctcLink variable that indicates the academic year and term. STRM stands for Session Term. The academic year begins with summer quarter and ends with spring quarter. The first character represents the millennium. The second and third characters represent the 2-digit calendar year and the last character represents the term (or quarter).

**Data Classification:** [Category 2](#)

**PeopleSoft Source:** Derived at the time of snapshot using effective dating of the source record.

**Lookup/Crosswalk:** LOOKUP.DW\_REF\_ENR.YRQ\_CONVERT

**Example Valid Values:**

Values	Value Descriptions
2197	Fall Quarter 2019
2201	Winter Quarter 2020
2213	Spring Quarter 2021
2225	Summer Quarter 2022

## STDNT\_ATTR (PK)

**Data Type:** Varchar

**Size:** 4

**Definition:** Student Attributes are manually assigned along with a Student Attribute Value by college staff and designate a student's participation in a particular program for reporting purposes. Student Attributes starting with "S" are created by SBCTC and used for state-level reporting.

**Data Classification:** [Category 2](#)

**PeopleSoft Source:** CS.STDNT\_ATTR\_DTL

**Lookup table:** LOOKUP.DW\_REF\_ENR.STUDENT\_ATTRIBUTES

## STDNT\_ATTR\_VALUE (PK)

**Data Type:** Varchar

**Size:** 10

**Definition:** The STDNT\_ATTR\_VALUE provides the discrete activity that qualified the student for service under the program. In the legacy system, the WORK\_ATTND field is equivalent in nature.

**Data Classification:** [Category 2](#)

**PeopleSoft Source:** CS.STDNT\_ATTR\_DTL

**Lookup table:** LOOKUP.DW\_REF\_ENR.STUDENT\_ATTRIBUTES

## STDNT\_CAR\_NBR

**Data Type:** Integer

**Definition:** Represents the term activated Plan Stack.

**Data Classification:** [Category 2](#)

**PeopleSoft Source:** CS.STDNT\_ATTR\_DTL

## DW\_KEY

**Data Type:** Varchar

**Size:** 10

**Definition:** The Data Warehouse system-wide unique identifier assigned to each student. This field is used to track students longitudinally across all colleges. This field is used across all student related tables in the Data Warehouse and *is not college specific*.

**Data Classification:** [Category 3](#)

**Source:** DW\_KEY is retrieved based on available student identifiers in the following order: CS.EMPLID, SID, and SSN. If no identifier is found to exist in the Data Warehouse, a new DW\_KEY is created.

**Examples of Use:** A system identifier and the primary key on many tables. Used for system unduplicated headcounts.

## COLLEGE

**Data Type:** Char

**Size:** 3

**Definition:** A three-digit code used to identify each community or technical college in the state of Washington. The first two-digits represent the district code.

**Data Classification:** [Category 2](#)

**Source:** The last three characters of CS.INSTITUTION.

**Lookup/Crosswalk:** LOOKUP.DW\_REF\_ENR.COLLEGE\_MASTER

## LEGACY\_YEAR

**Data Type:** Char

**Size:** 3

**Definition:** A three-character field identifying the academic year. The academic year begins with summer quarter and ends with spring quarter.

**Data Classification:** [Category 2](#)

**Source:** Derived from STRM.

**Lookup/Crosswalk:** LOOKUP.DW\_REF\_ENR.YRQ\_CONVERT

**Examples of Valid Values:**

Values	Value Descriptions
990	1999-2000
A01	2000-2001
B01	2010-2011
C01	2020-2021

## LEGACY\_QUARTER

**Data Type:** Char

**Size:** 1

**Definition:** A one-character code identifying the specific quarter of the enrollment. The academic year begins with summer quarter and ends with spring quarter.

**Data Classification:** [Category 2](#)

**Source:** Derived from STRM

**Lookup/Crosswalk:** LOOKUP.DW\_REF\_ENR.YRQ\_CONVERT

**Valid Values:**

Values	Value Descriptions
1	Summer
2	Fall
3	Winter
4	Spring



## LEGACY\_YRQ

**Data Type:** Char

**Size:** 4

**Definition:** The concatenation of YEAR and QUARTER. The first three characters are the YEAR, and the last character is the QUARTER.

**Data Classification:** [Category 2](#)

**Source:** Derived from STRM

**Lookup/Crosswalk:** LOOKUP.DW\_REF\_ENR.YRQ\_CONVERT

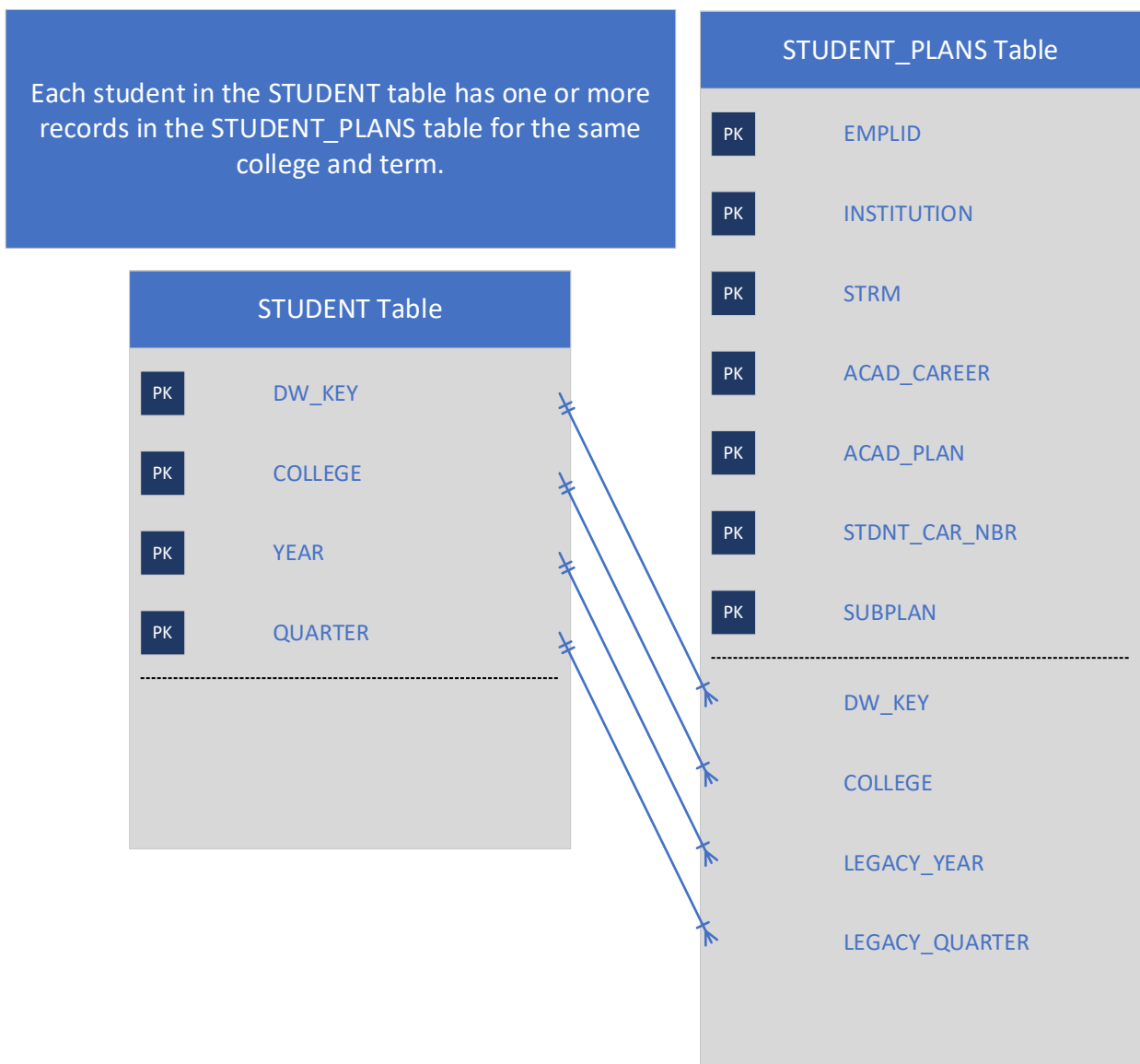
# STUDENT\_PLANS

## Table Description

The STUDENT\_PLANS table contains the listing of all term activated plan codes for a student in ctcLink for a given term. The table also provides the cross walk of plan code to INTENT code. See the STUDENT table data dictionary for more information on INTENT codes.

## Entity Relationship Diagram

The Entity Relationship Diagram (ERD) shown below consists only of the key data elements typically used for linking between tables. The full list of data elements are provided in the Field Definitions section for this table.



## Field Descriptions

### EMPLID (PK)

**Data Type:** Varchar

**Size:** 11

**Definition:** The PeopleSoft unique identifier assigned to each student and employee. The same EMPLID is used across all pillars and all institutions for each student/employee. The same EMPLID is used whether the student is an employee or student or both.

**Data Classification:** [Category 3](#)

**PeopleSoft Source:** CS.PS\_ACAD\_PLAN\_VW

### INSTITUTION (PK)

**Data Type:** Char

**Size:** 5

**Definition:** The five-digit code used in ctcLink to identify each community or technical college in the state of Washington.

**Data Classification:** [Category 2](#)

**PeopleSoft Source:** CS.PS\_ACAD\_PLAN\_VW

**Lookup/Crosswalk:** LOOKUP.DW\_REF\_ENR.COLLEGE\_MASTER

### STRM (PK)

**Data Type:** Char

**Size:** 4

**Definition:** A ctcLink variable that indicates the academic year and term. STRM stands for Session Term. The academic year begins with summer quarter and ends with spring quarter. The first character represents the millennium. The second and third characters represent the 2-digit calendar year and the last character represents the term (or quarter).

**Data Classification:** [Category 2](#)

**PeopleSoft Source:** CS.PS\_ACAD\_PLAN\_VW

**Lookup/Crosswalk:** LOOKUP.DW\_REF\_ENR.YRQ\_CONVERT

**Example Valid Values:**

Values	Value Descriptions
2197	Fall Quarter 2019
2201	Winter Quarter 2020
2213	Spring Quarter 2021
2225	Summer Quarter 2022

## ACAD\_CAREER (PK)

**Data Type:** Varchar

**Size:** 4

**Definition:** The student's academic career associated to this plan code.

**Data Classification:** [Category 2](#)

**PeopleSoft Source:** CS.PS\_ACAD\_PLAN\_VW

## ACAD\_PLAN (PK)

**Data Type:** Varchar

**Size:** 10

**Definition:** The student's term activated academic plan for the specified quarter. The coding schema for plan codes is as follows:

--- / -- / ---

CIP Acronym / Program Acronym / Degree Type

Each student must be term activated in a Plan Stack consisting of one or more Plan Codes. The plan codes are cross walked to student INTENT codes in the SBCTC Data Warehouse.

**Data Classification:** [Category 2](#)

**PeopleSoft Source:** CS.PS\_ACAD\_PLAN\_VW

## STDNT\_CAR\_NBR (PK)

**Data Type:** Numeric

**Size:** 38,0

**Definition:** Represents the term activated Plan Stack.

**Data Classification:** [Category 2](#)

**PeopleSoft Source:** CS.PS\_ACAD\_PLAN\_VW

## SUBPLAN (PK)

**Data Type:** Varchar

**Size:** 50

**Definition:** The subplan attached to a students active plan stack for a given quarter. Students can have more than one subplan active.

**History:** N/A

**Data Classification:** [Category 2](#)

**PeopleSoft Source:** SYSADM\_CS.PS\_ACAD\_SUBPLAN, SYSADM\_CS.PS\_ACAD\_SUBPLN\_TBL.

**Lookup Table:** LOOKUP.DW\_REF\_ENR.PLAN\_CODES

## ACAD\_PROG

**Data Type:** Varchar

**Size:** 5

**Definition:** The student's academic program associated to this plan code.

**Data Classification:** [Category 2](#)

**PeopleSoft Source:** CS.PS\_ACAD\_PLAN\_VW

**Valid Values:**

ACAD_PROG	ACAD_CAREER	Description
CNTED	CNED	Continuing Education
ACADM	UGRD	Academic
BCHLR	UGRD	Baccalaureate
NOAWS	UGRD	Non-Award Seeking
PRFTC	UGRD	Professional Technical
TRNST	UGRD	Transitional Studies

## CIP\_CODE

**Data Type:** Char

**Size:** 6

**Definition:** A six-digit code identifying the student's major. CIP codes (Classification of Instructional Programs) are created by the US Department of Education to describe the subject area of courses and major areas of study.

This value does not include the decimal in the third character.

**Data Classification:** [Category 2](#)

**PeopleSoft Source:** CS.PS\_ACAD\_PLAN\_TBL

**Examples of Use:** The CIP Code can be linked to the CIP Table to provide an English language translation or to aggregate student plans. CIP codes can be categorized in several ways.

**Lookup/Crosswalk:** LOOKUP.DW\_REF\_ENR.CIP

## DESCR

**Data Type:** Varchar

**Size:** 30

**Definition:** The description of the plan code, typically the name of the program.

**Data Classification:** [Category 2](#)

**PeopleSoft Source:** CS.PS\_ACAD\_PLAN\_TBL

## INTENT

**Data Type:** Varchar

**Size:** 1

**Definition:** A one-character code representing the student's intent for enrolling as coded by the colleges. Student Intent codes are an important aspect of the SBCTC Data Warehouse, allowing for the aggregation of students by their purpose for attending. Student Intent coding differentiates students who are award-seeking from students who are only taking a few courses, as well as differentiating transfer students from those seeking a professional/technical credential. These distinctions are important for establishing cohorts used in federal reporting and for funding purposes. The new software system, PeopleSoft, does not include a Student Intent data element; however, it has been determined that the SBCTC Data Warehouse will continue to populate this field because of its usefulness in grouping students into categories. PeopleSoft Plan Codes will be cross-walked to the appropriate Intent code.

**Data Classification:** [Category 3](#)

**PeopleSoft Source:** Derived from the student's PLAN\_CODE, CAREER (for Intent W) or CIP code of enrollments (for Intent D).

**Examples of Use:** Widely used data element. Student Achievement, DLOA and Perkins reporting.

**Lookup/Crosswalk:** LOOKUP.DW\_REF\_ENR.INTENT

### Valid Values:

Code	Intent	Descriptions
A	Academic Non-Transfer Degree Program	Students enrolled in a degree program not designed to transfer to a four year university. These are students who are pursuing a general studies degree coded as Exit code 1 and CIP code 24.0101.
B	Academic Transfer Program	Students enrolled in the DTA/MRP or local agreement programs intended for transfer to a four year university.
D	Basic Education for Adults	Non-award seeking students enrolled in adult education including ESL, ABE, HSE, HSC. Students who are enrolled in a certificate or degree program and taking adult education to prepare for college level work should be coded with the INTENT code that best represents their purpose for attending.
F	Professional/Technical Program	Students who are enrolled in a professional/technical program. This includes Apprenticeship students who are award seeking. Professional/technical programs are also commonly referred to as vocational or workforce programs. For legacy, a valid professional/technical EPC is required.

Code	Intent	Descriptions
G	Professional/Technical Program Applicant (preparatory coursework only)	Student has no interest in preparing for multiple degree pathways and does not intend to remain at the institution if they do not get accepted into the selective admissions program. At a time when the student is no longer in prerequisite status (acceptance into selective admissions for example), the intent code should adjust accordingly. For legacy, a valid professional/technical EPC is required.
H	Apprenticeship Program	Students enrolled in an apprenticeship program not seeking an award from the college but an L&I journeyman card. For legacy, a valid professional/technical EPC is required.
I	Applied Baccalaureate Program	Students matriculated in a baccalaureate program. For legacy, a valid professional/technical EPC is required.
J	Upgrading Job Skills Courses	Students enrolled for the purpose of upgrading their job skills by taking one or more courses. These students are not seeking a certificate or degree completion.
L	Non-Award Seeking Student	Students taking one or more classes but not seeking a certificate or degree. This category is also used for dual enrollment students such as non-award seeking Running Start and College in the High School.
W	Exclusive Continuing Education	Used for PeopleSoft Colleges Only. Students enrolled exclusively in non-credit bearing continuing education courses. This includes students who are exclusively enrolled in the PeopleSoft Continuing Education career with a Plan Code of "CED".
Y	None of the Above	Colleges should strive to assign the appropriate INTENT code. Null or Blank INTENT codes are set to "Y" in the SMIS extracts during MIS finals. SMS is not updated.

### Student Plan Code to Intent Code Mapping

Intent Code	PeopleSoft Criteria
D	DEGREE = HSC or ACAD_PLAN = HSD, HSE, ESL or ABE
G	ACAD_PLAN ends in PRQ
I	DEGREE = BAA, BAS, BAT
H	Member of SAPR Student Group
F	DEGREE = APT, AAS, C01, C20, C45, C90 or ACAD_PLAN = RENDTAA
B	DEGREE = AA, AS, DTA/MRP

Intent Code	PeopleSoft Criteria
A	DEGREE = AGS
J	ACAD_PLAN = NASJU
L	ACAD_PLAN = NASOT, TSP
W	ACAD_PLAN = CED only
Y	All others

## PRIORITY

**Data Type:** Varchar

**Size:** 2

**Definition:** Because students may only have one INTENT code per institution per term, if they are coded to more than one Plan Code, we must prioritize the INTENT codes.

**Data Classification:** [Category 2](#)

**Valid Values:**

Priority	Leg INTENT	Descriptions
1	D	High School Diploma/GED Certificate (pre-college courses)
2	I	Applied Baccalaureate Program
3	H	Apprenticeship
4	F	Workforce Program
5	G	Workforce Program Applicant
6	B	Academic Transfer
7	A	Academic Non-Transfer Degree
8	X	Undecided
9	J	Upgrading Job Skills
10	K	Vocational Home and Family Life (Educational Program Code required)
11	L	General Studies (Non-Degree/Certificate)
12	W	Exclusive Continuing Education

## DEGREE

**Data Type:** Varchar

**Size:** 16

**Definition:** The last three characters of the plan code indicating the degree or certificate level of the Plan Code. The DEGREE field is used to map to EXIT\_CD in the SBCTC Data Warehouse Completions table. This crosswalk of DEGREE to EXIT\_CD can be found in the Completions data dictionary.

If the DEGREE field value is null, the plan code does not result in a credential.

**Data Classification:** [Category 2](#)

**PeopleSoft Source:** CS.PS\_ACAD\_PLAN\_TBL



## TRNSCR\_DESCR

**Data Type:** Varchar

**Size:** 100

**Definition:** The description of the Plan Code as shown on the student's transcript.

**Data Classification:** [Category 2](#)

**PeopleSoft Source:** CS.PS\_ACAD\_PLAN\_TBL

## SUBPLAN\_DESCR

**Data Type:** Varchar

**Size:** 255

**Definition:** Description of active subplan.

**Data Classification:** [Category 2](#)

**PeopleSoft Source:** SYSADM\_CS.PS\_ACAD\_SUBPLN\_TBL

## DW\_KEY

**Data Type:** Varchar

**Size:** 10

**Definition:** The Data Warehouse system-wide unique identifier assigned to each student. This field is used to track students longitudinally across all colleges. This field is used across all student related tables in the Data Warehouse and *is not college specific*.

**Data Classification:** [Category 3](#)

**PeopleSoft Source:** DW\_KEY is retrieved based on available student identifiers in the following order: CS.EMPLID, SID, and SSN. If no identifier is found to exist in the Data Warehouse, a new DW\_KEY is created.

**Examples of Use:** A system identifier and the primary key on many tables. Used for system unduplicated headcounts.

## COLLEGE

**Data Type:** Char

**Size:** 3

**Definition:** A three-digit code used to identify each community or technical college in the state of Washington. College codes begin with the two-digit district code.

**History:** Pierce District split into two colleges in 2001-02.

**Data Classification:** [Category 2](#)

**PeopleSoft Source:** Derived from INSTITUTION

**Lookup/Crosswalk:** LOOKUP.DW\_REF\_ENR.COLLEGE\_MASTER

## LEGACY\_YEAR

Data Type: Char

Size: 3

**Definition:** A three-character field identifying the academic year. The academic year begins with summer quarter and ends with spring quarter.

Data Classification: [Category 2](#)

PeopleSoft Source: Derived from STRM

Lookup/Crosswalk: LOOKUP.DW\_REF\_ENR.YRQ\_CONVERT

Examples of Valid Values:

Values	Value Descriptions
990	1999-2000
A01	2000-2001
B01	2010-2011
C01	2020-2021

## LEGACY\_QUARTER

Data Type: Char

Size: 1

**Definition:** A one-character code identifying the specific quarter of the enrollment. The academic year begins with summer quarter and ends with spring quarter.

Data Classification: [Category 2](#)

PeopleSoft Source: Derived from STRM

Lookup/Crosswalk: LOOKUP.DW\_REF\_ENR.YRQ\_CONVERT

Valid Values:

Values	Value Descriptions
1	Summer
2	Fall
3	Winter
4	Spring

## LEGACY\_YRQ

Data Type: Char

Size: 4

**Definition:** The concatenation of YEAR and QUARTER. The first three characters are the YEAR, and the last character is the QUARTER.

Data Classification: [Category 2](#)

PeopleSoft Source: Derived from STRM

Lookup/Crosswalk: LOOKUP.DW\_REF\_ENR.YRQ\_CONVERT

# STUDENT\_RACE

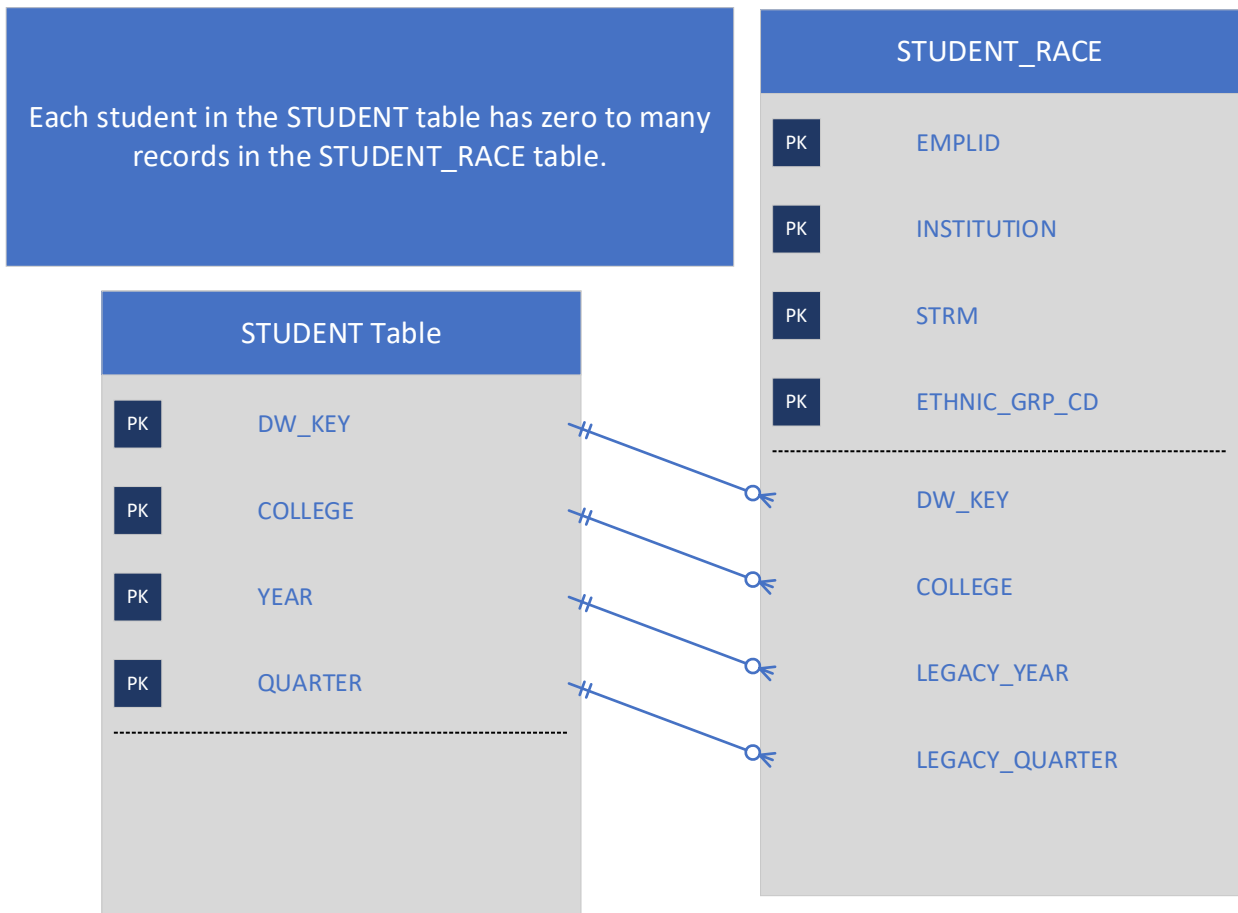
## Table Description

The STUDENT\_RACE table contains the available race and ethnicity information from ctcLink Campus Solutions for each student enrolled during the term and included in the SBCTC Data Warehouse.

This table contains the ctcLink race/ethnicity values associated to the student as well as the crosswalk to the legacy race/ethnicity coding schema.

## Entity Relationship Diagram

The Entity Relationship Diagram (ERD) shown below consists only of the key data elements typically used for linking between tables. The full list of data elements are provided in the Field Definitions section for this table.



## Field Descriptions

### EMPLID (PK)

**Data Type:** Varchar

**Size:** 11

**Definition:** The PeopleSoft unique identifier assigned to each student and employee. The same EMPLID is used across all pillars and all institutions for each student/employee. The same EMPLID is used whether the student is an employee or student or both.

**Data Classification:** [Category 3](#)

**PeopleSoft Source** CS.DIVERS\_ETHNIC

### INSTITUTION (PK)

**Data Type:** Char

**Size:** 5

**Definition:** The five-digit code used in ctcLink to identify each community or technical college in the state of Washington.

**Data Classification:** [Category 2](#)

**PeopleSoft Source** CS.DIVERS\_ETHNIC

**Lookup/Crosswalk:** LOOKUP.DW\_REF\_ENR.COLLEGE\_MASTER

### STRM (PK)

**Data Type:** Char

**Size:** 4

**Definition:** A ctcLink variable that indicates the academic year and term. STRM stands for Session Term. The academic year begins with summer quarter and ends with spring quarter. The first character represents the millennium. The second and third characters represent the 2-digit calendar year and the last character represents the term (or quarter).

**Data Classification:** [Category 2](#)

**PeopleSoft Source:** Derived based on the snapshot timing and effective dating.

**Lookup/Crosswalk:** LOOKUP.DW\_REF\_ENR.YRQ\_CONVERT

**Example Valid Values:**

Values	Value Descriptions
2197	Fall Quarter 2019
2201	Winter Quarter 2020
2213	Spring Quarter 2021
2225	Summer Quarter 2022

## ETHNIC\_GRP\_CD (PK)

**Data Type:** Varchar

**Size:** 8

**Definition:** The student's reported ethnic background. The student can select any number of ethnic background codes. Each ethnic background code is mapped to a race code for aggregated reporting.

**Data Classification:** [Category 2](#)

**PeopleSoft Source:** CS.DIVERS\_ETHNIC

**Lookup/Crosswalk:** LOOKUP.DW\_REF\_ENR.ETHNIC\_GRP\_CODES

## ETHNIC\_GROUP

**Data Type:** Char

**Size:** 1

**Definition:** The student's race grouping. Each ETHNIC\_GRP\_CD is rolled up to a higher level grouping for reporting purposes.

**Data Classification:** [Category 2](#)

**PeopleSoft Source:** CS.DIVERS\_ETHNIC

**Lookup/Crosswalk:** LOOKUP.DW\_REF\_ENR.RACE\_CODES\_PS

**Valid Values:**

VALUE	DESCRIPTION
1	White
2	Black/African American
3	Hispanic/Latino
4	Asian
5	American Indian/Alaska Native
6	Not Specified
7	Native Hawaiian/Oth Pac Island

## PRIMARY\_INDICATOR

**Data Type:** Varchar

**Size:** 1

**Definition:** Indicates if the ethnic group has been selected as the student's primary ethnicity.

This field should be used with caution as it is not populated consistently for all students.

**Data Classification:** [Category 2](#)

**PeopleSoft Source:** CS.DIVERS\_ETHNIC

**Valid Values:**

Value	Description
Y	The student indicated that this ethnic grp code is their primary race.
N	Not designated as the student's primary ethnic grp code.
Null	Not Reported

## HISP\_LATINO

**Data Type:** Varchar

**Size:** 1

**Definition:** A 1 digit code indicating whether or not the Student has selected the Hispanic/Latino flag during admissions.

**Data Classification:** [Category 2](#)

**PeopleSoft Source:** CS.ETHNICITY\_DTL

Value	Description
Y	The student indicated that they are of Hispanic/Latina/o/x decent.
N	The student did not indicate that they are of Hispanic/Latina/o/x decent.
Null	Not Reported

## LEGACY\_CENSUS\_RACE\_CD

**Data Type:** Varchar

**Size:** 3

**Definition:** A three-character code collected from the student at time of Admission and/or registration. This is the legacy based census race code crosswalked to the ctclink ETHNIC\_GRP\_CD.

**Source:** Cross-walked to the legacy value based on the ctclink Campus Solutions ETHNIC\_GRP\_CD value.

**Data Classification:** [Category 3](#)

**Example Valid Values:**

Example Value	Value Description
605	Chinese/Tibetan
608	Filipino
611	Japanese
612	Korean
619	Vietnamese
872	African American
900	Black, Tahitian
935	Eskimo
941	Aleut

## LEGACY\_RACE\_CODE

**Data Type:** Varchar

**Size:** 1

**Definition:** A one-character code representing the student's race or ethnic origin

**Data Classification:** [Category 3](#)

**Source:** Cross-walked from the ctclink Campus Solutions ETHNIC\_GROUP.

**Valid Values:**

Race Code	Description
1	Asian
2	Black/African American
3	American Indian
4	Hispanic
5	Pacific Islander
6	White
7	Native Hawaiian or Other Pacific Islander
8	Alaska Native
9	Multi-Racial
0	Other Race
Null	Not Reported

## DW\_KEY

**Data Type:** Varchar

**Size:** 10

**Definition:** The Data Warehouse system-wide unique identifier assigned to each student. This field is used to track students longitudinally across all colleges. This field is used across all student related tables in the Data Warehouse and *is not college specific*.

**Data Classification:** [Category 3](#)

**PeopleSoft Source:** DW\_KEY is retrieved based on available student identifiers in the following order: CS.EMPLID, SID, and SSN. If no identifier is found to exist in the Data Warehouse, a new DW\_KEY is created.

**Examples of Use:** A system identifier and the primary key on many tables. Used for system unduplicated headcounts.

## COLLEGE

**Data Type:** Char

**Size:** 3

**Definition:** A three-digit code used to identify each community or technical college in the state of Washington. College codes begin with the two-digit district code.

**Data Classification:** [Category 2](#)

**PeopleSoft Source:** The last three characters of INSTITUTION.

**Lookup/Crosswalk:** LOOKUP.DW\_REF\_ENR.COLLEGE\_MASTER

## LEGACY\_YEAR

**Data Type:** Char

**Size:** 3

**Definition:** A three-character field identifying the academic year. The academic year begins with summer quarter and ends with spring quarter.

**Data Classification:** [Category 2](#)

**PeopleSoft Source:** Derived from STRM

**Lookup/Crosswalk:** LOOKUP.DW\_REF\_ENR.YRQ\_CONVERT

**Examples of Valid Values:**

Values	Value Descriptions
990	1999-2000
A01	2000-2001
B01	2010-2011
C01	2020-2021

## LEGACY\_QUARTER

**Data Type:** Char

**Size:** 1



**Definition:** A one-character code identifying the specific quarter of the enrollment. The academic year begins with summer quarter and ends with spring quarter.

**Data Classification:** [Category 2](#)

**PeopleSoft Source:** Derived from STRM

**Lookup/Crosswalk:** LOOKUP.DW\_REF\_ENR.YRQ\_CONVERT

**Valid Values:**

Values	Value Descriptions
1	Summer
2	Fall
3	Winter
4	Spring

## LEGACY\_YRQ

**Data Type:** Char

**Size:** 4

**Definition:** The concatenation of YEAR and QUARTER. The first three characters are the YEAR, and the last character is the QUARTER.

**Data Classification:** [Category 2](#)

**Legacy Source:** SMIS.MIS-STU-D.YRQ

**PeopleSoft Source:** Derived from STRM

**Lookup/Crosswalk:** LOOKUP.DW\_REF\_ENR.YRQ\_CONVERT

# STUDENT\_WAIVERS

## Table Description

This table contains the information on waivers applied to student records in PeopleSoft Campus Solutions.

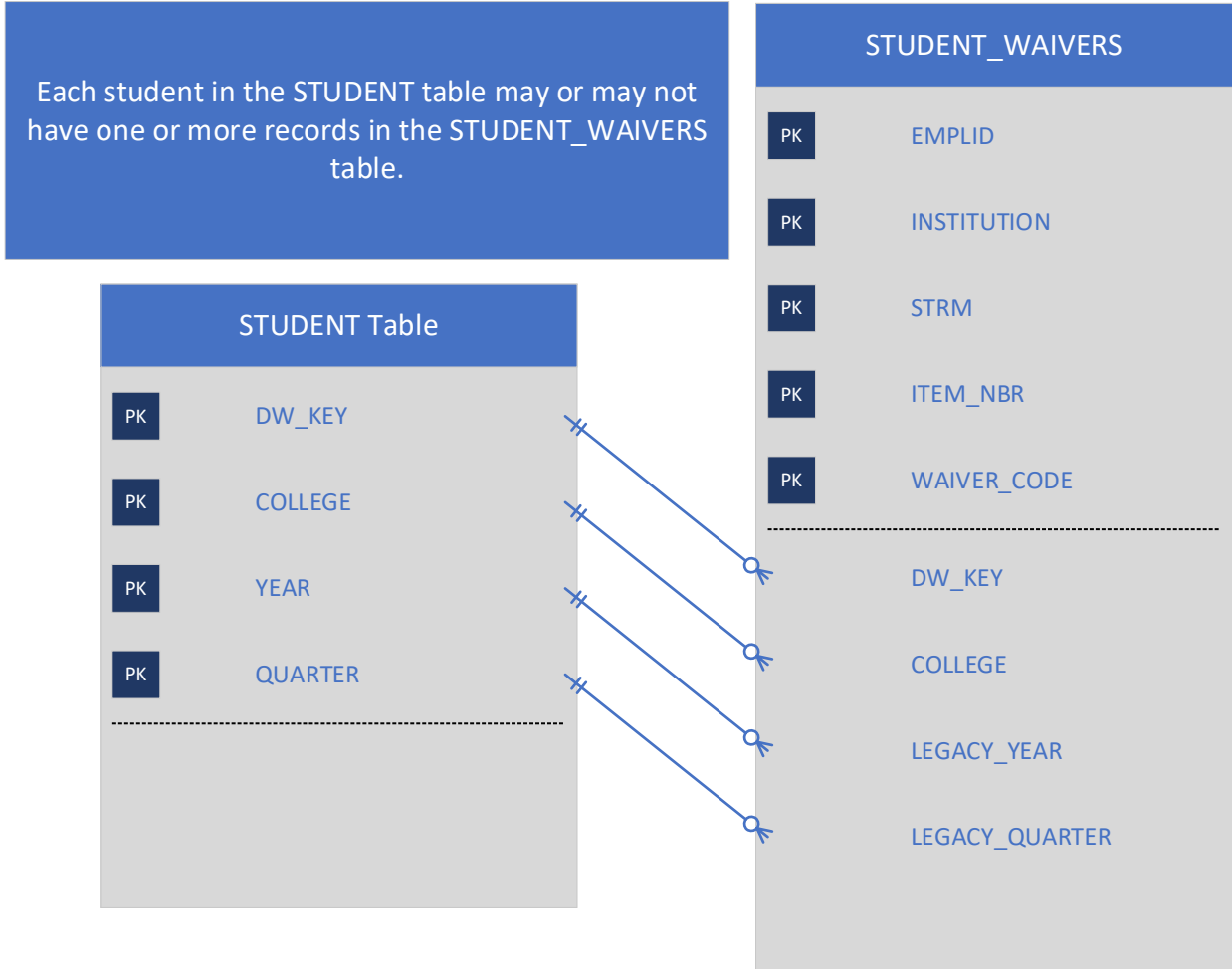
The data is aggregated by student, college, term, fee code and waiver code, therefore it is not at the transactional detail level available in PeopleSoft.

This table only contains the information about the account activity related to waivers (ITEM\_TYPE\_CD = W).

**Note:** The data in this table is replaced each quarter for the current academic year to pick up any changes that may have been done. The data for the academic year becomes final as of the spring snapshot. Because this data is changed throughout the academic year, it will not necessarily align with the Fee Pay Status codes in the Stuclass table.

# Entity Relationship Diagram

The Entity Relationship Diagram (ERD) shown below consists only of the key data elements typically used for linking between tables. The full list of data elements are provided in the Field Definitions section for this table.



## Field Descriptions

### EMPLID (PK)

**Data Type:** Varchar

**Size:** 11

**Definition:** The PeopleSoft unique identifier assigned to each student and employee. The same EMPLID is used across all pillars and all institutions for each student/employee. The same EMPLID is used whether the student is an employee or student or both.

**Data Classification:** [Category 3](#)

**PeopleSoft Source:** CS. PS\_ITEM\_SF

### INSTITUTION (PK)

**Data Type:** Char

**Size:** 5

**Definition:** The five-digit code used in ctcLink to identify each community or technical college in the state of Washington.

**Data Classification:** [Category 2](#)

**PeopleSoft Source:** CS. PS\_ITEM\_SF

**Lookup/Crosswalk:** LOOKUP.DW\_REF\_ENR.COLLEGE\_MASTER

### STRM (PK)

**Data Type:** Char

**Size:** 4

**Definition:** The session term associated to the account activity. This is the PeopleSoft version of year and quarter.

**Data Classification:** [Category 2](#)

**PeopleSoft Source:** CS. PS\_ITEM\_SF

### ITEM\_NBR (PK)

**Data Type:** Varchar

**Size:** 15

**Definition:** In PeopleSoft a number is assigned to a transaction when it is initially posted on a student's account, whether it is a debit or credit. There can be multiple line sequences associated with an item number, one is the original transaction; the others are changes to the transaction.

**Data Classification:** [Category 2](#)

**PeopleSoft Source:** CS. PS\_ITEM\_SF

### WAIVER\_CODE (PK)

**Data Type:** Varchar

**Size:** 6

**Definition:** Waiver codes are similar to Fee Pay Status (FPS) codes in the legacy system and are configured to best match the FPS with a “W” at the beginning. They are used to waive or adjust a student qualifying charges.

**Data Classification:** [Category 2](#)

**PeopleSoft Source:** CS.PS\_ITEM\_SF

**Lookup Table:** LOOKUP.DW\_REF\_ENR.WAIVER\_CODES

## WAIVER\_CODE\_3DIGIT

**Data Type:** Char

**Size:** 3

**Definition:** The first three characters of the WAIVER\_CODE. The first three characters represent the specific waiver and any additional characters represent the fee code typically.

**Data Classification:** [Category 2](#)

**PeopleSoft Source:** CS.PS\_ITEM\_SF

**Lookup Table:** LOOKUP.DW\_REF\_ENR.WAIVER\_CODES\_STATE\_APPROVED

## FEE\_CD

**Data Type:** Varchar

**Size:** 6

**Definition:** Term Fee Codes are similar to fee codes in the legacy system but are only used for specific charges. Term Fee Codes are for fees that all students pay when enrolled for a term. For example tuition and mandatory fees.

Note that records with no FEE\_CD value contain a single space so to be part of the primary key.

**Data Classification:** [Category 2](#)

**PeopleSoft Source:** CS.PS\_ITEM\_SF

**Lookup Table:** LOOKUP.DW\_REF\_ENR.WAIVER\_FEE\_CODES

## DESCR

**Data Type:** Varchar

**Size:** 30

**Definition:** The description of the waiver code.

**Data Classification:** [Category 2](#)

**PeopleSoft Source:** CS.PS\_WAIVER\_CODE\_TBL

## LINE\_AMT

**Data Type:** Decimal

**Size:** 10,2

**Definition:** This is the amount associated with one line of a transaction on a student's account whether it is a debit or a credit.

**Data Classification:** [Category 2](#)

**PeopleSoft Source:** CS.PS\_ITEM\_LINE\_SF

## DW\_KEY

**Data Type:** Varchar

**Size:** 10

**Definition:** The Data Warehouse system-wide unique identifier assigned to each student. This field is used to track students longitudinally across all colleges. This field is used across all student related tables in the Data Warehouse and *is not college specific*.

**Data Classification:** [Category 3](#)

**PeopleSoft Source:** DW\_KEY is retrieved based on available student identifiers in the following order: CS.EMPLID, SID, and SSN. If no identifier is found to exist in the Data Warehouse, a new DW\_KEY is created.

**Examples of Use:** A system identifier and the primary key on many tables. Used for system unduplicated headcounts.

## COLLEGE

**Data Type:** Char

**Size:** 3

**Definition:** A three-digit code used to identify each community or technical college in the state of Washington. College codes begin with the two-digit district code.

**History:** Pierce District split into two colleges in 2001-02.

**Data Classification:** [Category 2](#)

**Legacy Source:** SMIS.COLLEGE

**PeopleSoft Source:** The last three characters of CS. PS\_ITEM\_SF.ACCOUNT\_TERM.INSTITUTION.

**Lookup/Crosswalk:** LOOKUP.DW\_REF\_ENR.COLLEGE; LOOKUP.DW\_REF\_ENR.COLLEGE4RPT; LOOKUP.DW\_REF\_ENR.COL\_CD

## LEGACY\_YEAR

**Data Type:** Char

**Size:** 3

**Definition:** A three-character field identifying the academic year. The academic year begins with summer quarter and ends with spring quarter.

**Data Classification:** [Category 2](#)

**PeopleSoft Source:** Derived from first three characters of CS.PS\_ITEM\_SF.ACCOUNT\_TERM and converted to the legacy year code.

**Lookup/Crosswalk:** LOOKUP.DW\_REF\_ENR.YRQ\_CONVERT

**Examples of Valid Values:**

Values	Value Descriptions
990	1999-2000
A01	2000-2001
B01	2010-2011
C01	2020-2021

## LEGACY\_QUARTER (PK)

**Data Type:** Char

**Size:** 1

**Definition:** A one-character code identifying the specific quarter of the enrollment. The academic year begins with summer quarter and ends with spring quarter.

**Data Classification:** [Category 2](#)

**PeopleSoft Source:** Derived from the fourth character of CS.PS\_ITEM\_SF.ACCOUNT\_TERM and converted to the legacy quarter code.

**Lookup/Crosswalk:** LOOKUP.DW\_REF\_ENR.YRQ\_CONVERT

**Valid Values:**

Values	Value Descriptions
1	Summer
2	Fall
3	Winter
4	Spring

## LEGACY\_YRQ

**Data Type:** Char

**Size:** 4

**Definition:** The concatenation of YEAR and QUARTER. The first three characters are the YEAR, and the last character is the QUARTER.

**Data Classification:** [Category 2](#)

**PeopleSoft Source:** Derived from the fourth character of CS.PS\_ITEM\_SF.ACCOUNT\_TERM and converted to the legacy quarter code.

**Lookup/Crosswalk:** LOOKUP.DW\_REF\_ENR.YRQ\_CONVERT

# Appendix A: Data Classification Appendix

Each data element in the Data Warehouse is associated with a category classification that indicates the method of which to use and store the data.

For more information, see the [Data Classification](#) brief.

Category	Description
<b>Category 1</b>	<b>Public Information</b> SBCTC does not consider any Data Warehouse data to be category 1. SBCTC does not release data to the public unless specifically requested. The release of public information is reserved for the college’s discretion based upon their FERPA directory information policies.
<b>Category 2</b>	<b>Sensitive Information</b> Student related information that is considered “directory information” under FERPA and is generally not considered harmful or to be an invasion of privacy if released. This information can be disclosed to outside organizations with the student’s prior consent. This is information that would be released during a public records request of Data Warehouse data.
<b>Category 3</b>	<b>Confidential Information</b> Enrollment information protected under FERPA, personnel and financial data. Category 3 includes all data elements except those explicitly stated in categories 2 and 4. Category 3 data is not distributed unless governed by a contract or data sharing agreement.
<b>Category 4</b>	<b>Confidential Information requiring Special Handling</b> Highly confidential data that is exempt from disclosure under applicable state and federal laws such as personally identifiable data protected under FERPA. Category 4 data is information whose unauthorized use, access, disclosure, acquisition, modification, loss, or deletion could result in severe damage to SBCTC or colleges, students, employees or customers. This information has limited use per specific state and federal laws.





Content is licensed under a Creative Commons Attribution 4.0 International License, unless noted otherwise.

Washington State Board for Community and Technical Colleges