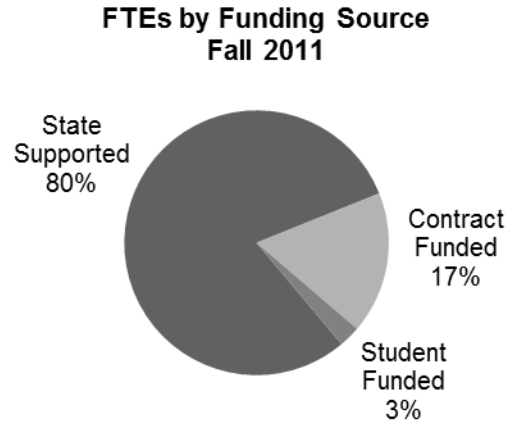


# Enrollments

## FTES by Funding Source

Colleges enrolled 171,436 full-time equivalent students (FTES) in all fund sources in fall 2011. 137,201 FTES were state-supported, representing a drop of 5.4 percent from fall 2010, which had been the highest enrollment ever in Washington’s community and technical colleges.

State-supported FTES, 80 percent of the total, fell by 6,913 FTES (nearly 5 percent from the previous fall). This was the first decrease in state FTES since 2003. State appropriations to the State Board for Community and Technical Colleges (SBCTC) cover the major cost of a fixed number of FTES in the community and technical college system. (A quarterly FTES is equal to 15 credits.)



All other enrollments are regarded as either contract-funded or student-funded. Contract-funded courses are those where the cost of instruction is paid entirely by a contracting organization. Contract-funded FTES decreased by 3,268 FTES, or about 10 percent from fall 2010 to fall 2011. Running Start, which allows student to earn high school and college credits, enrolled 13,086 FTES and represented 44 percent of all contract enrollments. Alternative high school enrollments decreased while international contract students increased. For a description of contract enrollments see page 73.

Student-funded class costs are paid entirely by the individuals enrolled. Student-funded offerings (2.6 percent of all FTES) include vocational courses such as world language for travelers, and workforce education courses such as microcomputer applications. Student-funded FTES increased by 472 FTES in fall 2011 over the previous fall, and was the only category of FTES to show an increase.

### FALL FTES BY FUNDING SOURCE

	2007	2008	2009	2010	2011
<b>All Funds</b>	155,539	168,240	178,294	181,145	171,436
% Change	1.8%	8.2%	6.0%	1.6%	-5.4%
<b>State Supported</b>	124,895	133,919	142,935	144,114	137,201
% Change	1.0%	7.2%	6.7%	0.8%	-4.8%
% of All Funds	80.3%	79.6%	80.2%	79.6%	80.0%
<b>Contract Funded</b>	26,536	30,510	31,305	33,003	29,735
% Change	3.9%	15.0%	2.6%	5.4%	-9.9%
<b>State and Contract Total</b>	151,430	164,429	174,240	177,117	166,936
% Change	1.5%	8.6%	6.0%	1.7%	-5.7%
<b>Student Funded</b>	4,108	3,811	4,054	4,028	4,500
% Change	10.7%	-7.2%	6.4%	-0.6%	11.7%

Source: SBCTC data warehouse.

**FTES BY FUNDING SOURCE BY COLLEGE  
FALL 2011**

	<b>State Supported</b>	<b>Contract Funded</b>	<b>State and Contract Subtotal</b>	<b>Student Funded</b>	<b>Total All Funds</b>
Bates	3,748	295	4,043	58	4,101
Bellevue	8,574	2,439	11,013	684	11,697
Bellingham	2,113	73	2,187	102	2,288
Big Bend	1,689	157	1,846	5	1,852
Cascadia	1,989	454	2,442	2	2,444
Centralia	2,084	531	2,615	28	2,643
Clark	8,533	1,409	9,942	299	10,241
Clover Park	4,115	238	4,353	26	4,379
Columbia Basin	4,504	670	5,174	120	5,294
Edmonds	5,191	2,701	7,892	394	8,287
Everett	4,818	1,032	5,850	569	6,418
Grays Harbor	1,671	474	2,145	9	2,154
Green River	5,505	2,552	8,057	112	8,169
Highline	5,706	1,461	7,167	13	7,181
Lake Washington	2,838	481	3,318	31	3,349
Lower Columbia	2,866	339	3,205	55	3,261
Olympic	5,349	636	5,984	0	5,984
Peninsula	1,781	521	2,302	18	2,320
Pierce Fort Steilacoom	3,197	2,853	6,050	79	6,128
Pierce Puyallup	2,108	495	2,603	1	2,603
Renton	3,233	251	3,484	82	3,567
Seattle Central	5,031	1,230	6,261	478	6,739
Seattle North	3,655	719	4,374	386	4,760
Seattle South	4,033	766	4,799	82	4,880
Seattle Voc Institute	431	34	465	6	470
Shoreline	4,624	498	5,122	16	5,138
Skagit Valley	3,657	508	4,166	21	4,186
South Puget Sound	3,778	539	4,317	52	4,369
Spokane	5,580	294	5,875	43	5,918
Spokane Falls	4,156	517	4,673	104	4,776
Spokane IEL	2,736	591	3,327	71	3,399
Tacoma	5,005	1,012	6,017	72	6,089
Walla Walla	3,048	1,472	4,521	25	4,546
Wenatchee Valley	2,946	439	3,385	21	3,406
Whatcom	2,959	787	3,746	433	4,179
Yakima Valley	3,950	267	4,217	3	4,221
<b>SYSTEM TOTAL</b>	<b>137,201</b>	<b>29,735</b>	<b>166,936</b>	<b>4,500</b>	<b>171,436</b>

Source: SBCTC data warehouse.

Notes: Totals may not add due to rounding. State includes Natural Resource Waivers, Worker Retraining and Excess FTES. Contract Funded includes Running Start and contract international FTES.

**CHANGE IN STATE FTES  
FALL 2010 TO FALL 2011**

	<b>Fall 2010</b>	<b>Fall 2011</b>	<b>Change</b>	<b>% Change</b>
Bates	3,328	3,748	420	12.6%
Bellevue	9,153	8,574	-579	-6.3%
Bellingham	2,291	2,113	-178	-7.8%
Big Bend	1,814	1,689	-125	-6.9%
Cascadia	2,005	1,989	-16	-0.8%
Centralia	2,363	2,084	-279	-11.8%
Clark	8,565	8,533	-32	-0.4%
Clover Park	4,428	4,115	-313	-7.1%
Columbia Basin	4,476	4,504	28	0.6%
Edmonds	5,780	5,191	-589	-10.2%
Everett	4,982	4,818	-164	-3.3%
Grays Harbor	1,804	1,671	-134	-7.4%
Green River	5,933	5,505	-428	-7.2%
Highline	6,116	5,706	-410	-6.7%
Lake Washington	3,313	2,838	-475	-14.3%
Lower Columbia	3,390	2,866	-523	-15.4%
Olympic	5,357	5,349	-9	-0.2%
Peninsula	1,894	1,781	-113	-6.0%
Pierce Fort Steilacoom	3,385	3,197	-188	-5.6%
Pierce Puyallup	2,252	2,108	-144	-6.4%
Renton	3,681	3,233	-448	-12.2%
Seattle Central	5,387	5,031	-355	-6.6%
Seattle North	3,907	3,655	-252	-6.4%
Seattle South	4,139	4,033	-106	-2.6%
Seattle Voc Institute	548	431	-117	-21.4%
Shoreline	4,654	4,624	-31	-0.7%
Skagit Valley	3,937	3,657	-280	-7.1%
South Puget Sound	4,004	3,778	-226	-5.6%
Spokane	5,628	5,580	-48	-0.9%
Spokane Falls	4,507	4,156	-351	-7.8%
Spokane Inst Extend Lrng	3,017	2,736	-280	-9.3%
Tacoma	4,976	5,005	29	0.6%
Walla Walla	3,153	3,048	-105	-3.3%
Wenatchee Valley	2,865	2,946	80	2.8%
Whatcom	3,101	2,959	-143	-4.6%
Yakima Valley	3,983	3,950	-32	-0.8%
<b>SYSTEM TOTAL</b>	<b>144,114</b>	<b>137,201</b>	<b>-6,914</b>	<b>-4.8%</b>

Source: SBCTC data warehouse.

Note: Totals may not add due to rounding.

## Factors Impacting Enrollments

In fall 2011, colleges enrolled 189,522 state-supported students generating 137,201 FTES, a 6.2 percent decline in headcount and a 4.8 percent decline in FTES from fall 2010.

Even with the decline this quarter it is estimated that colleges will remain over-enrolled during the 2011-12 academic year 11 percent above the legislative enrollment target, producing 155,000 state-supported FTES. However, this estimated annual enrollment level is substantially lower than 2010-11, demonstrating the combined effect of multiple factors, such as continuous budget cuts, significant tuition increases, a change in the employment outlook, and a growing change in student demographics.

### Key components of fall enrollments are:

- Worker Retraining state-supported enrollments for CTCs and private career schools produced 9,873 FTES in fall 2011, a decline of 16 percent when compared to the previous fall quarter. This decline is due to the discontinuation of Legislature-appropriated special funding for the program in July 2011.
- Workforce education as a whole generated 46,085 FTES, a decline of 6 percent from fall 2010. Nearly 40 percent of the decline in the number of workforce students served by the college system can be attributed to the decline in the Worker Retraining program.
- Colleges enrolled 55,897 FTES for students attending for transfer purposes. Transfer decreased by 1,052 FTES or approximately 2 percent lower than fall 2010.
- For the second straight year, colleges consolidated basic skills courses. In fall 2011, they enrolled 12,853 FTES, decreasing enrollments by 1,241 FTES which is 9 percent less than fall 2010 and 10 percent less than fall 2009.
- I-BEST FTES continued to decline for the second straight fall. Colleges enrolled 1,449 FTES, a decrease of 43 FTES or approximately 3 percent less than fall 2010.
- Colleges enrolled 31,684 eLearning FTES, increasing enrollments by 274 FTES or less than one percent compared to fall 2010. This minimal increase changes the previous pattern of rapid growth in eLearning over the past ten years.
- Contract-funded FTES declined by 10 percent from fall 2010 to 29,735. Running Start, a contract-funded program that allows students to earn high school and college credits, enrolled 13,086 FTES. Running Start enrollments maintained the same level as the previous fall quarter with no growth.
- Colleges enrolled 247,117 headcount students with all funds in fall 2011. This included 189,522 state-support headcount, a drop of 12,552 students from fall 2010.
- Student-funded FTES have increased by nearly 500 FTES since fall 2010, as some colleges shift state-supported courses to different funding sources to keep sections open and start new programs.

## Students by Funding Source

There were nearly a quarter million (247,117) students enrolled in community and technical colleges in fall 2011. However, like the decrease in FTES, this headcount represented a drop of nearly 8 percent from the previous fall. The percent of state-supported headcount that is full-time, typically a stable measure, decreased by 4.5 percent. Regardless, state-supported headcount at 189,522 students in fall 2011, still projects to 11 percent over-enrollment for the year.

### FALL SYSTEM HEADCOUNT\* BY FUNDING SOURCES

	2007	2008	2009	2010	2011
<b>All Funds</b>	253,817	264,112	266,659	268,005	247,117
% Change	1.0%	4.1%	1.0%	0.5%	-7.8%
<b>State Supported</b>	188,925	196,788	202,201	202,074	189,522
% Change	1.7%	4.2%	2.8%	-0.1%	-6.2%
<b>Contract Funded</b>	37,193	40,955	42,095	45,399	38,762
% Change	0.5%	10.1%	2.8%	7.8%	-14.6%
<b>Student Funded</b>	27,699	26,369	22,363	20,532	18,833
% Change	-3.3%	-4.8%	-15.2%	-8.2%	-8.3%

Source: SBCTC data warehouse, Student table.

\*Headcount is based upon an unduplicated system count. Each student is counted one time whenever they are enrolled in the system. Thus historical counts are slightly smaller than in earlier fall reports.

**STUDENT HEADCOUNT BY COLLEGE AND FUNDING SOURCE  
FALL 2011**

	<b>State Supported</b>	<b>Contract Funded</b>	<b>State and Contract Subtotal</b>	<b>Student Funded</b>	<b>All Funds Total</b>
Bates	4,442	332	4,774	322	5,096
Bellevue	12,691	2,821	15,512	3,733	19,245
Bellingham	2,753	83	2,836	796	3,632
Big Bend	2,181	167	2,348	34	2,382
Cascadia	2,702	564	3,266	23	3,289
Centralia	3,209	930	4,139	153	4,292
Clark	12,656	2,048	14,704	1,000	15,704
Clover Park	5,088	251	5,339	107	5,446
Columbia Basin	6,514	765	7,279	156	7,435
Edmonds	8,111	3,677	11,788	659	12,447
Everett	7,154	1,287	8,441	1,340	9,781
Grays Harbor	1,959	682	2,641	70	2,711
Green River	7,022	2,876	9,898	1,093	10,991
Highline	8,262	1,619	9,881	101	9,982
Lake Washington	4,358	480	4,838	243	5,081
Lower Columbia	3,640	598	4,238	387	4,625
Olympic	7,856	645	8,501	0	8,501
Peninsula	2,440	1,003	3,443	83	3,526
Pierce Fort Steilacoom	4,525	3,910	8,435	591	9,026
Pierce Puyallup	3,208	607	3,815	6	3,821
Renton	4,557	357	4,914	384	5,298
Seattle Central	6,971	1,679	8,650	956	9,606
Seattle North	6,303	816	7,119	1,346	8,465
Seattle South	6,181	830	7,011	923	7,934
Seattle Voc Institute	559	20	579	9	588
Shoreline	6,162	635	6,797	74	6,871
Skagit Valley	5,015	711	5,726	180	5,906
South Puget Sound	5,293	652	5,945	423	6,368
Spokane	6,501	424	6,925	515	7,440
Spokane Falls*	9,741	1,465	11,206	1,142	12,348
Tacoma	6,397	2,061	8,458	339	8,797
Walla Walla	3,779	2,125	5,904	111	6,015
Wenatchee Valley	3,721	556	4,277	242	4,519
Whatcom	4,264	970	5,234	1,398	6,632
Yakima Valley	5,095	593	5,688	56	5,744
<b>COLLEGE TOTAL</b>	<b>191,310</b>	<b>39,239</b>	<b>230,549</b>	<b>18,995</b>	<b>249,544</b>
<b>SYSTEM TOTAL</b>	<b>189,522</b>	<b>38,762</b>	<b>228,284</b>	<b>18,833</b>	<b>247,117</b>

Notes: Totals State includes Natural Resource Waivers, Worker Retraining and excess students. Contract Funded includes Running Start and Contract International Students.

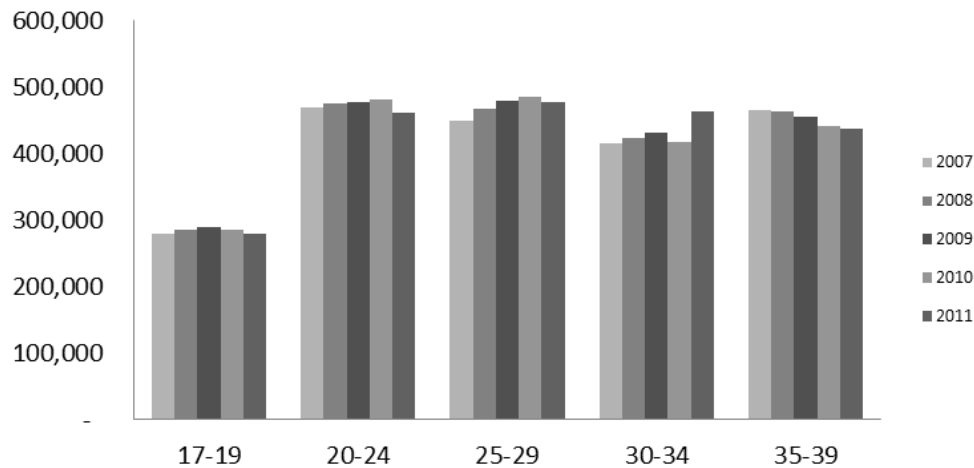
Source: SBCTC data warehouse.

\*Spokane Institute of Extended Learning student headcounts are reported in Spokane Falls totals.

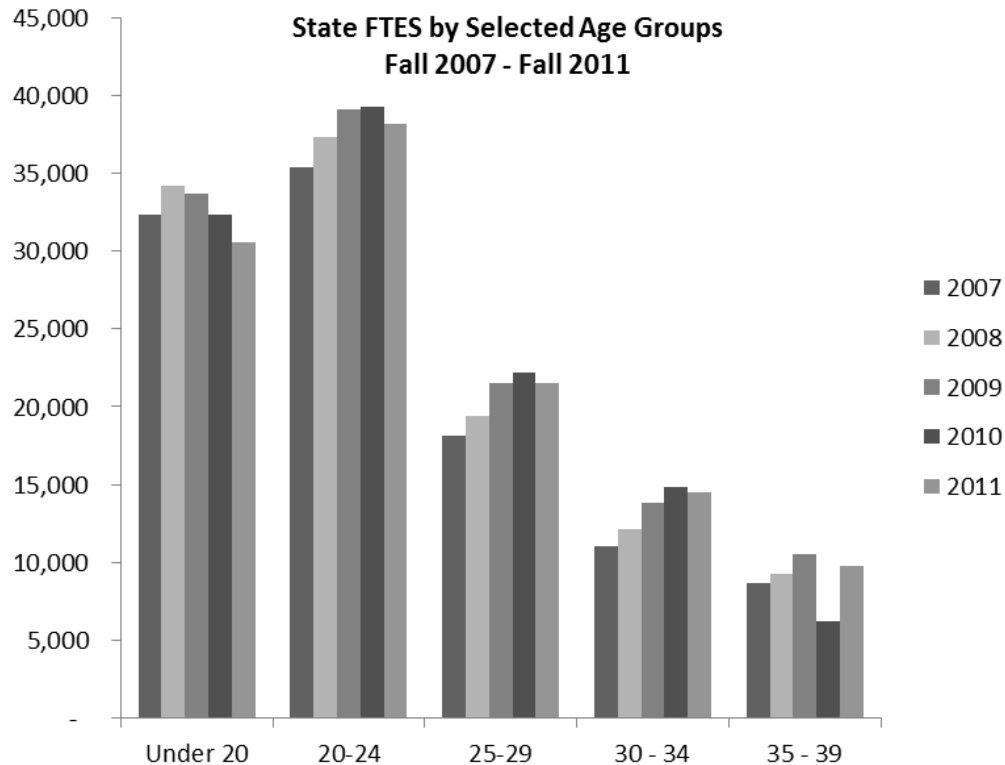
## Demographic Factors

**Population Changes:** State population dropped in all age groups between 2010 and 2011 except in the 30-34 age category.

**Washington State Population for Selected Age Groups  
2007-2011**



**Enrollment Growth:** Decline in FTES by student age group mostly mirrored state population growth. FTES in the 35-39 year age group increased despite a slight decrease in state population in this group. The only age group with FTE growth was 35-39.

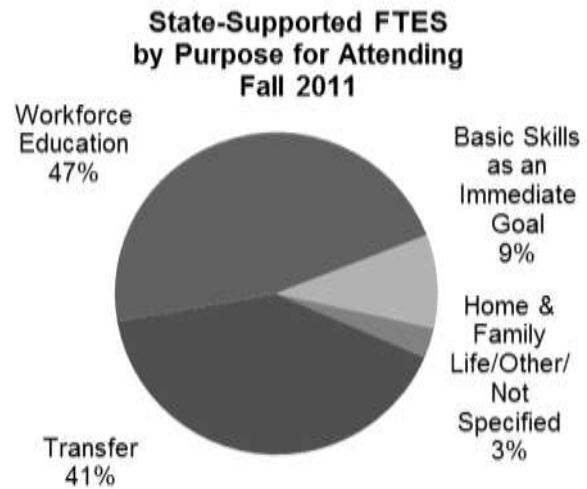


Source: SBCTC Data Warehouse and Office of Financial Management Forecast of the State Population, November 2010 forecast <http://www.ofm.wa.gov/pop/stfc/default.asp>.

## Students by Purpose for Attending

Students enrolled in fall 2011 for a variety of purposes. About 47 percent of FTES were students enrolled in workforce education (preparing for jobs or upgrading job skills), the largest workforce education enrollment ever. Transfer students comprised 41 percent of FTES by student purpose, and students attending for basic skills as an immediate goal comprised 9 percent of FTES by student purpose.

A total of 85,129 students were enrolled in workforce education courses in fall 2011. 71,785 students were enrolled with an expected purpose of college transfer. 19,420 students were enrolled in courses with basic skills as the immediate goal. The latter does not include students enrolled in basic skills classes as part of a workforce or transfer purpose. Chapter 3 provides characteristics for students by their purpose for attending.



### STUDENTS BY PURPOSE FOR ATTENDING STATE SUPPORTED

	2007	2008	2009	2010	2011
<b>Transfer Students</b>					
Headcount	65,298	67,988	70,771	72,815	71,785
FTES taken by transfer students	51,292	53,412	55,833	56,949	55,897
% of FTES	41.1%	39.9%	39.1%	39.5%	40.7%
<b>Workforce Education Students (all upgrading and job preparation)</b>					
Headcount	86,446	88,968	94,588	93,147	85,129
FTES taken by workforce students	55,993	61,021	68,472	68,590	64,310
% of FTES	44.8%	45.6%	47.9%	47.6%	46.9%
<b>Basic Skills as Immediate Goal Students</b>					
Headcount	20,589	22,546	22,146	21,486	19,420
FTES taken by basic skills students	13,263	14,776	14,360	14,094	12,853
% of FTES	10.6%	11.0%	10.0%	9.8%	9.4%
<b>Home and Family Life/ Other/Not Specified</b>					
Headcount	16,592	17,286	14,696	14,626	13,188
FTES taken by home & family life/other/not specified	4,347	4,707	4,270	4,482	4,141
% of FTES	3.5%	3.5%	3.0%	3.1%	3.0%
<b>TOTAL</b>					
Headcount	188,925	196,788	202,201	202,074	189,522
FTES	124,895	133,917	142,935	144,114	137,201

Source: SBCTC data warehouse.

Note: Students based upon an unduplicated system count. Each student is counted one time whenever they are enrolled in the system. Thus historical counts are slightly smaller than in earlier fall reports.

Note: Totals may not add due to rounding



**FTES BY STUDENT PURPOSE FOR ATTENDING  
STATE SUPPORTED  
FALL 2011**

	<b>Workforce Education</b>	<b>Transfer</b>	<b>Basic Skills as Immediate Goal</b>	<b>Home and Family Life/ Other/Not Specified</b>	<b>Total</b>
Bates	2,993	10	263	482	3,748
Bellevue	2,854	4,790	432	498	8,574
Bellingham	1,994	13	61	45	2,113
Big Bend	930	647	106	5	1,689
Cascadia	264	1,543	165	17	1,989
Centralia	856	809	248	170	2,084
Clark	3,286	4,519	634	94	8,533
Clover Park	3,567	48	230	269	4,115
Columbia Basin	1,812	2,234	440	19	4,504
Edmonds	2,090	2,466	437	198	5,191
Everett	2,055	2,133	582	48	4,818
Grays Harbor	855	556	227	33	1,671
Green River	2,060	2,567	795	83	5,505
Highline	1,614	2,304	1,730	58	5,706
Lake Washington	2,353	280	134	70	2,837
Lower Columbia	1,385	996	437	47	2,866
Olympic	2,755	2,308	183	102	5,349
Peninsula	877	712	148	44	1,781
Pierce Fort Steilacoom	1,481	1,636	45	36	3,197
Pierce Puyallup	823	1,131	129	24	2,108
Renton	2,363	162	613	94	3,233
Seattle Central	2,306	2,137	453	136	5,031
Seattle North	1,584	1,576	341	154	3,655
Seattle South	1,886	1,242	847	57	4,033
Seattle Voc Institute	353	1	77	0	431
Shoreline	1,790	2,043	322	469	4,624
Skagit Valley	1,960	1,461	168	68	3,657
South Puget Sound	1,619	1,860	154	145	3,778
Spokane Community	3,998	1,495	14	73	5,580
Spokane Falls	1,105	2,913	19	119	4,156
Spokane IEL	1,033	508	983	212	2,736
Tacoma	1,825	2,860	275	45	5,005
Walla Walla	1,683	1,124	157	84	3,048
Wenatchee Valley	1,231	1,523	188	3	2,946
Whatcom	978	1,809	128	44	2,959
Yakima Valley	1,690	1,479	687	94	3,950
<b>SYSTEM TOTAL</b>	<b>64,310</b>	<b>55,897</b>	<b>12,853</b>	<b>4,141</b>	<b>137,200</b>

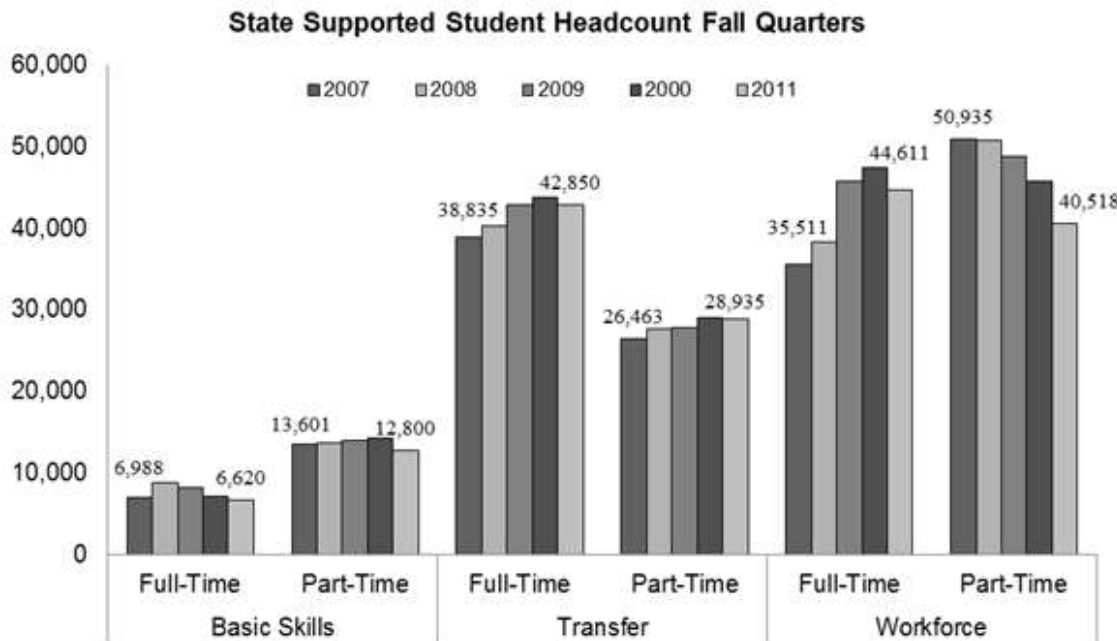
Source: SBCTC data warehouse by Kind of Student.

Note: Totals may not add due to rounding.

## Full-Time and Part-Time Status

State-supported full-time FTES enrollment decreased 4.6 percent in fall 2011. Headcount enrollment decreased 4.5 percent.

Part-time FTES enrollments decreased 5.3 percent as part-time headcount decreased nearly 8 percent.



### FULL-TIME AND PART-TIME STATUS ALL STATE SUPPORTED

	2007	2008	2009	2010	2011
<b>Full-Time Students</b>					
Headcount	82,602	88,930	98,456	100,067	95,530
% Change	-0.2%	7.7%	10.7%	1.6%	-4.5%
% Full-Time	43.7%	45.2%	48.7%	49.5%	50.4%
FTES	84,175	90,888	99,678	100,204	95,601
% Change	-1.1%	8.0%	9.7%	0.5%	-4.6%
Average credits	15.4	15.4	15.2	15.1	15.1
Students per 100 FTES	98.1	97.8	98.8	99.9	99.9
<b>Part-Time Students</b>					
Headcount	106,323	107,858	103,745	102,007	93,992
% Change	3.3%	1.4%	-3.8%	-1.7%	-7.9%
% Part-Time	56.3%	54.8%	51.3%	50.5%	49.6%
FTES	40,719	43,028	43,257	43,910	41,599
% Change	5.9%	5.7%	0.5%	1.5%	-5.3%
Average credits	5.7	5.9	6.2	6.4	6.6
Students per 100 FTES	261.1	250.7	239.8	232.3	225.9

Source: SBCTC data warehouse.  
Full-time student equals 12 credits or more credits.

**FULL-TIME AND PART-TIME STATUS  
STATE SUPPORTED  
FALL 2011**

	Full-Time			Part-Time			TOTAL FTES
	Headcount	FTES	% of FTES	Headcount	FTES	% of FTES	
Bates	2,002	2,732	73%	2,440	1,017	27%	3,748
Bellevue	5,352	5,206	61%	7,339	3,367	39%	8,574
Bellingham	1,400	1,621	77%	1,353	493	23%	2,113
Big Bend	1,353	1,322	78%	828	367	22%	1,689
Cascadia	1,270	1,266	64%	1,432	723	36%	1,989
Centralia	1,624	1,603	77%	1,585	481	23%	2,084
Clark	6,316	5,764	68%	6,340	2,769	32%	8,533
Clover Park	2,651	3,243	79%	2,437	872	21%	4,115
Columbia Basin	2,979	2,880	64%	3,535	1,624	36%	4,504
Edmonds	3,155	3,041	59%	4,956	2,150	41%	5,191
Everett	3,387	3,106	64%	3,767	1,712	36%	4,818
Grays Harbor	1,410	1,419	85%	549	251	15%	1,671
Green River	4,277	4,217	77%	2,745	1,288	23%	5,505
Highline	2,925	2,812	49%	5,337	2,894	51%	5,706
Lake Washington	1,968	2,026	71%	2,390	812	29%	2,837
Lower Columbia	2,173	2,189	76%	1,467	678	24%	2,866
Olympic	4,082	3,772	71%	3,774	1,576	29%	5,349
Peninsula	1,341	1,356	76%	1,099	425	24%	1,781
Pierce Fort Steilacoom	2,133	2,072	65%	2,392	1,125	35%	3,197
Pierce Puyallup	1,104	1,080	51%	2,104	1,028	49%	2,108
Renton	1,924	2,319	72%	2,633	914	28%	3,233
Seattle Central	3,329	3,327	66%	3,642	1,704	34%	5,031
Seattle North	1,953	1,935	53%	4,350	1,720	47%	3,655
Seattle South	2,681	2,641	65%	3,500	1,392	35%	4,033
Seattle Voc Institute	290	375	87%	269	55	13%	431
Shoreline	3,359	3,433	74%	2,803	1,191	26%	4,624
Skagit Valley	2,658	2,596	71%	2,357	1,061	29%	3,657
So Puget Sound	2,645	2,583	68%	2,648	1,196	32%	3,778
Spokane	4,421	4,532	81%	2,080	1,048	19%	5,580
Spokane Falls	5,282	3,432	83%	4,459	724	17%	4,156
Spokane IEL*		1,961	72%		776	28%	2,736
Tacoma	3,978	3,805	76%	2,419	1,200	24%	5,005
Walla Walla	2,380	2,536	83%	1,399	512	17%	3,048
Wenatchee Valley	2,402	2,298	78%	1,319	647	22%	2,946
Whatcom	2,275	2,021	68%	1,989	937	32%	2,959
Yakima Valley	3,084	2,988	76%	2,011	962	24%	3,950
<b>COLLEGE TOTAL</b>	95,563	95,509	70%	95,747	41,692	30%	137,200
<b>SYSTEM TOTAL</b>	95,530			93,992			189,522

Source: SBCTC data warehouse.

\*Students enrolled in Spokane IEL are included in the Spokane Falls headcount.



