

Staff

Introduction to Personnel Fall 2010 through Fall 2014

NUMBER OF STATE SUPPORTED COMMUNITY AND TECHNICAL COLLEGE EMPLOYEES

State Supported Headcount	2010	2011	2012	2013	2014	5 Year % Change
Full-Time Faculty (Teaching and Non-Teaching)	3,611	3,444	3,431	3,526	3,591	-0.6%
Part-Time Faculty (Teaching and Non-Teaching)	5,938	5,811	5,692	5,650	5,582	-6.0%
Classified/Support	4,041	3,817	3,605	3,993	4,093	1.3%
Professional/Technical	1,299	1,232	1,221	1,356	1,464	12.7%
Administrative	736	721	736	797	816	10.9%
TOTAL STAFF	15,625	15,025	14,685	15,322	15,546	-0.5%

STATE SUPPORTED EMPLOYEE DEMOGRAPHICS

Percent of Staff of Color	2010	2011	2012	2013	2014
Classified/Support	23%	23%	23%	24%	25%
Administrative/Professional	17%	16%	17%	18%	19%
Full-Time Faculty (Teaching and Non-Teaching)	14%	15%	14%	15%	16%
Part-Time Faculty (Teaching and Non-Teaching)	11%	11%	11%	12%	12%

Percent Female Staff	2010	2011	2012	2013	2014
Classified/Support	63%	62%	62%	61%	61%
Administrative/Professional	66%	65%	66%	66%	66%
Full-Time Faculty (Teaching and Non-Teaching)	52%	52%	53%	53%	53%
Part-Time Faculty (Teaching and Non-Teaching)	62%	61%	61%	61%	60%

Source: SBCTC data warehouse, PMIS, EMPYRQ Table. Excludes SBCTC and SBCTC-IT.
Note: Percentages may not total 100 due to rounding.

**HEADCOUNT OF COMMUNITY AND TECHNICAL COLLEGE EMPLOYEES STATE SUPPORTED
FALL 2014**

	Teaching Faculty		Non-Teaching Faculty		Classified Headcount	Administrative Headcount	Professional/ Technical Headcount	Total Headcount
	Full- Time	Part- Time	Full- Time	Part- Time				
Bates	95	15	17	51	84	11	12	285
Bellevue	175	361	10	39	188	38	140	951
Bellingham	66	80	1	1	73	21	39	281
Big Bend	47	75	4	1	59	14	32	232
Cascadia	38	84	4	0	34	17	21	198
Centralia	62	94	9	9	69	35	34	312
Clark	190	402	9	1	270	42	40	954
Clover Park	84	90	4	0	113	12	15	318
Columbia Basin	121	129	5	0	115	25	52	447
Edmonds	120	251	5	10	162	39	63	650
Everett	112	197	11	0	190	37	25	572
Grays Harbor	48	57	2	9	45	8	23	192
Green River	148	240	6	5	165	23	76	663
Highline	146	206	14	3	117	24	62	572
Lake Washington	76	161	3	0	94	10	0	344
Lower Columbia	65	121	1	1	81	16	41	326
Olympic	114	230	8	0	139	29	31	551
Peninsula	45	98	1	2	46	19	31	242
Pierce District	0	0	0	9	47	10	19	85
Pierce Fort Steilacoom	70	150	4	0	108	9	17	358
Pierce Puyallup	52	99	7	0	66	6	10	240
Renton	71	125	5	0	86	26	22	335
Seattle District	0	0	0	0	29	8	30	67
Seattle Central	135	281	9	8	163	26	35	657
Seattle North	82	227	4	5	118	25	42	503
Seattle South	88	200	2	3	113	37	33	476
Seattle Voc Institute	7	24	0	2	13	3	8	57

HEADCOUNT OF COMMUNITY AND TECHNICAL COLLEGE EMPLOYEES STATE SUPPORTED (cont)

	Teaching Faculty		Non-Teaching Faculty		Classified Headcount	Administrative Headcount	Professional/ Technical Headcount	Total Headcount
	Full- Time	Part- Time	Full- Time	Part- Time				
Shoreline	110	257	11	10	150	33	19	590
Skagit Valley	106	146	6	19	124	24	33	458
South Puget Sound	92	139	5	0	123	10	50	419
Spokane District	0	0	2	0	96	21	26	145
Spokane	208	287	16	3	168	19	32	733
Spokane Falls	136	149	7	3	122	14	19	450
Tacoma	126	237	3	7	119	26	68	586
Walla Walla	92	160	3	1	97	22	58	433
Wenatchee Valley	72	152	6	0	79	13	33	355
Whatcom	72	146	4	5	77	34	28	366
Yakima Valley	117	156	7	14	118	21	36	469
SBCTC	0	0	0	0	34	12	116	162
SYSTEM TOTAL	3,388	5,826	215	221	4,094	819	1,471	16,034
UNDUPLICATED SYSTEM TOTAL	3,376	5,382	215	200	4,093	816	1,464	15,546

**HEADCOUNT OF COMMUNITY AND TECHNICAL COLLEGE EMPLOYEES
ALL FUNDS
FALL 2014**

	<u>Teaching Faculty</u>		<u>Non-Teaching Faculty</u>		<u>Classified Headcount</u>	<u>Adminis- trative Headcount</u>	<u>Professional/ Technical Headcount</u>	<u>Total Headcount</u>
	<u>Full-Time</u>	<u>Part-Time</u>	<u>Full-Time</u>	<u>Part-Time</u>				
Bates	95	24	22	68	119	11	23	362
Bellevue	182	603	10	52	262	43	171	1,323
Bellingham	66	100	1	1	78	22	40	308
Big Bend	47	83	4	8	74	18	42	276
Cascadia	38	98	4	0	35	18	23	216
Centralia	67	109	9	24	88	35	38	370
Clark	193	423	9	1	350	49	51	1,076
Clover Park	84	99	5	4	143	12	15	362
Columbia Basin	124	141	5	5	129	29	63	496
Edmonds	133	306	6	11	261	50	131	898
Everett	115	265	11	1	228	50	32	702
Grays Harbor	58	64	2	10	52	8	24	218
Green River	152	318	6	7	197	25	105	810
Highline	148	208	15	3	138	30	97	639
Lake Washington	80	171	3	1	122	11	1	389
Lower Columbia	65	131	1	1	146	25	56	425
Olympic	114	244	9	2	167	31	37	604
Peninsula	46	122	2	4	53	21	37	285
Pierce District	0	0	0	10	52	10	21	93
Pierce Fort Steilacoom	77	248	6	0	126	12	28	497
Pierce Puyallup	52	99	7	0	67	6	11	242
Renton	72	128	9	0	105	26	39	379
Seattle District	0	0	0	0	29	10	37	76
Seattle Central	163	344	12	10	209	33	53	824
Seattle North	85	282	4	8	139	29	58	605
Seattle South	93	240	2	3	135	46	50	569
Seattle Voc Institute	7	24	0	2	13	3	12	61

HEADCOUNT OF COMMUNITY AND TECHNICAL COLLEGE EMPLOYEES (cont)

	<u>Teaching Faculty</u>		<u>Non-Teaching Faculty</u>		Classified Headcount	Adminis- trative Headcount	Professional/ Technical Headcount	Total Headcount
	Full- Time	Part- Time	Full- Time	Part- Time				
Shoreline	110	263	12	10	166	36	24	621
Skagit Valley	107	157	6	20	186	25	46	547
South Puget Sound	92	159	5	3	139	11	56	465
Spokane District	0	0	2	0	186	28	44	260
Spokane	219	331	16	4	200	20	39	829
Spokane Falls	139	158	8	3	147	14	24	493
Tacoma	134	241	3	8	141	29	84	640
Walla Walla	117	203	4	1	114	24	82	545
Wenatchee Valley	72	171	6	0	83	14	40	386
Whatcom	73	169	4	5	87	41	53	432
Yakima Valley	117	159	7	20	141	21	40	505
 SBCTC	 0	 0	 0	 0	 37	 12	 127	 176
 SYSTEM TOTAL	 3,536	 6,885	 237	 310	 5,144	 938	 1,954	 19,004
 UNDUPLICATED SYSTEM TOTAL	 3,524	 6,331	 237	 283	 5,143	 935	 1,945	 18,398

**COMMUNITY AND TECHNICAL COLLEGE EMPLOYEES FTE
STATE SUPPORTED
FALL 2014**

	Classified FTE	Administrative FTE	Professional/ Technical FTE	Teaching Faculty FTE	Non-Teaching Faculty FTE	Total FTE
Bates	79	10	11	84	26	210
Bellevue	180	36	140	411	42	808
Bellingham	70	20	35	84	3	213
Big Bend	57	14	30	85	4	190
Cascadia	33	17	21	100	3	175
Centralia	63	35	31	100	10	239
Clark	249	40	36	413	26	763
Clover Park	108	12	15	140	7	282
Columbia Basin	111	24	48	197	13	393
Edmonds	159	35	61	270	12	537
Everett	179	37	24	268	20	527
Grays Harbor	44	8	17	75	14	158
Green River	158	23	69	341	15	605
Highline	112	24	59	259	28	482
Lake Washington	89	10	0	146	5	249
Lower Columbia	75	16	37	139	2	268
Olympic	132	29	29	247	19	457
Peninsula	44	18	31	90	10	193
Pierce District	46	10	17	1	2	75
Pierce Fort Steilacoom	107	9	14	151	13	294
Pierce Puyallup	65	6	9	113	9	201
Renton	79	26	20	125	7	257
Seattle District	28	8	29	0	0	65
Seattle Central	157	25	32	265	15	494
Seattle North	108	23	38	192	9	370
Seattle South	108	31	31	171	9	351
Seattle Voc Institute	13	2	6	20	0	41

COMMUNITY AND TECHNICAL COLLEGE EMPLOYEES FTE STATE SUPPORTED (cont)

	Classified	Administrative	Professional/ Technical	Teaching Faculty	Non-Teaching Faculty	Total
	FTE	FTE	FTE	FTE	FTE	FTE
Shoreline	145	30	18	254	24	472
Skagit Valley	117	25	31	187	28	388
South Puget Sound	118	10	48	180	10	367
Spokane District	94	20	26	0	2	142
Spokane	159	19	32	378	29	617
Spokane Falls	118	14	17	235	20	404
Tacoma	116	26	65	254	26	486
Walla Walla	94	22	54	162	7	340
Wenatchee Valley	74	13	29	152	9	277
Whatcom	74	31	23	152	15	295
Yakima Valley	110	20	32	181	20	362
SBCTC	33	12	112	0	0	157
SYSTEM TOTAL	3,904	791	1,375	6,620	514	13,204
% of Total	30%	6%	10%	50%	4%	

Source: SBCTC Data Warehouse, PMIS, EMPYRQ Table and SR2102 for Teaching Faculty

**COMMUNITY AND TECHNICAL COLLEGE EMPLOYEES FTE
ALL FUNDS
FALL 2014**

	Classified FTE	Administrative FTE	Professional/ Technical FTE	Teaching Faculty FTE	Non-Teaching Faculty FTE	Total FTE
Bates	116	11	23	85	40	275
Bellevue	257	44	182	477	45	1,005
Bellingham	76	22	39	87	3	228
Big Bend	73	19	46	86	6	230
Cascadia	34	18	23	114	3	192
Centralia	84	36	37	106	15	277
Clark	294	50	50	418	32	844
Clover Park	141	12	15	142	17	327
Columbia Basin	126	30	67	206	15	444
Edmonds	258	52	133	334	16	792
Everett	223	50	30	304	23	631
Grays Harbor	52	8	19	87	16	181
Green River	193	25	106	380	21	724
Highline	135	30	97	263	49	574
Lake Washington	118	11	1	154	7	290
Lower Columbia	141	25	56	141	5	368
Olympic	166	33	36	249	21	505
Peninsula	52	22	39	101	11	226
Pierce District	52	10	21	1	2	86
Pierce Fort Steilacoom	125	13	28	219	18	402
Pierce Puyallup	66	6	11	113	10	206
Renton	95	27	38	129	15	304
Seattle District	29	10	37	0	0	76
Seattle Central	206	33	53	275	72	638
Seattle North	134	29	58	194	28	444
Seattle South	135	47	51	180	30	442
Seattle Voc Institute	13	3	12	20	0	48

COMMUNITY AND TECHNICAL COLLEGE EMPLOYEES FTE ALL FUNDS (cont)

	Classified FTE	Administrative FTE	Professional/ Technical FTE	Teaching Faculty FTE	Non-Teaching Faculty FTE	Total FTE
Shoreline	162	35	22	264	25	508
Skagit Valley	178	27	47	187	31	470
South Puget Sound	137	11	56	184	11	399
Spokane District	186	28	46	0	2	262
Spokane	199	20	39	400	31	690
Spokane Falls	146	14	24	245	23	451
Tacoma	140	29	87	264	30	551
Walla Walla	113	25	82	216	9	445
Wenatchee Valley	79	14	40	155	9	298
Whatcom	86	42	38	176	17	359
Yakima Valley	138	22	39	182	39	421
 SBCTC	 37	 12	 126	 0	 0	 175
SYSTEM TOTAL	4,994	953	1,955	7,138	748	15,788
% of Total	32%	6%	12%	45%	5%	

Source: SBCTC Data Warehouse, PMIS, EMPYRQ Table and SR2102 for Teaching Faculty

**Teaching Faculty
Fall 2010 through Fall 2014**

STATE SUPPORTED FTE FACULTY

	2010	2011	2012	2013	2014
Full-Time Teaching FTE Faculty					
Faculty, Regular Assignment	3,119	2,990	2,943	3,018	3,118
% Regular Assignment	47%	46%	46%	46%	47%
Moonlight (non-regular assignment)	453	429	450	479	489
TOTAL Full-Time	3,572	3,419	3,393	3,497	3,607
% Full-Time	53%	52%	53%	53%	54%
% Change	1.2%	-4.3%	-0.7%	3.1%	3.2%
Part-Time Teaching FTE Faculty					
Part-time Only	3,096	3,090	3,006	3,079	3,064
Other Staff, Teaching Part-Time	9	8	6	10	0
TOTAL Part-Time	3,105	3,099	3,012	3,089	3,064
% Part-Time	47%	48%	47%	47%	46%
% Change	5.3%	-0.2%	-2.8%	2.6%	-0.8%
TOTAL Teaching FTE Faculty on Payroll	6,677	6,518	6,405	6,585	6,671
% Change	3.0%	-2.4%	-1.7%	2.8%	1.3%
Contracted Out and Volunteer FTE Faculty (not on College Payroll)					
Contracted Out	291	297	312	341	319
Volunteer	121	120	129	131	117
TOTAL Teaching Faculty (on and not on Payroll)					
Teaching FTE Faculty Total	7,088	6,935	6,846	7,058	7,107
% Change	3.2%	-2.2%	-1.3%	3.1%	0.7%
Non-Teaching FTE Faculty					
Counselors/Librarians/Release Time	499	484	486	538	514
TOTAL Teaching and Non-Teaching FTE Faculty	7,588	7,419	7,332	7,596	7,621
% Change	2.8%	-2.2%	-1.2%	3.6%	0.7%

Source: Non-Teaching Faculty and Part-Time only: SBCTC data warehouse, PMIS PROGRAM Table, Teaching Indicator
 Note: Totals may not add to 100 percent due to rounding.

**TEACHING FACULTY (FTE-F) BY EMPLOYMENT STATUS
STATE SUPPORTED
FALL 2014**

	<u>Full-Time</u>		<u>Moonlight</u>		<u>Part-Time</u>		Total Teaching Faculty on Payroll	Contracted Out	Volunteer
	#	% of Total	#	% of Total	#	% of Total			
	Bates	84	98%	0	0%	2			
Bellevue	166	40%	20	5%	228	55%	414	2	5
Bellingham	61	72%	1	1%	23	27%	85	0	8
Big Bend	46	51%	12	13%	32	35%	90	0	2
Cascadia	38	38%	4	4%	58	58%	100	1	0
Centralia	56	53%	15	14%	35	33%	105	0	2
Clark	172	41%	26	6%	217	52%	415	0	5
Clover Park	80	58%	3	2%	56	40%	140	3	3
Columbia Basin	109	54%	25	12%	69	34%	203	0	8
Edmonds	114	42%	14	5%	143	53%	272	1	6
Everett	103	38%	30	11%	137	51%	269	2	7
Grays Harbor	42	56%	11	15%	22	29%	75	5	4
Green River	143	42%	40	12%	159	46%	342	0	1
Highline	135	52%	13	5%	111	43%	258	25	4
Lake Washington	74	51%	3	2%	69	47%	146	9	1
Lower Columbia	65	47%	9	6%	65	47%	139	0	5
Olympic	102	41%	30	12%	117	47%	249	3	9
Peninsula	40	43%	13	14%	40	43%	93	4	5
Pierce Fort Steilacoom	57	37%	11	7%	86	56%	154	1	0
Pierce Puyallup	45	39%	7	6%	62	54%	113	1	0
Renton	67	54%	3	2%	55	44%	125	64	0
Seattle Central	126	47%	8	3%	132	50%	266	1	8
Seattle North	77	40%	9	5%	107	55%	193	2	2
Seattle South	78	45%	11	6%	83	48%	172	45	1
Seattle Voc Institute	7	35%	1	3%	12	62%	20	1	1

TEACHING FACULTY (FTE-F) BY EMPLOYMENT STATUS (cont)

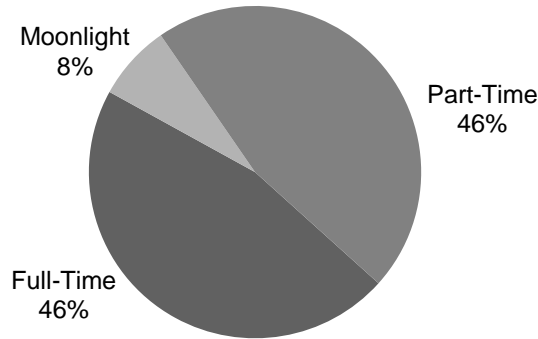
	Full-Time		Moonlight		Part-Time		Total Teaching Faculty on Payroll	Contracted Out	Volunteer
	#	% of Total	#	% of Total	#	% of Total			
Shoreline	101	40%	10	4%	142	56%	253	7	6
Skagit Valley	86	46%	16	8%	85	46%	187	31	0
South Puget Sound	89	49%	7	4%	84	46%	181	3	10
Spokane	193	51%	50	13%	135	36%	378	15	4
Spokane Falls	121	52%	27	11%	86	37%	234	2	1
Tacoma	119	45%	19	7%	124	48%	262	11	4
Walla Walla	89	53%	11	6%	67	40%	167	1	1
Wenatchee Valley	69	44%	17	11%	69	44%	156	2	1
Whatcom	65	43%	3	2%	84	55%	152	1	1
Yakima Valley	101	56%	11	6%	69	38%	181	0	2
COLLEGE TOTAL	3,118	47%	489	7%	3,064	46%	6,671	319	117

Source: SBCTC data warehouse and SR2102, Version 1.

Note: FTE-F full-time may be different from the count of full-time faculty on previous page because SR2102 included teaching FTE-F of exempt staff.

Teaching Faculty by Course Area Fall 2010 through Fall 2014

Teaching Faculty FTE-F State Supported



STATE SUPPORTED FTE-F BY EMPLOYMENT STATUS BY COURSE AREA

	2010	2011	2012	2013	2014	% Change from 2013
Academic						
Full-time	1,376	1,331	1,328	1,378	1,451	5.3%
Moonlight	237	214	229	234	246	5.2%
Part-time	1,388	1,429	1,425	1,449	1,428	-1.4%
TOTAL	3,001	2,974	2,982	3,061	3,126	2.1%
% Full-time/Moonlight	54%	52%	52%	53%	54%	
Workforce						
Full-time	1,333	1,263	1,233	1,259	1,284	2.0%
Moonlight	174	167	171	191	194	1.2%
Part-time	958	941	896	900	942	4.6%
TOTAL	2,465	2,372	2,299	2,350	2,419	3.0%
% Full-time/Moonlight	61%	60%	61%	62%	61%	
Pre-College						
Full-time	249	237	228	221	221	0.1%
Moonlight	32	37	40	42	36	-14.9%
Part-time	333	333	312	305	273	-10.3%
TOTAL	614	608	580	567	530	-6.6%
% Full-time/Moonlight	46%	45%	46%	46%	48%	
Basic Skills						
Full-time	161	159	154	160	163	1.5%
Moonlight	10	10	11	11	13	18.6%
Part-time	426	396	379	436	421	-3.4%
TOTAL	597	564	544	607	597	-1.7%
% Full-time/Moonlight	29%	30%	30%	28%	30%	

Source: SBCTC Data Warehouse Course table using Instit_Intent_Recat.

Note: Totals may not add to 100 percent due to rounding. Excludes 131 FTE-F volunteer faculty and 341 contracted-out..

Teaching and Non-Teaching Faculty Demographics
Fall 2010 through Fall 2014
TEACHING AND NON-TEACHING FACULTY (HEADCOUNT)
STATE SUPPORTED

	2010	2011	2012	2013	2014
Full-Time					
Asian/Pacific Islander	224	216	214	241	244
African American	107	102	99	106	111
Native American	63	60	55	51	58
Hispanic	123	117	111	126	136
Other Race	2	3	2	3	4
TOTAL Of Color (Full-Time)	519	498	481	527	553
% Of Color	14%	15%	14%	15%	16%
White	3,072	2,935	2,937	2,986	3,009
Total Reporting	3,591	3,433	3,418	3,513	3,562
Not Reporting Race	20	11	13	13	29
Part-Time					
Asian/Pacific Islander	299	290	262	282	286
African American	133	140	129	129	137
Native American	41	37	43	48	39
Hispanic	168	161	171	200	207
Other Race	5	3	8	6	5
TOTAL Of Color (Part-Time)	646	631	613	665	674
% Of Color	11%	11%	11%	12%	12%
White	5,195	5,100	4,993	4,901	4,810
Total Reporting	5,841	5,731	5,606	5,566	5,484
Not Reporting Race	97	80	86	84	98
Full-Time					
Number Female	1,877	1,803	1,808	1,866	1,916
% Female	52%	52%	53%	53%	53%
Part-Time					
Number Female	3,659	3,541	3,455	3,470	3,369
% Female	62%	61%	61%	61%	60%
TOTAL					
Number Female	5,536	5,344	5,263	5,336	5,285
% Female	58%	58%	58%	58%	58%

Source: SBCTC data warehouse, PMIS, EMPYRQ Table.

**TEACHING AND NON-TEACHING FACULTY OF COLOR (HEADCOUNT)
STATE SUPPORTED
FALL 2014**

	<u>Full-Time</u>		<u>Part-Time</u>		<u>Total</u>	
	Faculty Of Color	% of Total	Faculty Of Color	% of Total	Faculty Of Color	% of Total
Bates	14	13%	4	6%	18	10%
Bellevue	41	22%	85	21%	126	22%
Bellingham	4	6%	2	2%	6	4%
Big Bend	4	8%	11	14%	15	12%
Cascadia	8	19%	14	17%	22	17%
Centralia	2	3%	8	8%	10	6%
Clark	22	11%	36	9%	58	10%
Clover Park	7	8%	9	10%	16	9%
Columbia Basin	21	17%	21	16%	42	16%
Edmonds	25	20%	30	11%	55	14%
Everett	14	11%	15	8%	29	9%
Grays Harbor	1	2%	4	6%	5	4%
Green River	22	14%	35	14%	57	14%
Highline	52	33%	39	19%	91	25%
Lake Washington	17	22%	22	14%	39	16%
Lower Columbia	4	6%	4	3%	8	4%
Olympic	21	17%	13	6%	34	10%
Peninsula	7	15%	7	7%	14	10%
Pierce Fort Steilacoom	11	15%	8	5%	19	8%
Pierce Puyallup	6	10%	4	4%	10	6%
Renton	13	17%	24	19%	37	18%
Seattle Central	41	28%	71	25%	112	26%
Seattle North	27	31%	44	19%	71	22%
Seattle South	30	33%	45	22%	75	26%
Seattle Voc Institute	3	43%	12	46%	15	45%
Shoreline	20	17%	38	14%	58	15%
Skagit Valley	7	6%	14	8%	21	8%
South Puget Sound	11	11%	12	9%	23	10%
Spokane	13	6%	9	3%	22	4%
Spokane Falls	17	12%	9	6%	26	9%
Tacoma	23	18%	23	9%	46	12%
Walla Walla	7	7%	16	10%	23	9%
Wenatchee Valley	12	15%	14	9%	26	11%
Whatcom	11	14%	13	9%	24	11%
Yakima Valley	15	12%	20	12%	35	12%
COLLEGE TOTAL	553	15%	735	12%	1,288	13%
SYSTEM TOTAL	553	15%	674	12%	1,227	13%

Source: SBCTC data warehouse.

Note: Report counted only those employed as teaching faculty and excluded those who taught but were also employed as staff in a capacity other than faculty.

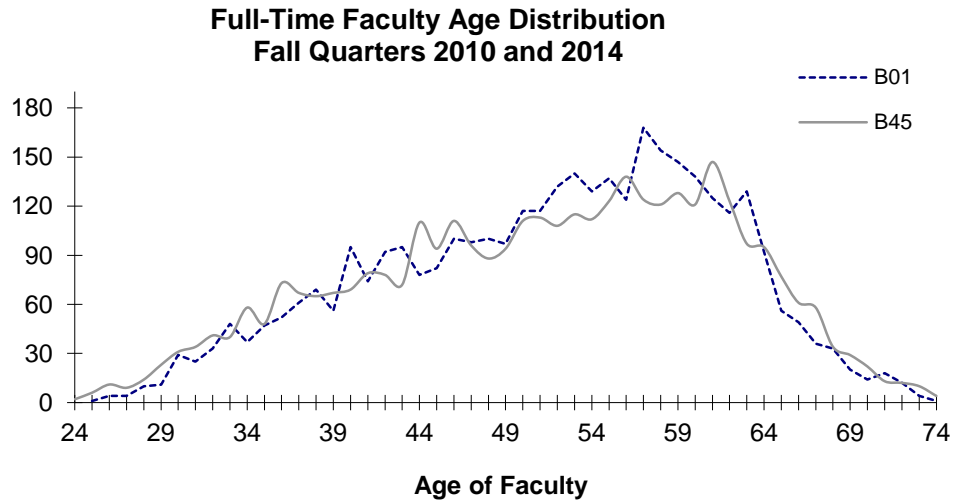
**FEMALE TEACHING AND NON-TEACHING FACULTY (HEADCOUNT)
STATE SUPPORTED
FALL 2014**

	Full-Time Faculty		Part-Time Faculty		All Faculty	
	Female	% of Total Faculty	Female	% of Total Faculty	Female	% of Total Faculty
Bates	43	38%	21	32%	64	36%
Bellevue	103	56%	246	62%	349	60%
Bellingham	31	46%	56	69%	87	59%
Big Bend	20	39%	41	54%	61	48%
Cascadia	22	52%	49	58%	71	56%
Centralia	38	54%	60	58%	98	56%
Clark	124	62%	224	56%	348	58%
Clover Park	50	57%	52	58%	102	57%
Columbia Basin	63	50%	72	56%	135	53%
Edmonds	71	57%	173	66%	244	63%
Everett	65	53%	119	60%	184	58%
Grays Harbor	24	48%	34	52%	58	50%
Green River	79	51%	136	56%	215	54%
Highline	87	54%	117	56%	204	55%
Lake Washington	40	51%	110	68%	150	63%
Lower Columbia	33	50%	82	67%	115	61%
Olympic	66	54%	123	53%	189	54%
Peninsula	20	43%	59	59%	79	54%
Pierce District	0	0%	6	67%	6	67%
Pierce Fort Steilacoom	42	57%	104	69%	146	65%
Pierce Puyallup	33	56%	60	61%	93	59%
Renton	36	4%	78	62%	114	57%
Seattle Central	72	50%	171	59%	243	56%
Seattle North	51	59%	152	66%	203	64%
Seattle South	41	46%	100	49%	141	48%
Seattle Voc Institute	5	71%	16	62%	21	64%
Shoreline	75	62%	168	63%	243	63%
Skagit Valley	68	61%	99	60%	167	60%
South Puget Sound	50	52%	88	63%	138	58%
Spokane	2	100%	0	0%	2	100%
Spokane Falls	112	50%	192	66%	304	59%
Tacoma	78	55%	78	51%	156	53%
Walla Walla	77	60%	154	63%	231	62%
Wenatchee Valley	50	53%	102	63%	152	59%
Whatcom	35	45%	103	68%	138	60%
Yakima Valley	48	63%	99	66%	147	65%
COLLEGE TOTAL	1,923	53%	3,644	60%	5,567	58%
SYSTEM TOTAL	1,916	53%	3,369	60%	5,285	58%

Source: SBCTC data warehouse.

Note: Report counted only those employed as teaching faculty and excluded those who taught but were also employed as staff in a capacity other than faculty.

Full-Time Faculty Demographics Fall 2010 through Fall 2014



FULL-TIME FACULTY AGE DISTRIBUTION STATE SUPPORTED FALL QUARTERS

Age	2010	2011	2012	2013	2014
Under 30	28	27	30	44	62
30 - 39	430	399	422	448	489
40 - 49	862	839	826	826	840
50 - 59	1295	1202	1164	1128	1130
60 - 69	752	756	750	822	788
70+	52	52	59	64	73
Total	3,419	3,275	3,251	3,332	3,382
Median Age	52	53	53	53	52

Source: SBCTC PMIS Database, PMIS EMPYRQ Table.

**Classified Staff FTE State-Supported
Fall 2010 through Fall 2014**

CLASSIFIED STAFF FTE

	2010	2011	2012	2013	2014
EMPLOYMENT STATUS					
Full-Time	3,728	3,518	3,299	3,691	3,789
Part-Time	125	114	105	110	114
TOTAL	3,853	3,633	3,404	3,801	3,904
% Change	-0.7%	-5.7%	-6.3%	11.7%	27.2%
	2010	2011	2012	2013	2014
PROGRAM AREA					
01 Instruction	586	559	481	399	398
04 Primary Support (academic computing, academic administration)	330	317	428	562	578
05 Libraries	176	160	135	147	143
06 Student Services	829	781	682	826	850
08 Institutional Support (administrative functions)	792	741	665	724	746
09 Plant Operations	967	915	855	986	1,025
Other Including SBCTC-IT and SBCTC	173	160	158	156	164
TOTAL	3,853	3,633	3,404	3,801	3,904

Source: SBCTC PMIS Database.

Note: Totals may not add to 100 percent due to rounding.

**CLASSIFIED STAFF FTES
STATE SUPPORTED
FALL 2014**

PROGRAM ASSIGNMENT

	Instruction 01	Primary Support 04	Libraries 05	Student Services 06	Instruction Support 08	Plant Operations 09	Fed	Other Codes	Total FTE
Bates	6	14	2	14	16	25	2	0	79
Bellevue	17	13	7	60	28	46	2	6	180
Bellingham	3	11	4	15	10	22	5	0	70
Big Bend	5	6	4	7	13	22	0	0	57
Cascadia	6	8	0	11	7	0	0	0	33
Centralia	2	13	1	14	10	17	4	1	63
Clark	38	40	8	69	36	54	0	4	249
Clover Park	3	23	4	24	20	35	0	0	108
Columbia Basin	14	8	3	18	29	37	1	3	111
Edmonds	9	23	7	38	41	41	0	1	159
Everett	32	20	10	37	33	44	0	4	179
Grays Harbor	2	7	2	9	12	12	0	0	44
Green River	16	31	5	33	33	32	0	7	158
Highline	18	8	6	14	25	35	0	6	112
Lake Washington	13	12	3	20	20	16	3	3	89
Lower Columbia	5	21	2	13	15	19	0	0	75
Olympic	8	26	5	32	24	28	1	8	132
Peninsula	2	5	3	9	12	13	0	0	44
Pierce District	1	4	3	4	30	4	0	0	46
Pierce Fort Steilacoom	11	11	3	45	6	28	0	3	107
Pierce Puyallup	6	5	4	25	5	20	0	0	65
Renton	7	8	2	14	20	27	0	0	79
Seattle District	0	0	1	0	27	0	0	0	28
Seattle Central	20	23	5	32	24	48	0	5	157
Seattle North	13	26	4	16	9	35	0	4	108
Seattle South	10	23	3	20	14	35	1	2	108
Seattle Voc Institute	3	2	0	3	2	3	0	0	13

CLASSIFIED STAFF FTES STATE SUPPORTED (cont)

	Instruction 01	Primary Support 04	Libraries 05	Student Services 06	Instruction Support 08	Plant Operations 09	Fed	Other Codes	Total FTE
Shoreline	13	24	6	45	22	21	5	8	145
Skagit Valley	10	15	3	28	20	32	9	0	117
South Puget Sound	17	15	4	23	21	38	0	2	118
Spokane District	1	8	3	2	46	32	1	3	94
Spokane	24	35	4	45	8	37	7	1	159
Spokane Falls*	14	24	3	34	5	37	1	0	118
Tacoma	18	13	3	19	22	33	2	6	116
Walla Walla	5	24	4	14	25	23	0	0	94
Wenatchee Valley	5	7	5	10	19	25	1	3	74
Whatcom	5	10	4	14	18	20	0	3	74
Yakima Valley	17	15	4	19	20	33	0	2	110
SBCTC	0	0	0	0	0	0	0	33	33
SYSTEM TOTAL	398	578	143	850	746	1,025	45	119	3,904

Source: SBCTC data warehouse.

Note: Totals may not add to 100 percent due to rounding.

**Administrative Staff FTE State-Supported
Fall 2010 through Fall 2014**

ADMINISTRATIVE STAFF FTE

	2010	2011	2012	2013	2014
EMPLOYMENT STATUS					
Full-Time	709	689	705	764	777
Part-Time	4	7	10	13	14
TOTAL	713	696	715	777	791
% Change	-2.4%	-2.3%	2.8%	8.6%	14.9%
PROGRAM AREA					
01 Instruction	105	109	64	45	43
04 Primary Support (academic computing, academic administration)	103	101	146	172	179
05 Libraries	22	22	20	20	21
06 Student Services	189	177	170	180	193
08 Institutional Support (administrative functions)	250	242	264	294	290
09 Plant Operations	28	28	29	37	36
Other Including SBCTC-IT and SBCTC	17	17	22	28	28
TOTAL	713	696	715	777	791

Source: SBCTC PMIS Database. Note: Totals may not add to 100 percent due to rounding.

**Professional-Technical Staff FTE State-Supported
Fall 2010 through Fall 2014**

PROFESSIONAL/TECHNICAL STAFF FTE

	2010	2011	2012	2013	2014
EMPLOYMENT STATUS					
Full-Time	1,160	1,094	1,085	1,228	1,338
Part-Time	34	35	34	34	38
TOTAL	1,194	1,129	1,119	1,262	1,375
% Change	-0.5%	-5.5%	-0.9%	12.8%	21.5%
	2010	2011	2012	2013	2014
PROGRAM AREA					
01 Instruction	220	204	189	167	194
04 Primary Support (academic computing, academic administration)	97	83	104	138	163
05 Libraries	16	13	11	16	15
06 Student Services	280	283	255	304	320
08 Institutional Support (administrative functions)	387	375	375	432	451
09 Plant Operations	37	38	38	44	48
Other *	158	133	146	161	184
TOTAL	1,194	1,129	1,119	1,262	1,375

Source: SBCTC PMIS Database.

Note: Totals may not add to 100 percent due to rounding.

*Other program area includes federal vocational, community service and SBCTC staff not coded to another program area.

**ADMINISTRATIVE AND PROFESSIONAL/TECHNICAL STAFF FTES
STATE SUPPORTED
FALL 2014**

	Administrative FTE	Professional/ Technical FTE	Total Administrative and Prof/Tech FTE
Bates	10	11	21
Bellevue	36	140	176
Bellingham	20	35	55
Big Bend	14	30	44
Cascadia	17	21	38
Centralia	35	31	66
Clark	40	36	75
Clover Park	12	15	27
Columbia Basin	24	48	72
Edmonds	35	61	96
Everett	37	24	60
Grays Harbor	8	17	25
Green River	23	69	92
Highline	24	59	83
Lake Washington	10	0	10
Lower Columbia	16	37	53
Olympic	29	29	58
Peninsula	18	31	49
Pierce District	10	17	27
Pierce Fort Steilacoom	9	14	23
Pierce Puyallup	6	9	15
Renton	26	20	47
Seattle District	8	29	37
Seattle Central	25	32	57
Seattle North	23	38	61
Seattle South	31	31	62
Seattle Voc Institute	2	6	9
Shoreline	30	18	49
Skagit Valley	25	31	56
South Puget Sound	10	48	58
Spokane District	20	26	46
Spokane	19	32	51
Spokane Falls	14	17	31
Tacoma	26	65	91
Walla Walla	22	54	76
Wenatchee Valley	13	29	42
Whatcom	31	23	54
Yakima Valley	20	32	52
SBCTC	12	112	123
SYSTEM TOTAL	791	1,375	2,166

Source: SBCTC PMIS Database.
Totals may not add to 100 percent due to rounding.