

Creating a SQL Server Linked Server (using Minisoft Connection String Generator)

Table of Contents

- Overview
- Prerequisites
- Creating a SQL Linked Server
- Testing the Linked Server
- Document References

Overview

The Minisoft OLE DB/ODBC Connection String Generator can be used to either generate the initial connection string used in the setup of a SQL Linked Server, or to verify connectivity between SQL Server and the Eloquence Server instance on the HP/UX Server taking SQL out of the equation.

This document will illustrate how to create a Linked Server within SQL Server using an existing connection string created using the Minisoft OLE DB/ODBC Connection String Generator. The steps will work for either SQL 2005 or SQL 2008.

Prerequisites

Microsoft SQL Server Management Studio (SSMS) is installed on the server you will be setting up the Linked Server connection on.

Before using the Minisoft OLE DB/ODBC Connection String Generator, the college must have installed and configured the Minisoft OLE DB Client, version 3.2, on the database server at the college.

Please refer to the document **Minisoft OLE DB Client Install** document for instructions on how to:

1. Installing the OLE DB Client drivers.
2. Running the Minisoft OLE DB/ODBC Connection String Generator in order to populate the Provider string field within the Linked Server.
3. Setting the Allow Inprocess for the OLE DB Data Provider to work properly.

Creating a SQL Linked Server

1. Within SQL's SSMS, expand the Server object and then expand the Server Objects object.

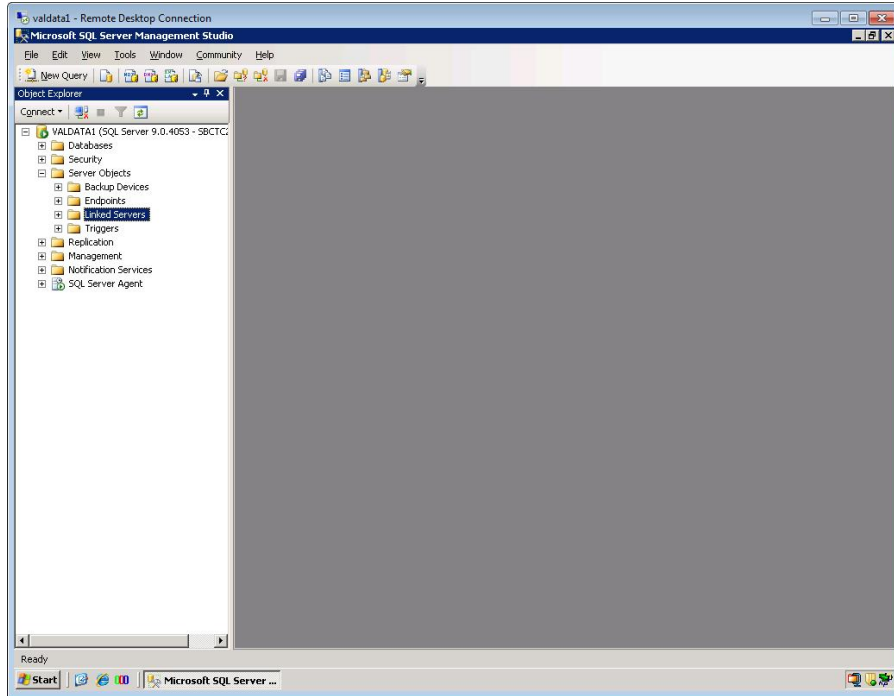


Figure 1

2. Right click Linked Servers. Click the New Linked Server... option.

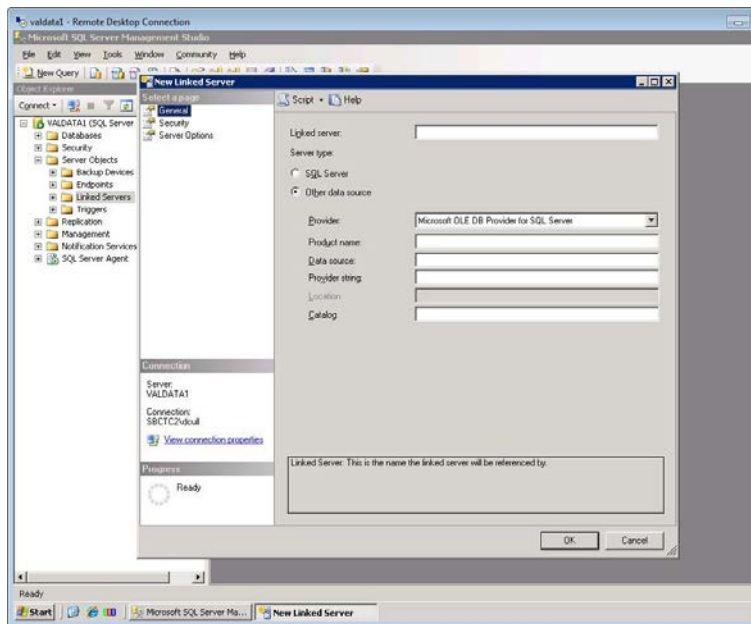


Figure 2

3. Fill in the Linked Server fields as follows:
 - a. Name the Linked Server according to your naming standards.
 - b. In the Provider dropdown menu, click Minisoft OLE DB Provider for Image/Eloquence.
 - c. In the Product name field, type **HP3KProvider**.
 - d. In the Data source field, type the IP of the HP-UX server, for example, **172.19.2.59**.
 - e. In the Provider string field, copy and paste the connection string created through the Minisoft OLE DB/ODBC Connection String Generator.

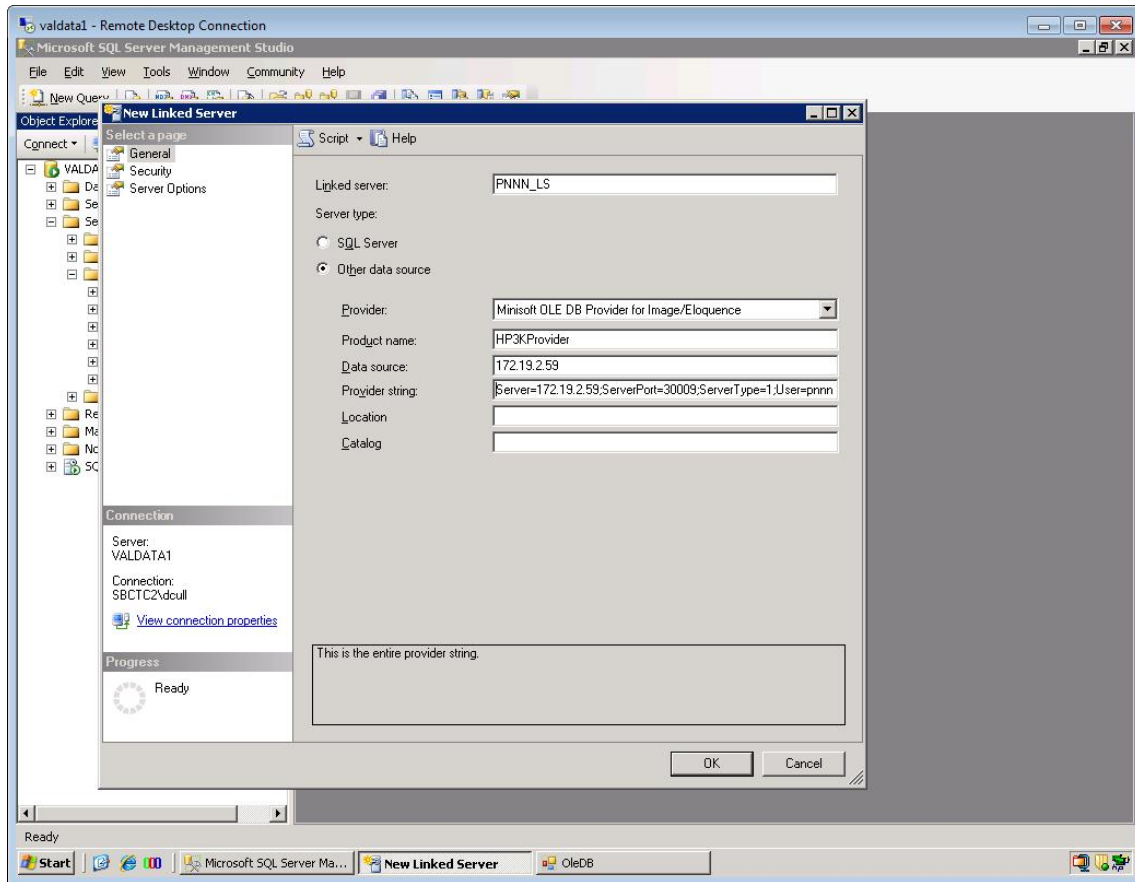


Figure 3

- Note: For instructions on using the utility and generating the string, go to **DSA-E Connection String Generator** document.

5. In the left pane, click Server Options.

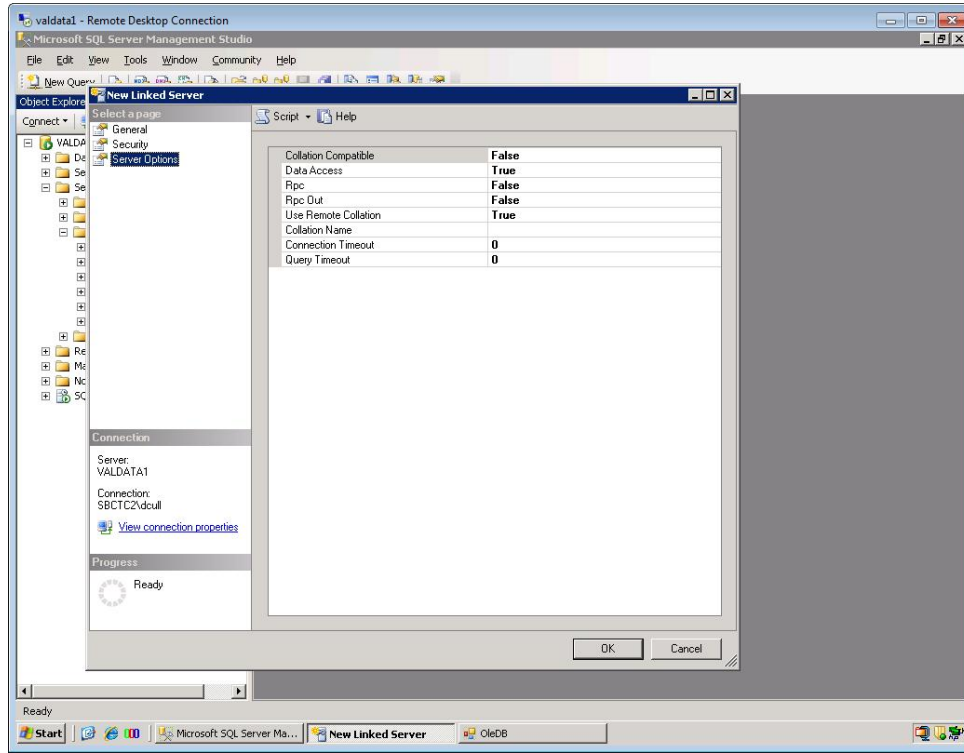


Figure 4

6. In the left pane, click Server Options.

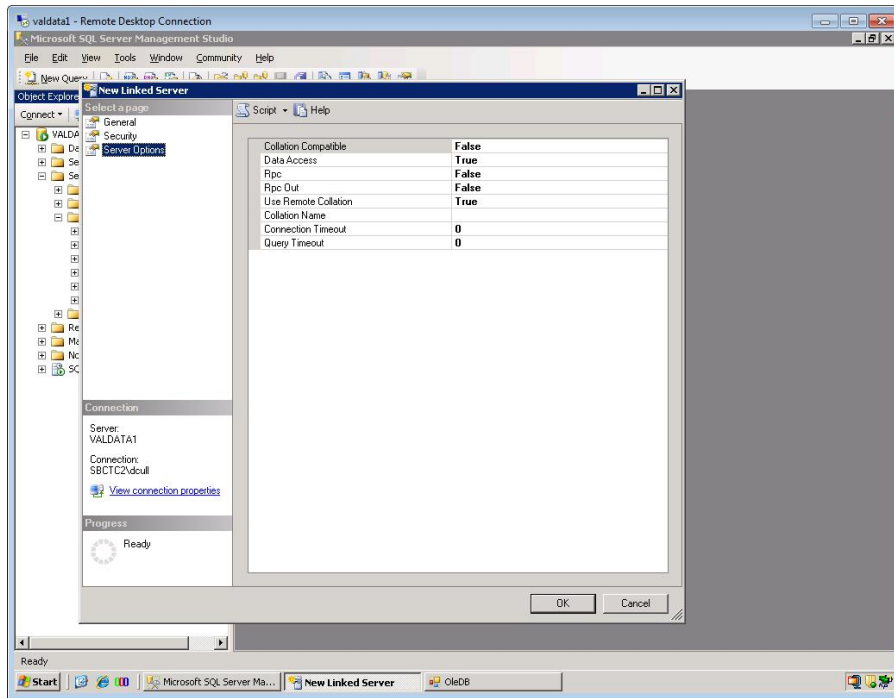


Figure 5

7. Change the Rpc Out value to True.

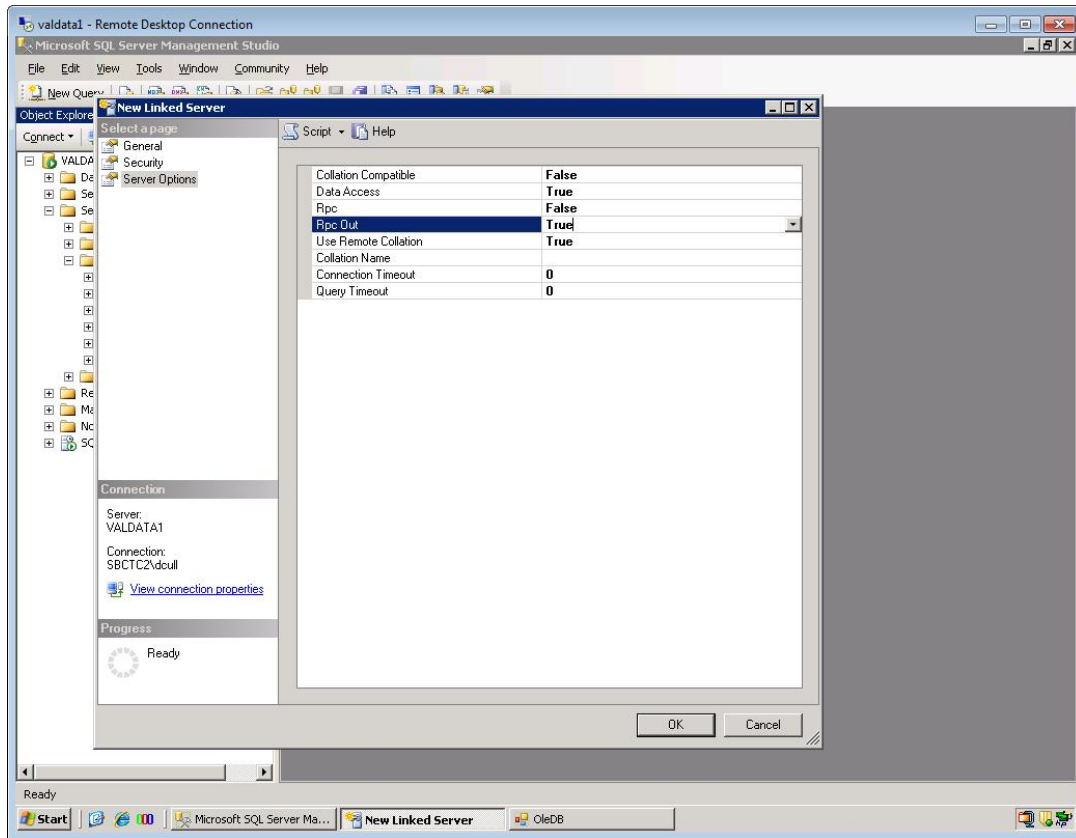


Figure 6

8. Click the OK button to save the Linked Server. The connection is automatically tested as part of the save process.

Testing the Linked Server

There are two ways to test the Linked Server after the initial creation, as follows.

Using T-SQL syntax

1. EXEC sp_testlinkedserver <Linked Server Name> -- minus <>

Using SSMS

1. Navigate to Server Objects in SSMS – Linked Servers.
2. Right click the Linked Server object name and click Test Connection.

Document References

SBCTC DSA-E Minisoft OLE DB Client	Minisoft OLE DB Client Install
SBCTC DSA-E Connection String Generator	DSA-E Connection String Generator