

FMS Implementation Notes

January 30, 2009

Contents

- [General Instruction and Information](#)
 - [General FMS Updates](#)
 - [BM1001 – Fee Code Table](#)
 - [ZX0060 – State Agency Table](#)
 - [BM3002 – AP Invoice Screen](#)
 - [BA1001 – Budget Update Screen](#)
 - [BA1005 – Budget Status Screen](#)
 - [MM5002 – Buildings and Improvements Other than Buildings Screen](#)
 - [Contacting SBCTC-ITD for Help](#)
-

General Instructions and Information

The following information pertains to the General Implementation effective January 30, 2009.

All jobs scheduling documentation is accessed through the SBCTC-ITD job Scheduling Index at <https://jobdoc.sbctc.edu>.

General FMS Updates

BM1001 – Fee Code Table

Added edits to allow only SBCTC-ITD to add the specified special characters used for fee codes associated with tuition charges generated by the fee calculation process. The new error message “BM10010050: Character is reserved in 1st position” will display if a college attempts to add any of the reserved special characters.

ZX0060 - State Agency Table

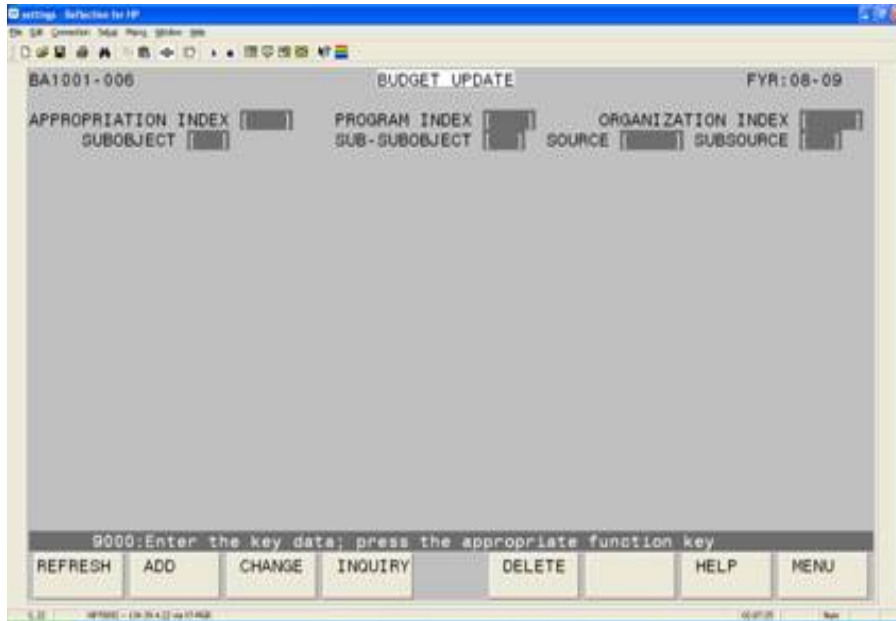
The access level of this table is now inquiry only for the colleges.

BM3002 - AP Invoice Screen

Changed the display of invoices to begin with the most recent invoice number and end with the oldest.

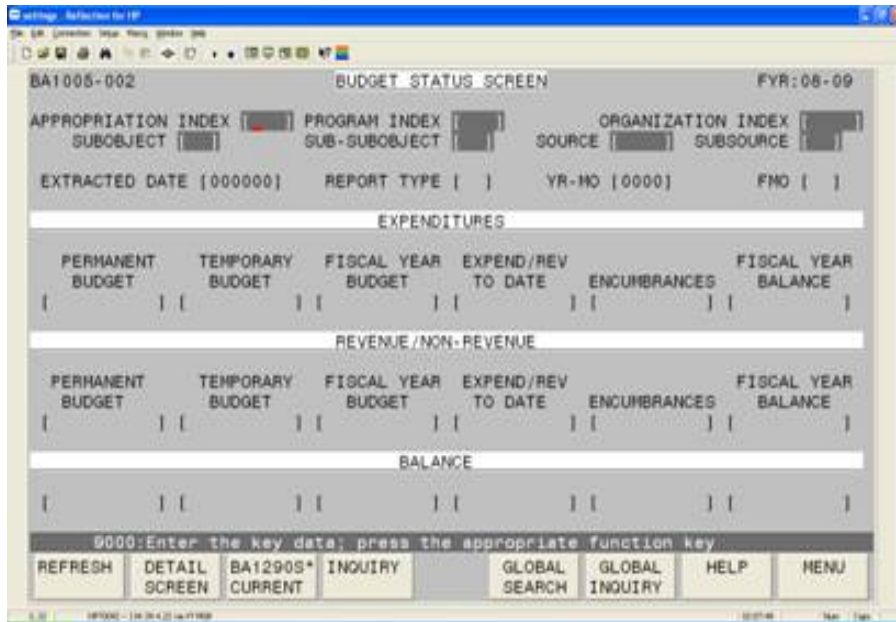
BA1001- Budget Update Screen

Changed the display order of the first three fields on the screen to be consistent with the chart of account structure. Appropriation Index, Program Index and Organization Index.



BA1005 - Budget Status Screen

Changed the display order of the first three fields on the screen to be consistent with the chart of account structure. Appropriation Index, Program Index and Organization Index.



MM5002 – Buildings and Improvements Other Than Buildings

Corrected the functionality of the TOTAL CAPITAL INVESTMENT field to display the correct amount and to update the database with the correct amount.

Contacting SBCTC-ITD for Help

If you have any questions or concerns, call Linda Stokes at (425) 803-9755.